



Catalogue

2023

Dear Inquirer,

You are holding the Product List of BIOLAB Inc., the leading Hungarian manufacturer and distributor of microbiological products. As a result of our continuous development of the last 25 years you can find more than 800 kinds of microbiological products on the following pages including plastic disposables, antimicrobial susceptibility discs, culture media, raw materials and supplements. We do hope that many of our products will be of your interest and meet your requirements.

Our products are manufactured under ISO 9001:2015 quality assurance system. Our products under effect of directive 2017/746/EC are CE marked.

Budapest, 2023

Certificate

Standard **ISO 9001:2015**

Certificate Registr. No. **01 100 1824126**

Certificate Holder: **BIOLAB Zrt.**
Öv u. 43.
1141 Budapest
Hungary

Scope: production and distribution of microbiological culture media and microbiological plastic disposables.

Proof has been furnished by means of an audit that the requirements of ISO 9001:2015 are met.

Validity: The certificate is valid from 11.06.2021 until 10.06.2024.

11.06.2021



TÜV Rheinland Cert GmbH
Am Grauen Stein · 51105 Köln

CONTENT

| | | |
|------------|---|-----------|
| I | RAW MATERIALS | 1 |
| II | CULTURE MEDIA | 5 |
| | CHROMOGENIC AND FLUOROGENIC MEDIA | 7 |
| | CULTURE MEDIA FOR | |
| | • Clinical microbiology | 7 |
| | • Genetic studies | 10 |
| | • Water microbiology | 10 |
| | • Food microbiology | 11 |
| | • Cosmetic microbiology | 13 |
| | MEDIA ACCORDING TO PHARMACOPOEIA | 13 |
| | • Antibiotic assay media | 13 |
| | • PharmaBio® | 13 |
| | • For the method of the PH EUR | 14 |
| | • For the harmonised method | 14 |
| | • For the method of USP | 14 |
| III | ANTIMICROBIAL SUSCEPTIBILITY DISCS | 17 |
| IV | PLASTIC DISPOSABLES | 25 |
| V | SUPPLEMENTS | 35 |
| | ALPHABETICAL LIST OF MEDIA | 41 |



**I. RAW
MATERIALS**

I. RAW MATERIALS

RAW MATERIALS

BIOLOGICAL SUBSTANCES

| Product | Package | Code | Package | Code |
|-------------------------------|---------|----------|---------|----------|
| Bacteriological Agar (Powder) | 500 g | BAA10500 | 1000 g | BAA11000 |
| Bacteriological Bile | 100 g | BBI10100 | 500 g | BBI10500 |
| Bacteriological Peptone | 500 g | BAP10500 | 1000 g | BAP11000 |
| Beef extract | 500 g | BEE10500 | 1000 g | BEE11000 |
| Casein Peptone | 500 g | CAP10500 | 1000 g | CAP11000 |
| Gelatine Peptone | 500 g | GEP10500 | 1000 g | GEP11000 |
| Meat Peptone | 500 g | MPE10500 | 1000 g | MPE11000 |
| Mycological Peptone | 500 g | FUP10500 | 1000 g | FUP11000 |
| Proteose Peptone | 500 g | PRP10500 | 1000 g | PRP11000 |
| Soya Peptone | 500 g | SOP10500 | 1000 g | SOP11000 |
| Tryptone | 500 g | TRP10500 | 1000 g | TRP11000 |
| Tryptose | 500 g | TRY10500 | 1000 g | TRY11000 |
| Brain-Heart Infusion | 100 g | BRH10100 | 500 g | BRH10500 |
| Liver Extract | 100 g | LIE10100 | 500 g | LIE10500 |
| Malt Extract | 500 g | MAE10500 | 1000 g | MAE11000 |
| Meat Extract | 500 g | MEE10500 | 1000 g | MEE11000 |
| Yeast Extract | 500 g | YEE10500 | 1000 g | YEE11000 |
| Bile Salt No.3 | 100 g | BBS10100 | 500 g | BBS10500 |

FINE CHEMICALS

| Product | Package | Code | Package | Code |
|--------------------|---------|----------|---------|----------|
| Brilliant Green | 5 g | BRG10005 | 25 g | BRG10025 |
| Bromocresol Purple | 25 g | BCP10025 | 100 g | BCP10100 |
| Cholramphenicol | 5 g | CHL10005 | 25 g | CHL10025 |
| Crystal Violet | 5 g | CRV10005 | 25g | CRV10025 |
| Gentamycin | 1 g | GEN10001 | 5 g | GEN10005 |
| Glucose, anhydrous | 500 g | DEH10500 | 1000 g | DEH11000 |
| Glucose, 1-hydrate | 500 g | DEX10500 | 1000 g | DEX11000 |
| Hemin | 1 g | HAE10001 | 5 g | HAE10005 |
| Kanamycin | 5 g | KAN10005 | 25 g | KAN10025 |
| Lactose | 500 g | LAC10500 | 1000 g | LAC11000 |
| L-Arginine HCl | 25 g | LAH10025 | 100 g | LAH10100 |
| L-Cysteine HCl | 25 g | LCE10025 | 100 g | LCE10100 |
| L-Cystine | 25 g | LCI10025 | 100 g | LCI10100 |
| L-Lysine HCl | 25 g | LLH10025 | 100 g | LLH10100 |
| L-Ornithine HCl | 25 g | LOH10025 | 100 g | LOH10100 |
| NAD | 1 g | NAD10001 | 5 g | NAD10005 |
| Nalidixacid | 5 g | NLA10005 | 25 g | NLA10025 |
| Phenol Red | 25 g | PHR10025 | 100 g | PHR10100 |
| Safranin | 25 g | SFR10025 | 100 g | SFR10100 |
| Saccharose | 500 g | SUC10500 | 1000 g | SUC11000 |



CULTURE MEDIA

CHROMOGENIC AND FLUOROGENIC MEDIA

CHROMOGENIC MEDIA

| | | |
|---|--|-----|
| ChromoBio® Candida | Chromobio® MLGA | |
| ChromoBio® Cereus (agar base + supplement) KIT | ChromoBio® MRSA (agar base + supplement) KIT | |
| ChromoBio® Coliform | ChromoBio® Salmonella Base | |
| ChromoBio® Enterococcus Agar | ChromoBio® Salmonella Plus Base | |
| ChromoBio® Enterococcus Broth | ChromoBio® Staphylococcus | NEW |
| ChromoBio® ESBL | ChromoBio® StrepB | |
| ChromoBio® Listeria (agar base + supplement) KIT | ChromoBio® TBX | |
| ChromoBio® Listeria Plus (agar base + supplement) KIT | ChromoBio® UTI | |
| ChromoBio® LMX | ChromoBio® VRE | NEW |
| ChromoBio® M-CP Base | | |

FLUROGENIC MEDIA

| | |
|-----------------|----------------------------|
| FluoroBio® BGLB | FluoroBio® LSB |
| FluoroBio® CLED | FluoroBio® MacConkey Agar |
| FluoroBio® EC | FluoroBio® MacConkey Broth |
| FluoroBio® ECD | FluoroBio® VRBL |

MEDIA FOR CLINICAL MICROBIOLOGY

BASIC MEDIA

| | |
|---|---|
| Anaerobe Isolation Agar | GC Agar (agar base+supplement) KIT |
| Bacteroides Bile Esculin Agar | Haemophilus Test Agar Base |
| Blood Agar Base | Loeffler Medium Base |
| Blood Agar Base No.2 | Nutrient Agar |
| Brain Heart Infusion Agar | Phenylethyl Alcohol (PEA) Agar (agar base+supplement) KIT |
| Brucella Agar Base + Hemin+ Vitamin K | Schaedler Agar |
| Charcoal Agar Base | Strain Agar |
| Chocolate Agar (agar base+supplement) KIT | Trichomonas (CPLM) Medium Base, Modified |
| Columbia Blood Agar Base | Trichomonas Medium Base |
| Columbia CNA Agar Base | Tryptone Soya Agar, PH EUR - USP |
| GBS Agar Base | Wilkins-Chalgren Agar |

BASIC ENRICHMENT MEDIA

| | | |
|----------------------------------|---|-----|
| Anaerobe Isolation Broth | Thioglycollate Medium, Brewer | |
| Brain Heart Infusion Broth | Thioglycollate Medium G | |
| Clausen Medium Base | Thioglycollate Medium, PH EUR | |
| CM Broth for Aerobe Enrichment | Thioglycollate Medium with Hemin + Vitamin K3 | |
| CM Broth for Anaerobe Enrichment | Todd-Hewitt Broth | |
| Dextrose Broth | Todd-Hewitt Broth, Selective | |
| Meat Extract Broth | Tryptone Soya Broth, PH EUR – USP | NEW |
| Mueller-Hinton II Broth | Tryptone Soya Bile (mTSB) Broth | NEW |
| Mycoplasma (PPLO) Broth Base | Tryptone Soya Bile (mTSB+n) Broth with Novobiocin | |
| Nutrient Broth | Tryptose Phosphate Broth | |
| Nutrient Broth No.2 | Wilkins-Chalgren Broth | |
| Schaedler Broth | | |

II. CULTURE MEDIA

ANTIMICROBIAL SUSCEPTIBILITY TESTING AGARS

| | | |
|----------------------------------|--|-----|
| Diagnostic Sensitivity Test Agar | Mueller-Hinton II Agar, Methylene Blue | NEW |
| Mueller-Hinton II Agar | RPMI MOPS Agar Base | |
| Mueller-Hinton Agar, Fungi | Wilkins-Chalgren Agar | |

SELECTIVE AND/OR DIFFERENTIAL MEDIA

| | | |
|--|--|-----|
| Burkholderia (BCSA) Agar | MacConkey Agar No.3 | |
| ChromoBio [®] MRSA (agar base + supplement) KIT | MacConkey Agar Base, Sorbitol | |
| ChromoBio [®] Staphylococcus | MacConkey Agar without Crystal Violet | |
| ChromoBio [®] Urine | MacConkey Agar without Salt | |
| CLED Agar | MacConkey Agar without Salt and Crystal Violet | NEW |
| CLED Agar with Andrade Indicator | MacConkey Broth PH, EUR-USP | |
| Eosin Methylene Blue Agar, USP | Mannitol Salt Agar, PH EUR - USP | |
| Eosin Methylene Blue Lactose Sucrose Agar | MRSA Screen Agar Base | |
| Ethyl Violet Azide (EVA) Broth | Mycoplasma (PPL0) Agar Base | |
| NEW FluoroBio [®] CLED | Pike Broth | |
| NEW Herrold's Agar Base | Purple Lactose Agar Base, Modified | |
| Legionella (CYE) Agar Base | Salt (7%) Agar | |
| Lowenstein-Jensen Medium Base | Staphylococcus Agar No.110 | |
| NEW MacConkey Agar | Tributyryn Agar Base | NEW |

BIOCHEMICAL MEDIA

| | | |
|---|--|-----|
| Acetamide Broth | Motility Indole Lysine (MIL) Medium | |
| Acetate Differential Agar | Motility Indole Urea (MIU) Medium (medium base+urea) KIT | NEW |
| Arginine Broth | Motility Nitrate (MN) Medium Base | |
| DNase Agar | Motility Medium | |
| DNase Agar with Mannitol | MRVP Broth | |
| DNase Agar with Methyl Green | Nitrate Broth | |
| DNase Agar with Tolidine Blue | Phenylalanine Agar | |
| Esculin Agar | Phenylalanine Rhamnose (FARH) Agar | |
| Esculin Broth | Russel Agar | |
| Indole Motility Ornithine (IMO) Medium | Salt Broth | |
| King A Agar Base, USP | SIM Medium | |
| King B Agar, USP (agar base + supplement) KIT | Simmons Citrate Agar | |
| Kligler Iron Agar | Triple Sugar Iron (TSI) Agar, PH EUR | |
| Koser Citrate Broth | Tryptone Water | |
| Lysine Iron (LIA) Agar | Urea Agar (agar base + supplement) KIT | |
| Malonate Agar | Urea Broth (broth base + supplement) KIT | |
| Malonate Broth | Urea Indole Broth (broth base + supplement) KIT | |
| Mannitol Motility Nitrate (MMN) Medium | | |

MEDIA FOR SUBSTRATE DECOMPOSITION STUDIES

FOR CARBOHYDRATE SUBSTRATES:

| | |
|----------------------------------|--------------------------|
| Hugh-Leifson OF Medium Base | Peptone Water + BCP Base |
| Parisian Mannitol Medium | Phenol Red Agar Base |
| Peptone Water Base | Phenol Red Broth Base |
| NEW Peptone Water + Andrade Base | |

II. CULTURE MEDIA

LIST OF SUGARS AND THEIR SUPPLEMENTARY CODES:

| | | | |
|---------------|---------------|------------------|---------------|
| Adonitol -01 | Glycerine -07 | meso-Inosite -13 | Trehalose -19 |
| Arabinose -02 | Inulin -08 | Na-tartarate -14 | Xylose -20 |
| Dulcitol -03 | Starch -09 | Rhamnose -15 | SLS -21 |
| Fructose -04 | Lactose -10 | Sucrose -16 | |
| Galactose -05 | Maltose -11 | Salicin -17 | |
| Glucose -06 | Mannitol -12 | Sorbitol -18 | |

Please choose the required sugar from the list above!

FOR AMINO ACID SUBSTRATES:

| | |
|--------------------|-------------------|
| Falkow Broth Base | Taylor Broth Base |
| Moeller Broth Base | |

SUBSTRATES:

| | | |
|----------|--------|-----------|
| Arginine | Lysine | Ornithine |
|----------|--------|-----------|

Please choose the required substrate from the list above!

BLOOD CULTURES

| Product | Package | Code |
|---|---------|----------|
| Aerobe Blood Culture | 60 ml | AEH30060 |
| Anaerobe Blood Culture | 60 ml | ANH30060 |
| Aerobe Blood Culture (pediatric mini) | 30 ml | AEH30030 |
| Anaerobe Blood Culture (pediatric mini) | 30 ml | ANH30030 |

MYCOLOGICAL MEDIA

| | | |
|---|---|-----|
| NEW ChromoBio® Candida | Sabouraud Chloramphenicol Gentamicin Tetrazolium Agar | NEW |
| DTM Agar Base | Sabouraud Dextrose (2%) Agar | |
| Kimmig Agar Base | Sabouraud Dextrose Broth, PH EUR - USP | |
| Sabouraud Chloramphenicol Actidion Agar | Sabouraud Dextrose (4%) Chloramphenicol Gentamicin Agar | |
| Sabouraud Chloramphenicol Agar | Sabouraud Dextrose (1%) Maltose (1%) Agar | |
| Sabouraud Chloramphenicol Agar, PH EUR | Sabouraud Dextrose (4%) Agar, PH EUR – USP | |
| Sabouraud Chloramphenicol Broth | Sabouraud Maltose (4%) Agar | |
| Sabouraud Chloramphenicol Gentamicin Agar | | |

MEDIA FOR ENTERIC PATHOGENS

| | | |
|---|---|-----|
| BAGG Broth Base | Peptone Water, Alkaline | |
| NEW Bismuth Sulphite Agar (agar base+indicator) KIT | Rhodanide Broth | NEW |
| Bolton Broth Base | Russel Agar | NEW |
| Brilliant Green Agar Base, Human | Salmonella Shigella (SS) Agar | |
| Campylobacter Agar Base | Selenite Broth (broth base+supplement) KIT | |
| Campylobacter Agar Base, Karmali | Selenite Cystine Broth, USP (broth base+supplement) KIT | |
| Campylobacter Blood-free (CCDA) Agar Base | Selenite Cystine Mannitol Broth (broth base+supplement) KIT | |
| Clostridium Difficile Agar Base | Shigella Broth Base | NEW |
| Clostridium Difficile (CCFA) Agar Base | Sven-Gard Medium | NEW |
| NEW Deoxycholate Citrate Agar | TCBS Agar | |
| Deoxycholate Citrate Agar, Hynes | TSI Agar, PH EUR | NEW |
| Deoxycholate Citrate Agar, Leifson | Tetrathionate Broth Base, USP | |
| GN Broth | XLD Agar, PH EUR – USP | |
| Hektoen Enteric Agar | Yersinia Agar Base | |
| KF Streptococcus Agar Base | Yersinia Broth Base | |
| Önöz Agar | Yersinia (ITC) Broth (broth base+supplements) | |

II. CULTURE MEDIA

REAGENTS AND STAINS

REAGENTS

| Product | Package | Code | |
|--|----------|----------|----------------------|
| Acid Phosphatase Reagent | 10 ml | APR60010 | Shelf life: 2 weeks! |
| Bile Solubility Reagent | 10 ml | BSR60010 | |
| Griess-Ilosvay Reagent | 2x50 ml | GIR60100 | |
| Kovac's Indole Reagent | 100 ml | KIR60100 | |
| Methyl Red Reagent | 100 ml | MRR60100 | |
| Nessler Reagent | 10 ml | NSR60010 | |
| ONPG Reagent | 100 ml | ONP60100 | |
| Oxidase Reagent | 100 ml | OXI60100 | |
| Phenylalanine Deaminase Reagent (PAD I-II) | 2x100 ml | PAD60200 | |
| Rapid Urease Reagent | 100+5 ml | RUR60105 | |
| Rapid Voges-Proskauer Reagent | 3x50 ml | RVP60150 | |

STAINS

| Product | Package | Code | |
|---------------------------------|-------------|----------|--|
| Giemsa Stain Set | 1060 ml | GIE61060 | |
| Gram Stain Set | 4 x 250 ml | GPK61000 | |
| Gram Stain Set | 4 x 1000 ml | GPK64000 | |
| Kinyoun Stain Set | 3x100 ml | KIS60300 | |
| Loeffler's Methylene Blue Stain | 1000 ml | LME61000 | |
| May-Grünwald Stain | 1000 ml | MAG61000 | |
| Ziehl-Neelsen Stain Set | 300 ml | ZNK60300 | |

MEDIA FOR GENETIC STUDIES

| | |
|---------------------|------------|
| Luria-Bertani Broth | Luria Agar |
|---------------------|------------|

MEDIA FOR WATER MICROBIOLOGY

MICROTITER PLATE MEDIA

| Product | Package | Code | |
|----------------------------|---------|-------------|--|
| MUG/EC Medium | plate | MUG80096 | |
| MUD/SF Medium | plate | MUD80096 | |
| MUG/EC Medium Plus | plate | MUG80096-WH | |
| MUD/SF Medium Plus | plate | MUD80096-WH | |
| Artificial Sea Water | 100 ml | SIS30100 | |
| Artificial Sea Water + BPB | 100 ml | SIB30100 | |

II. CULTURE MEDIA

LIQUID MEDIA

| | | |
|--------------------------------------|---|-----|
| A-1 Broth Base | Linden-Grain Broth | |
| Acetamide Broth | M-FC Broth | |
| Asparagine Broth Base | M-Green Broth | |
| Bile Esculin Azide Broth | Maximum Recovery Diluent | |
| Bile Esculin Broth | Meat Extract Broth | NEW |
| Brilliant Green Bile (2%) Broth | Nutrient Broth | NEW |
| Bromocresol Purple Azide Broth Base | Nutrient Broth No. 2 | NEW |
| NEW ChromoBio® Enterococcus Broth | Nutrient Broth, DEV | |
| NEW ChromoBio® LMX Endo M Broth Base | Plate Count Broth | |
| NEW FluoroBio® BGLB | R2A Broth | |
| Glutamate Broth Base, Modified | Selenite Broth (broth base+supplement) KIT | |
| Lactose Broth, PH EUR | Selenite Cystine Mannitol Broth (broth base+supplement) KIT | |
| Lactose Peptone Broth, DEV | Selenite Cystine Broth, USP (broth base+supplement) KIT | |
| Lactose (1%) Phenol Red Broth | Tryptophan Broth | |

SOLID MEDIA

| | | |
|---|----------------------------------|-----|
| Aeromonas Agar Base | Legionella (CYE) Agar Base | |
| BAT Agar | M-FC Agar | |
| NEW Bile Esculin Agar | M-Green Agar | |
| Bile Esculin Azide Agar | M-PA-B Agar | |
| Blood Agar Base | M-PA-C Agar | |
| Brilliant Green (BPLS) Agar, PH EUR | Nutrient Agar | |
| ChromoBio® Coliform | Nutrient Agar, DEV | |
| NEW ChromoBio® Enterococcus agar | Nutrient Agar, ISO | |
| ChromoBio® M-CP alap | Nutrient Agar, ISO 16266 | |
| NEW Deoxycholate Citrate Agar | Nutrient Gelatine Medium | |
| Deoxycholate Citrate Agar, Hynes | Plate Count Agar | |
| Deoxycholate Citrate Agar, Leifson | Plate Count Agar, ISO 6222 | |
| Deoxycholate Lactose Agar | R2A Agar, PH EUR | |
| Endo Agar (agar base+supplement) KIT | Salt Blood Agar | NEW |
| Endo Agar, DEV (agar base+supplement) KIT | Slanetz-Bartley Agar Base | |
| Endo LES Agar (agar base+supplement) KIT | Tergitol 7 Agar Base | |
| Eosin Methylene Blue Agar, USP | Tryptone Soya Agar, PH EUR – USP | |
| Eosin Methylene Blue Lactose Sucrose Agar | Vogel-Johnson Agar Base, USP | |
| GSP Agar Base | Yeast Extract Agar | |
| K Agar Base | Wilson Agar Base | NEW |
| KF Streptococcus Agar Base | | |

MEDIA FOR FOOD MICROBIOLOGY

LIQUID MEDIA

| | | |
|-----------------------------|---|-----|
| A-1 Broth Base | Bile Esculin Broth | |
| Acetamide Broth | Blue Broth | |
| APT Broth Base | Bolton Broth Base | |
| Azide Dextrose Broth | Brilliant Green Bile (2%) Broth | |
| Azide Dextrose Broth, Rothe | Brucella Broth | |
| Baird-Parker Broth Base | Bryant-Burkey Broth (broth base+supplement) KIT | NEW |
| Bile Esculin Azide Broth | Cetrimide Broth Base | |

II. CULTURE MEDIA

LIQUID MEDIA

| | | |
|--|--|-----|
| ChromoBio® Enterococcus Broth | Malachite Green Broth Base | |
| CM Broth for Aerobe Enrichment | Malt Extract Broth | NEW |
| ChromoBio® MLGA | Maximum Recovery Diluent | |
| CM Broth for Anaerobe Enrichment | Meat Extract Broth | |
| Dextrose Tryptone Broth | Membran Lauryl Sulphate (MLSB) Broth | |
| EC Broth | MRS Broth (broth base + supplement) KIT | |
| EE Broth, PH EUR - USP | Nutrient Broth | |
| Elliker Broth | Nutrient Broth No. 2 | |
| Ethyl Violet Azide (EVA) Broth | Orange Serum Broth (broth base + supplement) KIT | |
| FluoroBio® BGLB | Peptone Water, Buffered | |
| FluoroBio® EC | Peptone Water, Double Buffered | |
| FluoroBio® LSB | Plate Count Broth | |
| FluoroBio® VRBL | Potato Dextrose Broth | |
| Giolitti-Cantoni Broth Base + TWEEN | Rappaport-Vasiliadis Broth, PH EUR - USP (broth base + supplement) KIT | |
| GN Broth | Reinforced Clostridial Differential Broth | |
| Kanamycin Esculin Azide Broth | Ringer Solution, 1/4 Strength | |
| Lactose Broth, PH EUR | Ringer-Locke Solution | NEW |
| Lactose (1%) Phenol Red Broth | Tetrathionate Broth Base, Muller-Kauffmann | |
| Lactose Sulphite Broth Base, PH EUR | Tetrathionate Broth Base, Muller-Kauffmann (MKTTn) | |
| Lauryl Sulphate Broth | Tetrathionate Broth Base, Preuss | |
| Lauryl Sulphate Mannitol Broth | Thioglycollate Agar, Brewer | NEW |
| Lethen Broth Base | Thioglycollate Agar, G | NEW |
| Listeria Enrichment Broth | Thioglycollate Agar, PH EUR | NEW |
| Listeria Enrichment Broth, Buffered | Thioglycollate Agar with Hemin and Vitamin K3 | NEW |
| Listeria Enrichment Broth Base, UVM - Fraser | Tryptone Soya Yeast Extract Broth | |
| Listeria Enrichment Broth, Fraser | Tryptone Water | |
| Listeria Enrichment Broth, Half-Fraser | Tryptophan Broth | |
| Listeria Enrichment Broth, UVM I | WL Differential Broth | |
| Listeria Enrichment Broth, UVM II | WL Nutrient Broth | |
| NEW Litsky-Mallmann Broth | Wort Broth Base | |
| Liver Broth | Yeast Malt Broth | |
| M 17 Broth | | |
| M-Green Broth | | |

SOLID MEDIA

| | |
|-------------------------------------|-----------------------------------|
| NEW ACGM Agar Base | Bromocresol Purple Glucose Agar |
| APT Agar Base | Bromocresol Purple Lactose Agar |
| Bacillus Cereus (PEMBA) Agar Base | Brucella Agar Base |
| Bacillus Cereus (PREP) Agar Base | CATC Agar Base |
| Baird-Parker Agar Base, PH EUR | Cetrimide Agar Base, PH EUR - USP |
| Baird-Parker Agar Base, ISO | Cetrimide (CN) Agar Base |
| Bile Esculin Agar | Cetrimide (CN) Agar Base No.2 |
| Bile Esculin Azide Agar | China Blue Lactose Agar |
| Blood agar Base No. 2. ISO | Chloramphenicol Glucose Agar |
| Blue Agar | ChromoBio® Cereus Kit |
| Brilliant Green Agar Base, Modified | ChromoBio® Enterococcus Agar |
| Brilliant Green (BPLS) Agar, PH EUR | ChromoBio® Listeria Kit |
| Brolac agar | ChromoBio® Listeria Plus Kit |

II. CULTURE MEDIA

SOLID MEDIA

| | | |
|-----|--|--|
| | ChromoBio® Salmonella Base | Oxytetracycline Glucose Yeast Extract Agar Base |
| | ChromoBio® Salmonella Plus Base | Perfringens (OPSP) Agar Base |
| NEW | Copper Sulfate Agar | Perfringens (TSC+SFP) Agar Base |
| | Czapek-Dox Agar | Plate Count Agar |
| | Czapek Yeast Extract Agar | Plate Count Skim Milk Agar |
| | Deoxycholate Lactose Agar | Potato Dextrose Agar, PH EUR - USP |
| | Dextrose Tryptone Agar | Pseudomonas Isolation Agar Base |
| | DG18 Agar Base | Rappaport-Vassiliadis (MSRV) Medium (medium base + supplement) KIT |
| | Diasalm Medium (medium base+supplement) KIT | |
| | Drigalski Glucose Agar | Reinforced Clostridial (RCM-DRCM) Medium Base, PH EUR - USP |
| | Drigalski Lactose Agar | Reinforced Clostridial (RCM) Agar |
| | Edwards Agar Base | Rogosa Agar (agar base + supplement) KIT |
| | FluoroBio® ECD | Rose Bengal Chloramphenicol Agar |
| | Gelatine Peptone Agar | Rose Bengal Dichloran Agar |
| NEW | GSP Agar Base | SPS Agar |
| | Hugh-Leifson OF Glucose Medium, ISO | Sugar Free Agar |
| | Iron Sulphite Agar | Test Agar, pH 6.0 |
| | Kanamycin Esculin Azide Agar | Test Agar, pH 7.2 |
| | KF Streptococcus Agar Base | Test Agar, pH 8.0 |
| | Klimmer Agar | Tomato Juice Agar |
| NEW | Kimmig Agar Base | TOS Propionate Agar Base |
| | Lactose Gelatine Medium | Tributyryn Agar Base |
| | Lethen Agar Base | Tryptone Bile Agar |
| | Leuconostoc Agar | Tryptone Soya Yeast Extract Agar |
| | Listeria Selective Agar Base, Oxford | TSN Agar |
| | Listeria Selective Agar Base, Palcam | Universal Beer Agar |
| | M 17 Agar | Violet Red Bile Glucose Agar, PH EUR |
| | Malt Extract Agar | Violet Red Bile Lactose Agar |
| | Mannitol Lysine Brilliant Green Agar | Violet Red Bile Lactose Agar, Buffered |
| | Mannitol Salt Agar | Willis-Hobbs Agar Base |
| | MEA Agar | Wilson Agar Base |
| | MRS Agar (agar base + supplement) KIT | WL Differential Agar |
| | Nutrient Agar | WL Nutrient Agar |
| | Nutrient Agar, ISO | Wort Agar Base |
| | Nutrient Agar, ISO 21528 | XLD Agar, ISO |
| | Nutrient Agar SEMISOLID | XLD Agar, PH EUR - USP |
| | Orange Serum Agar (agar base + supplement) KIT | Yeast Malt Agar |

MEDIA FOR COSMETIC MICROBIOLOGY

| | |
|------------------------|-------------------------|
| EUGON LT 100 Agar Base | EUGON LT 100 Broth Base |
| TAT Broth Base, USP | |

CULTURE MEDIA ACCORDING TO PHARMACOPOEIAS

A. PharmaBio® culture media

The PharmaBio® product range includes excellent quality culture media according to the pharmacopoeias. All these items are provided only after strict tests which are conducted according to the pharmacopoeias' requirements. Certificates of analysis contain these test results.

| | |
|--|--|
| PharmaBio® Antibiotic Assay Medium No. 1 | PharmaBio® Antibiotic Assay Medium No. 3 |
| PharmaBio® Antibiotic Assay Medium No. 2 | PharmaBio® Antibiotic Assay Medium No. 5 |

II. CULTURE MEDIA

A. PharmaBio® culture media

| | | |
|-----|---|--|
| | PharmaBio® Antibiotic Agar E | PharmaBio® King A Agar Base |
| | PharmaBio® Antibiotic Agar JP | PharmaBio® King B Agar (agar base + supplement) KIT |
| | PharmaBio® Antibiotic Assay Medium No. 8 | PharmaBio® Lactose Broth |
| | PharmaBio® Antibiotic Assay Medium No. 9 | PharmaBio® Lactose Sulphite Broth Base |
| | PharmaBio® Antibiotic Assay Medium No. 10 Base | PharmaBio® MacConkey Agar |
| | PharmaBio® Antibiotic Assay Medium No. 11 | PharmaBio® MacConkey Broth |
| | PharmaBio® Antibiotic Assay Medium No. 12 | PharmaBio® Mannitol Salt Agar |
| | PharmaBio® Antibiotic Assay Medium No. 13 | PharmaBio® Neutralising Broth Base |
| | PharmaBio® Antibiotic Assay Medium No. 19 | PharmaBio® Neutralizing Fluid Base |
| | PharmaBio® Antibiotic Assay Medium No. 24 | PharmaBio® Peptone Water, Buffered |
| | PharmaBio® Antibiotic Assay Medium No. 32 | PharmaBio® Potato Dextrose Agar |
| | PharmaBio® Antibiotic Assay Medium No. 34 Base | PharmaBio® R2A Agar |
| | PharmaBio® Antibiotic Assay Medium No. 35 Base | PharmaBio® RCM Medium |
| | PharmaBio® Antibiotic Assay Medium No. 36 | PharmaBio® Rappaport- Vassiliadis Broth (broth base+ supplement) KIT |
| NEW | PharmaBio® Antibiotic Broth No. 3 | PharmaBio® Reinforced Clostridial Medium |
| NEW | PharmaBio® Antibiotic Broth No. 13 | PharmaBio® Sabouraud Chloramphenicol Agar |
| NEW | PharmaBio® Antibiotic Broth No. 34 Base | PharmaBio® Sabouraud Dextrose (4%) Agar |
| NEW | PharmaBio® Antibiotic Broth No. 39 | PharmaBio® Sabouraud Dextrose Broth |
| | PharmaBio® Antibiotic Assay Medium No. 39 | PharmaBio® Selenite Cystine Broth (broth base+supplement) KIT |
| | PharmaBio® Baird-Parker Agar Base | PharmaBio® TAT Broth Base |
| | PharmaBio® Brilliant Green (BPLS) Agar ISO | PharmaBio® Tetrathionate Broth Base, PH EUR |
| | PharmaBio® Casein Peptone Lecithin Polysorbate Broth Base | PharmaBio® Tetrathionate Broth Base, USP |
| | PharmaBio® Cetrimide Agar Base | PharmaBio® Thioglycollate Medium |
| | PharmaBio® Columbia Agar | PharmaBio® Tryptone Soya Agar |
| | PharmaBio® Deoxycholate Citrate Agar | PharmaBio® Tryptone Soya Broth |
| | PharmaBio® EE Broth | PharmaBio® Violet Red Bile Glucose Agar, PH EUR |
| NEW | PharmaBio® Fluid A | PharmaBio® Violet Red Bile Glucose Agar, PH EUR - USP |
| NEW | PharmaBio® Fluid D Base | PharmaBio® Vogel-Johnson Agar Base |
| NEW | PharmaBio® Fluid K Base | PharmaBio® XLD Agar |
| | PharmaBio® Eosin Methylene Blue Agar | |

B. Culture media for the harmonised method

| | |
|---------------------------------------|--|
| Cetrimide Agar Base, PH EUR - USP | Rappaport-Vasiliadis Broth, PH EUR - USP (broth base + supplement) KIT |
| Columbia Agar, PH EUR - USP | Reinforced Clostridial (RCM-DRCM) Medium Base, PH EUR - USP |
| EE Broth, PH EUR - USP | Sabouraud Dextrose (4%) Agar, PH EUR - USP |
| MacConkey Agar, PH EUR - USP | Sabouraud Dextrose Broth, PH EUR - USP |
| MacConkey Broth, PH EUR - USP | Tryptone Soya Agar, PH EUR - USP |
| Mannitol Salt Agar, PH EUR - USP | Tryptone Soya Broth, PH EUR - USP |
| Peptone Water, Buffered, PH EUR - USP | Violet Red Bile Glucose Agar, PH EUR - USP |
| Potato Dextrose Agar, PH EUR - USP | XLD Agar, PH EUR - USP |

C. Culture media for the method of the European Pharmacopoeia

| | |
|-------------------------------------|--|
| Baird-Parker Agar Base, PH EUR | R2A Agar, PH EUR |
| Brilliant Green (BPLS) Agar, PH EUR | Sabouraud Chloramphenicol Agar, PH EUR |
| Deoxycholate Citrate Agar, PH EUR | Tetrathionate Broth Base, PH EUR |
| Lactose Broth, PH EUR | Thioglycollate Medium, PH EUR |
| Lactose Sulphite Broth Base, PH EUR | Triple Sugar Iron (TSI) Agar, PH EUR |
| Neutralizing Fluid Base, PH EUR | Violet Red Bile Glucose Agar, PH EUR |

D. Culture media for the method of the United States Pharmacopoeia

| | |
|---|---|
| Casein Peptone Lecithin Polysorbate Broth Base, USP | Selenite Cystine Broth, USP (broth base+supplement) KIT |
| Eosin Methylene Blue Agar, USP | TAT Broth Base, USP |
| King A Agar Base, USP | Tetrathionate Broth Base, USP |
| King B Agar, USP (agar base + supplement) KIT | Vogel-Johnson Agar Base, USP |



ANTIMICROBIAL SUSCEPTIBILITY DISCS

III. ANTIMICROBIAL SUSCEPTIBILITY DISCS

ANTIMICROBIAL SUSCEPTIBILITY DISCS

The discs conform to NCCLS standard and are manufactured under ISO 9001 quality assurance system. Discs are packed in bifunctional tubes, they can be dispensed either manually or by Oxoid dispensers.

The **minimum order** quantity is **5 vials** (1 box) of the same type.

ANTIBIOTIC DISCS

| | CODE | ANTIBIOTIC | CONTENT | CODE | ANTIBIOTIC | CONTENT |
|----------------------------|---------|-------------------------------|----------|------------|-------------------------------|----------------------------------|
| | AK-10 | Amikacin | 10 µg | CD-50 | Cefdinir | 50 µg <small>CLSI</small> |
| <small>EUCAST CLSI</small> | AK-30 | Amikacin | 30 µg | CDN-5 | Cefditoren | 5 µg |
| | AN-60 | Aminosidin | 60 µg | FEP-5 | Cefepime | 5 µg |
| | AX-2 | Amoxicillin | 2 µg | FEP-10 | Cefepime | 10 µg |
| | AX-10 | Amoxicillin | 10 µg | FEP-30 | Cefepime | 30 µg <small>EUCAST CLSI</small> |
| | AX-20 | Amoxicillin | 20 µg | FEC-15 | Cefepime + Clavulanic acid | 5+10 µg |
| | AX-25 | Amoxicillin | 25 µg | FEC-40 | Cefepime + Clavulanic acid | 30+10 µg |
| | AX-30 | Amoxicillin | 30 µg | CFM-5 | Cefixime | 5 µg <small>EUCAST CLSI</small> |
| <small>EUCAST</small> | AMC-3 | Amoxicillin + Clavulanic acid | 2+1 µg | CFM-10 | Cefixime | 10 µg |
| <small>EUCAST CLSI</small> | AMC-30 | Amoxicillin + Clavulanic acid | 20+10 µg | CFM-30 | Cefixime | 30 µg |
| <small>EUCAST</small> | AM-2 | Ampicillin | 2 µg | CXC-15 | Cefixime + Clavulanic acid | 5+10 µg |
| <small>EUCAST CLSI</small> | AM-10 | Ampicillin | 10 µg | CXC-40 | Cefixime + Clavulanic acid | 30+10 µg |
| | AM-20 | Ampicillin | 20 µg | CDZ-30 | Cefodizime | 30 µg |
| | AM-25 | Ampicillin | 25 µg | CID-30 | Cefonicid | 30 µg |
| | AM-30 | Ampicillin | 30 µg | CEP-30 | Cefoperazone | 30 µg |
| | APX-30 | Ampicillin + Cloxacillin | 25+5 µg | CEP-75 | Cefoperazone | 75 µg <small>CLSI</small> |
| | AMD-11 | Ampicillin + Dipicolonic acid | 11 µg | CES-105 | Cefoperazone + Sulbactam | 75+30 µg |
| <small>EUCAST CLSI</small> | SAM-20 | Ampicillin + Sulbactam | 10+10 µg | CTX-5 | Cefotaxime | 5 µg <small>EUCAST</small> |
| | SAM-30 | Ampicillin + Sulbactam | 20+10 µg | CTX-10 | Cefotaxime | 10 µg |
| <small>CLSI</small> | APR-15 | Apramycin | 15 µg | CTX-30 | Cefotaxime | 30 µg <small>CLSI</small> |
| | APR-30 | Apramycin | 30 µg | CTX/BA-430 | Cefotaxime + Boronic acid | 430 µg |
| <small>CLSI</small> | AZM-15 | Azithromycin | 15 µg | CTC-15 | Cefotaxime + Clavulanic acid | 15 µg |
| | AZM-30 | Azithromycin | 30 µg | CTC-40 | Cefotaxime + Clavulanic acid | 30+10 µg |
| | AZL-30 | Azlocillin | 30 µg | CFX-30 | Cefoxitin + Cloxacillin | 30+200 µg |
| <small>CLSI</small> | AZL-75 | Azlocillin | 75 µg | CEX-780 | Cefotaxime + Cloxacillin | 780 µg |
| | ATM-10 | Aztreonam | 10 µg | CTS-40 | Cefotaxime + Sulbactam | 30+10 µg |
| <small>EUCAST CLSI</small> | ATM-30 | Aztreonam | 30 µg | TCX-40 | Cefotaxime + Tazobactam | 40 µg |
| | B-0,04 | Bacitracin | 0,04 U | CTT-30 | Cefotetan | 30 µg |
| | B-10 | Bacitracin | 10 U | FOX-10 | Cefoxitin | 10 µg |
| | APB-250 | Boronic acid | 250 µg | FOX-30 | Cefoxitin | 30 µg <small>EUCAST CLSI</small> |
| | APB-300 | Boronic acid | 300 µg | FOX/BA-430 | Cefoxitin + Boronic acid | 430 µg |
| | APB-400 | Boronic acid | 400 µg | CPO-30 | Cefpirome | 30 µg |
| | PY-10 | Carbenicillin | 10 µg | CPD-10 | Cefpodoxime | 10 µg <small>EUCAST CLSI</small> |
| | PY-25 | Carbenicillin | 25 µg | CPD-30 | Cefpodoxime | 30 µg |
| <small>CLSI</small> | PY-100 | Carbenicillin | 100 µg | CPC-11 | Cefpodoxime + Clavulanic acid | 10+1 µg |
| | CEC-10 | Cefaclor | 10 µg | CPC-40 | Cefpodoxime + Clavulanic acid | 30+10 µg |
| <small>EUCAST CLSI</small> | CEC-30 | Cefaclor | 30 µg | CPR-30 | Cefprozil | 30 µg <small>CLSI</small> |
| <small>EUCAST</small> | CFR-30 | Cefadroxil | 30 µg | CEQ-10 | Cefquinome | 10 µg |
| <small>CLSI</small> | MA-30 | Cefamandole | 30 µg | CEQ-30 | Cefquinome | 30 µg <small>CLSI</small> |
| <small>EUCAST CLSI</small> | CZ-30 | Cefazolin | 30 µg | CFS-30 | Cefsulodin | 30 µg |
| <small>CLSI</small> | CD-5 | Cefdinir | 5 µg | CPT-5 | Ceftaroline | 5 µg |
| | CD-30 | Cefdinir | 30 µg | CAZ-10 | Ceftazidime | 10 µg <small>EUCAST</small> |

III. ANTIMICROBIAL SUSCEPTIBILITY DISCS

ANTIBIOTIC DISCS

| | CODE | ANTIBIOTIC | CONTENT | CODE | ANTIBIOTIC | CONTENT |
|-------------|------------|-------------------------------|----------|---------|-------------------------|-----------|
| CLSI | CAZ-30 | Ceftazidime | 30 µg | CT-25 | Colistin | 25 µg |
| | CZA-14 | Ceftazidime + Avibactam | 10+4 µg | CT-40 | Colistin | 40 µg |
| | CAZ/BA-430 | Ceftazidime + Boronic acid | 430 µg | CT-50 | Colistin | 50 µg |
| | CZC-20 | Ceftazidime + Clavulanic acid | 20 µg | CT-100 | Colistin | 100 µg |
| | CZC-40 | Ceftazidime + Clavulanic acid | 30+10 µg | DAN-5 | Danofloxacin | 5 µg |
| | CZX-780 | Ceftazidime + Cloxacillin | 780 µg | DAP-30 | Daptomycin | 30 µg |
| EUCAST CLSI | TCA-40 | Ceftazidime + Tazobactam | 40 µg | DCX-1 | Dicloxacillin | 1 µg |
| CLSI | CBT-30 | Ceftibuten | 30 µg | DOR-10 | Doripenem | 10 µg |
| CLSI | FUR-30 | Ceftiofur | 30 µg | DO-10 | Doxycycline | 10 µg |
| | ZOX-30 | Ceftizoxime | 30 µg | DO-30 | Doxycycline | 30 µg |
| | CRO-5 | Ceftriaxone | 5 µg | EDL-750 | EDTA | 750 µg |
| EUCAST CLSI | CRO-10 | Ceftriaxone | 10 µg | EDH-930 | EDTA | 930 µg |
| | CRO-30 | Ceftriaxone | 30 µg | EEL-292 | EDTA + Ertapenem | 292 µg |
| | CFC-40 | Ceftriaxone + Clavulanic acid | 30+10 µg | EEH-750 | EDTA + Ertapenem | 750 µg |
| | CTO-40 | Ceftriaxone + Tazobactam | 30+10 µg | EN-10 | Enoxacin | 10 µg |
| EUCAST CLSI | CXM-5 | Cefuroxime | 5 µg | ENR-5 | Enrofloxacin | 5 µg |
| | CXM-30 | Cefuroxime | 30 µg | ENR-10 | Enrofloxacin | 10 µg |
| | CL-30 | Cephalexin | 30 µg | ETP-10 | Ertapenem | 10 µg |
| | CNM-30 | Cephalonium | 30 µg | ETP-310 | Ertapenem + Boraic acid | 10+300 µg |
| | CPH-30 | Cephaloridine | 30 µg | E-5 | Erythromycin | 5 µg |
| CLSI | KF-5 | Cephalothin | 5 µg | E-10 | Erythromycin | 10 µg |
| | KF-30 | Cephalothin | 30 µg | E-15 | Erythromycin | 15 µg |
| | CE-30 | Cephradine | 30 µg | E-30 | Erythromycin | 30 µg |
| | C-5 | Chloramphenicol | 5 µg | E-60 | Erythromycin | 60 µg |
| EUCAST CLSI | C-10 | Chloramphenicol | 10 µg | FLE-5 | Fleroxacin | 5 µg |
| | C-30 | Chloramphenicol | 30 µg | FFC-30 | Florfenicol | 30 µg |
| | C-50 | Chloramphenicol | 50 µg | FL-5 | Flucloxacillin | 5 µg |
| | CHT-30 | Chlortetracycline | 30 µg | 5FC-1 | Flucytosine | 1 µg |
| EUCAST CLSI | CIP-1 | Ciprofloxacin | 1 µg | FLM-30 | Flumequine | 30 µg |
| | CIP-5 | Ciprofloxacin | 5 µg | FF-30 | Fosfomicin | 30 µg |
| | CIP-10 | Ciprofloxacin | 10 µg | FF-50 | Fosfomicin | 50 µg |
| | CIP-30 | Ciprofloxacin | 30 µg | FF-200 | Fosfomicin | 200 µg |
| | CIP-50 | Ciprofloxacin | 50 µg | FM-100 | Framycetin | 100 µg |
| | CLR-2 | Clarithromycin | 2 µg | FX-15 | Furazolidone | 15 µg |
| CLSI | CLR-5 | Clarithromycin | 5 µg | FX-50 | Furazolidone | 50 µg |
| | CLR-15 | Clarithromycin | 15 µg | FX-100 | Furazolidone | 100 µg |
| EUCAST CLSI | CLX-5 | Clinafloxacin | 5 µg | FA-5 | Fusidic acid | 5 µg |
| | DA-2 | Clindamycin | 2 µg | FA-10 | Fusidic acid | 10 µg |
| | DA-10 | Clindamycin | 10 µg | FA-30 | Fusidic acid | 30 µg |
| | DA-15 | Clindamycin | 15 µg | FA-50 | Fusidic acid | 50 µg |
| | CX-1 | Cloxacillin | 1 µg | GRN-5 | Garenoxacin | 5 µg |
| | CX-5 | Cloxacillin | 5 µg | GAT-5 | Gatifloxacin | 5 µg |
| | CX-10 | Cloxacillin | 10 µg | GAT-10 | Gatifloxacin | 10 µg |
| | CX-25 | Cloxacillin | 25 µg | GAT-30 | Gatifloxacin | 30 µg |
| | CX-30 | Cloxacillin | 30 µg | GEM-5 | Gemifloxacin | 5 µg |
| | CX-500 | Cloxacillin | 500 µg | CN-10 | Gentamicin | 10 µg |
| | ETX-760 | Cloxacillin + Ertapenem | 760 µg | CN-15 | Gentamicin | 15 µg |
| CLSI | MEX-760 | Cloxacillin + Meropenem | 760 µg | CN-30 | Gentamicin | 30 µg |
| | CT-10 | Colistin | 10 µg | CN-50 | Gentamicin | 50 µg |

III. ANTIMICROBIAL SUSCEPTIBILITY DISCS

ANTIBIOTIC DISCS

| | CODE | ANTIBIOTIC | CONTENT | CODE | ANTIBIOTIC | CONTENT | |
|-------------|------------|--------------------------------|-----------|------------|-----------------|---------|-------------|
| | CN-120 | Gentamicin | 120 µg | MI-30 | Minocycline | 30 µg | EUCAST CLSI |
| | CN-200 | Gentamicin | 200 µg | MOX-30 | Moxalactam | 30 µg | CLSI |
| | CN-250 | Gentamicin | 250 µg | MXF-1 | Moxifloxacin | 1 µg | |
| | CN-500 | Gentamicin | 500 µg | MXF-5 | Moxifloxacin | 5 µg | EUCAST CLSI |
| EUCAST CLSI | IPM-10 | Imipenem | 10 µg | MUP-5 | Mupirocin | 5 µg | |
| | IMC-20 | Imipenem + Cilastatin | 10+10 µg | MUP-20 | Mupirocin | 20 µg | |
| | IPE-10 | Imipenem + EDTA | 10 µg | MUP-200 | Mupirocin | 200 µg | EUCAST |
| | IEL-292 | Imipenem + EDTA | 292 µg | NA-30 | Nalidixic acid | 30 µg | EUCAST CLSI |
| | IEH-750 | Imipenem + EDTA | 750 µg | N-5 | Neomycin | 5 µg | |
| | ISP-30 | Isepamicin | 30 µg | N-10 | Neomycin | 10 µg | |
| | INH-1 | Isoniazid | 1 µg | N-30 | Neomycin | 30 µg | CLSI |
| | INH-5 | Isoniazid | 5 µg | NET-5 | Netilmicin | 5 µg | |
| | K-2 | Kanamycin | 2 µg | NET-10 | Netilmicin | 10 µg | EUCAST |
| | K-5 | Kanamycin | 5 µg | NET-30 | Netilmicin | 30 µg | CLSI |
| CLSI | K-30 | Kanamycin | 30 µg | NIT | Nitrocefin | — | |
| | K-50 | Kanamycin | 50 µg | F-50 | Nitrofurantoin | 50 µg | |
| | K-1000 | Kanamycin | 1000 µg | F-100 | Nitrofurantoin | 100 µg | |
| | KCL-45 | Kanamycin + Cephalexin | 45 µg | F-200 | Nitrofurantoin | 200 µg | EUCAST |
| | LEV-1 | Levofloxacin | 1 µg | F-300 | Nitrofurantoin | 300 µg | |
| EUCAST CLSI | LEV-5 | Levofloxacin | 5 µg | NR-100 | Nitrofurazone | 100 µg | CLSI |
| | LEV-15 | Levofloxacin | 15 µg | NTX-20 | Nitroxoline | 20 µg | |
| | L-2 | Lincomycin | 2 µg | NTX-30 | Nitroxoline | 30 µg | |
| | L-10 | Lincomycin | 10 µg | NOR-2 | Norfloxacin | 2 µg | |
| | L-15 | Lincomycin | 15 µg | NOR-5 | Norfloxacin | 5 µg | |
| | L-30 | Lincomycin | 30 µg | NOR-10 | Norfloxacin | 10 µg | |
| | LCN-75 | Lincomycin + Neomycin | 15+60 µg | NOR-30 | Norfloxacin | 30 µg | EUCAST CLSI |
| | LCS-109 | Lincomycin + Spectinomycin | 9+100 µg | NV-5 | Novobiocin | 5 µg | |
| | LNZ-5 | Linezolid | 5 µg | NV-10 | Novobiocin | 10 µg | |
| EUCAST | LNZ-10 | Linezolid | 10 µg | NV-30 | Novobiocin | 30 µg | |
| CLSI | LNZ-30 | Linezolid | 30 µg | O1/129-10 | O129 | 10 µg | |
| CLSI | LOM-10 | Lomefloxacin | 10 µg | O2/129-150 | O129 | 150 µg | |
| | LOM-30 | Lomefloxacin | 30 µg | OFX-2 | Ofloxacin | 2 µg | |
| CLSI | MAR-5 | Marbofloxacin | 5 µg | OFX-5 | Ofloxacin | 5 µg | EUCAST CLSI |
| EUCAST CLSI | MEC-10 | Mecillinam | 10 µg | OFX-10 | Ofloxacin | 10 µg | |
| | MEC-25 | Mecillinam | 25 µg | OL-15 | Oleandomycin | 15 µg | |
| | MEM-10 | Meropenem | 10 µg | O/NPG | ONPG | — | |
| EUCAST CLSI | MEM/BA-310 | Meropenem + Boronic acid | 10+300 µg | OX-1 | Oxacillin | 1 µg | EUCAST CLSI |
| | MEM/BA-610 | Meropenem + Boronic acid | 610 µg | OX-5 | Oxacillin | 5 µg | |
| | MPB-400 | Meropenem + Phenylboronic acid | 400 µg | OX-10 | Oxacillin | 10 µg | |
| | MDP-101 | Meropenem + Dipicolonic acid | 101 µg | OXI | Oxidase | — | |
| | MEL-292 | Meropenem + EDTA | 292 µg | OA-2 | Oxolinic acid | 2 µg | |
| | MEH-750 | Meropenem + EDTA | 750 µg | OA-10 | Oxolinic acid | 10 µg | |
| | MEH-930 | Meropenem + EDTA | 930 µg | T-30 | Oxytetracycline | 30 µg | |
| CLSI | ME-5 | Methicillin | 5 µg | PEF-5 | Pefloxacin | 5 µg | |
| | ME-10 | Methicillin | 10 µg | P-1 | Penicillin G | 1 U | |
| | ME-30 | Methicillin | 30 µg | P-1,5 | Penicillin G | 1,5 U | |
| | MEZ-30 | Mezlocillin | 30 µg | P-2 | Penicillin G | 2 U | |
| CLSI | MEZ-75 | Mezlocillin | 75 µg | P-5 | Penicillin G | 5 U | |
| | MI-25 | Minocycline | 25 µg | P-10 | Penicillin G | 10 U | CLSI |

III. ANTIMICROBIAL SUSCEPTIBILITY DISCS

ANTIBIOTIC DISCS

| | CODE | ANTIBIOTIC | CONTENT | CODE | ANTIBIOTIC | CONTENT |
|-------------|---------|---------------------------|-----------|----------|----------------------------------|---------------|
| | PNV-40 | Penicillin + Novobiocin | 10+30 µg | TEC-30 | Teicoplanin | 30 µg |
| | PI-2 | Pipemidic acid | 2 µg | TCN-40 | Teicoplanin + Norfloxacin | 30+10 µg |
| | PI-20 | Pipemidic acid | 20 µg | TEL-15 | Telithromycin | 15 µg |
| | PI-30 | Pipemidic acid | 30 µg | TEM-30 | Temocillin | 30 µg |
| EUCAST | PRL-30 | Piperacillin | 30 µg | TE-5 | Tetracycline | 5 µg |
| | PRL-75 | Piperacillin | 75 µg | TE-10 | Tetracycline | 10 µg |
| CLSI | PRL-100 | Piperacillin | 100 µg | TE-25 | Tetracycline | 25 µg |
| EUCAST | TPZ-36 | Piperacillin + Tazobactam | 30+6 µg | TE-30 | Tetracycline | 30 µg |
| | TPZ-40 | Piperacillin + Tazobactam | 30+10 µg | TP-30 | Thiamphenicol | 30 µg |
| | TPZ-85 | Piperacillin + Tazobactam | 75+10 µg | TIA-30 | Tiamulin | 30 µg |
| CLSI | TPZ-110 | Piperacillin + Tazobactam | 100+10 µg | TIA-50 | Tiamulin | 50 µg |
| | PB-50 | Polymixin B | 50 U | TIC-75 | Ticarcillin | 75 µg |
| | PB-100 | Polymixin B | 100 U | TIM-85 | Ticarcillin + Clavulanic acid | 75+10 µg |
| CLSI | PB-300 | Polymixin B | 300 U | TGC-15 | Tigecycline | 15 µg |
| | PT-15 | Pristinamycin | 15 µg | TIL-15 | Tilmicosin | 15 µg |
| | ULI-5 | Prulifloxacin | 5 µg | TOB-10 | Tobramycin | 10 µg |
| | PYR | PYR | — | TOB-30 | Tobramycin | 30 µg |
| | RA-1 | Rifampin (Rifampicin) | 1 µg | TMP-1,25 | Trimethoprim | 1,25 µg |
| | RA-2 | Rifampin (Rifampicin) | 2 µg | TMP-2,5 | Trimethoprim | 2,5 µg |
| EUCAST CLSI | RA-5 | Rifampin (Rifampicin) | 5 µg | TMP-5 | Trimethoprim | 5 µg |
| | RA-15 | Rifampin (Rifampicin) | 15 µg | TMP-10 | Trimethoprim | 10 µg |
| | RA-30 | Rifampin (Rifampicin) | 30 µg | TMP-25 | Trimethoprim | 25 µg |
| | ROX-15 | Roxithromycin | 15 µg | TMP-30 | Trimethoprim | 30 µg |
| | ROX-30 | Roxithromycin | 30 µg | SXT-25 | Trimethoprim + Sulphamethoxazole | 1,25+23,75 µg |
| | SPS | SPS | — | S3-250 | Triple Sulphonamides | 250 µg |
| | MBL-750 | SMA/EDTA | 750 µg | S3-300 | Triple Sulphonamides | 300 µg |
| CLSI | SPX-5 | Sparfloxacin | 5 µg | S3-1000 | Triple Sulphonamides | 1000 µg |
| | SPX-10 | Sparfloxacin | 10 µg | TRV-10 | Trovafloxacin | 10 µg |
| | SPT-10 | Spectinomycin | 10 µg | TUL-30 | Tulathromycin | 30 µg |
| | SPT-25 | Spectinomycin | 25 µg | TY-15 | Tylosin | 15 µg |
| CLSI | SPT-100 | Spectinomycin | 100 µg | TY-30 | Tylosin | 30 µg |
| | SP-10 | Spiramycin | 10 µg | TY-60 | Tylosin | 60 µg |
| | SP-30 | Spiramycin | 30 µg | VA-5 | Vancomycin | 5 µg |
| | SP-100 | Spiramycin | 100 µg | VA-10 | Vancomycin | 10 µg |
| CLSI | S-10 | Streptomycin | 10 µg | VA-30 | Vancomycin | 30 µg |
| | S-25 | Streptomycin | 25 µg | VA-120 | Vancomycin | 120 µg |
| EUCAST | S-300 | Streptomycin | 300 µg | VIR-15 | Virginamycin | 15 µg |
| | S-500 | Streptomycin | 500 µg | X | X Factor Disc | - |
| | SD-100 | Sulfadiazine | 100 µg | V | V Factor Disc | - |
| | SD-300 | Sulfadiazine | 300 µg | X+V | X+V Factor Disc | - |
| | STZ-300 | Sulfathiazole | 300 µg | | | |
| | ST-30 | Sulfisoxazole | 30 µg | | | |
| CLSI | ST-250 | Sulfisoxazole | 250 µg | | | |
| CLSI | ST-300 | Sulfisoxazole | 300 µg | | | |
| | SMZ-25 | Sulphamethoxazole | 25 µg | | | |
| | SMZ-50 | Sulphamethoxazole | 50 µg | | | |
| | SMZ-100 | Sulphamethoxazole | 100 µg | | | |
| | SMZ-200 | Sulphamethoxazole | 200 µg | | | |
| | SMZ-300 | Sulphamethoxazole | 300 µg | | | |

III. ANTIMICROBIAL SUSCEPTIBILITY DISCS

DIFFERENTIATION DISCS

| CODE | ANTIBIOTIC | CONTENT | CODE | ANTIBIOTIC | CONTENT |
|--------|------------|---------|------|------------|---------|
| B-0,04 | Bacitracin | 0,04 U | OP-5 | Optochin | 5 µg |
| NV-5 | Novobiocin | 5 µg | | | |

ANTIFUNGAL DISCS

| CODE | ANTIMICOTIC | CONTENT | CODE | ANTIMICOTIC | CONTENT |
|---------|----------------|---------|---------|---------------|---------|
| AMB-20 | Amphotericin B | 20 U | ITR-50 | Itraconazole | 50 µg |
| AMB-100 | Amphotericin B | 100 U | MET-2,5 | Metronidazole | 2,5 µg |
| CAS-5 | Caspofungin | 5 µg | MET-4 | Metronidazole | 4 µg |
| CMZ-30 | Cefmetazole | 30 µg | MET-5 | Metronidazole | 5 µg |
| CLT-10 | Clotrimazole | 10 µg | MET-10 | Metronidazole | 10 µg |
| CLT-20 | Clotrimazole | 20 µg | MET-30 | Metronidazole | 30 µg |
| CLT-50 | Clotrimazole | 50 µg | MET-50 | Metronidazole | 50 µg |
| CLT-300 | Clotrimazole | 300 µg | MET-80 | Metronidazole | 80 µg |
| ECO-10 | Econazole | 10 µg | MCZ-10 | Miconazole | 10 µg |
| ECO-50 | Econazole | 50 µg | MCZ-30 | Miconazole | 30 µg |
| FLU-10 | Fluconazole | 10 µg | MCZ-50 | Miconazole | 50 µg |
| FLU-25 | Fluconazole | 25 µg | NY-100 | Nystatin | 100 U |
| FLU-50 | Fluconazole | 50 µg | POS-5 | Posaconazole | 5 µg |
| FLU-100 | Fluconazole | 100 µg | TRB-30 | Terbinafine | 30 µg |
| 5FC-1 | Flucytosine | 1 µg | VOR-1 | Voriconazole | 1 µg |
| GRS-10 | Griseofulvin | 10 µg | | | |
| ITR-10 | Itraconazole | 10 µg | | | |

AUXILIARY PRODUCTS

| CODE | PRODUCT | CONTENT | CODE | PRODUCT | CONTENT |
|--------|-------------------------|---------|----------|----------------------------|---------|
| BLK/CR | Blank Disc in Cartridge | — | TRG90001 | Trigger (single dispenser) | — |
| OXI/S | Oxidase Test Kit | — | ZON | Zonemeter (Illuminator) | — |
| PYR/S | PYR Test Kit | — | | | |





PLASTIC DISPOSABLES

IV. PLASTIC DISPOSABLES

PETRI-DISHES

| Code | Dimensions mm | Wall thickness | Sterility | Vents | pcs/unit | pcs/box |
|--------------|-----------------------|----------------|------------|--------|----------|---------|
| PET90135 | 35x12,5 mm | thick | Aseptic | triple | 10 | 160 |
| PET90235 | 35x12,5 mm | thick | Irradiated | triple | 10 | 160 |
| PET90155 | 55x14,6 mm | thin | Aseptic | triple | 20 | 1420 |
| PET90155-785 | 55x14,6 mm | thin | Aseptic | triple | 15 | 785 |
| PET90155-320 | 55x14,6 mm | thin | Aseptic | triple | 20 | 320 |
| PET90255 | 55x14,6 mm | thin | Irradiated | triple | 20 | 1420 |
| PET90255-785 | 55x14,6 mm | thin | Irradiated | triple | 15 | 785 |
| PET90255-320 | 55x14,6 mm | thin | Irradiated | triple | 20 | 320 |
| PET90355 | 55x14,6 mm | thin | Aseptic | no | 20 | 1420 |
| PET90355-785 | 55x14,6 mm | thin | Aseptic | no | 15 | 785 |
| PET90355-320 | 55x14,6 mm | thin | Aseptic | no | 20 | 320 |
| PET90455 | 55x14,6 mm | thin | Irradiated | no | 20 | 1420 |
| PET90455-785 | 55x14,6 mm | thin | Irradiated | no | 15 | 785 |
| PET90455-320 | 55x14,6 mm | thin | Irradiated | no | 20 | 320 |
| PET90190 | 90x14,2 mm | thin | Aseptic | triple | 25 | 600 |
| PET90290 | 90x14,2 mm | thin | Irradiated | triple | 25 | 600 |
| PET90390 | 90x14,2 mm | thin | Aseptic | no | 25 | 600 |
| PET90490 | 90x14,2 mm | thin | Irradiated | no | 25 | 600 |
| BP923I25SQ | 90x14,2 mm, 2 sectors | thick | Irradiated | triple | 25 | 500 |
| PET90190-3S | 90x14,2 mm, 3 sectors | thick | Aseptic | triple | 25 | 600 |
| PET90290-3S | 90x14,2 mm, 3 sectors | thick | Irradiated | triple | 25 | 600 |
| PET91140 | 140x14,8 mm | thick | Aseptic | triple | 5 | 220 |
| PET92140 | 140x14,8 mm | thick | Irradiated | triple | 5 | 220 |

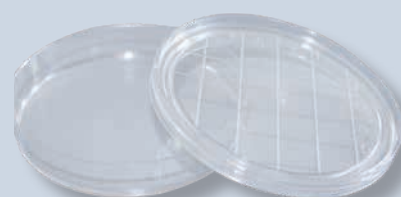
LIMITED
STOCK
LIMITED
STOCK

CONTACT PETRI-DISHES

| Code | Dimensions mm | Sterility | Grip lid | pcs/unit | pcs/box |
|----------|---------------|------------|----------|----------|---------|
| PET90165 | 65x14 mm | Aseptic | YES | 20 | 720 |
| PET90265 | 65x14 mm | Irradiated | YES | 20 | 720 |
| PET90365 | 65x14 mm | Aseptic | NO | 20 | 720 |
| PET90465 | 65x14 mm | Irradiated | NO | 20 | 720 |

PETRI-DISH HOLDERS

| Product | Unit | Code |
|---|------|----------|
| Petri-dish holder for 20 pcs of 55 mm Petri-dishes | 1 | PDH90001 |
| Petri-dish holder for 20 pcs of 65 mm Petri-dishes | 1 | PDH90007 |
| Petri-dish holder for 40 pcs of 65 mm Petri-dishes | 1 | PDH90008 |
| Petri-dish holder for 80 pcs of 65 mm Petri-dishes | 1 | PDH90009 |
| Petri-dish holder for 20 pcs of 70 mm Petri-dishes | 1 | PDH90003 |
| Petri-dish holder for 20 pcs of 90 mm Petri-dishes | 1 | PDH90002 |
| Petri-dish holder for 40 pcs of 90 mm Petri-dishes | 1 | PDH90005 |
| Petri-dish holder for 80 pcs of 90 mm Petri-dishes | 1 | PDH90006 |
| Petri-dish holder for 20 pcs of 100 mm Petri-dishes | 1 | PDH90004 |



IV. PLASTIC DISPOSABLES

URINE CONTAINERS

| Product | pcs/case | pcs/unit | Code |
|---|----------|----------|----------|
| Container, 60 ml, Screw Cap, non-sterile, inserted | 600 | bulk | URC90007 |
| Container, 60 ml, Screw Cap, sterile, inserted | 600 | bulk | URC90008 |
| Container, 60 ml, Screw Cap, sterile, inserted, individually wrapped | 500 | 1 | URC90012 |
| Container, 120 ml, Screw Cap, non-sterile, inserted | 300 | — | URC90005 |
| Container, 120 ml, Screw Cap, sterile, inserted | 300 | — | URC90006 |
| Container, 120 ml, Screw Cap, sterile, inserted, individually wrapped | 250 | 1 | URC90009 |
| Container, 200 ml, Screw Cap, non-sterile, separated | 400 | — | URC90011 |
| Container, 200 ml, Screw Cap, sterile, inserted | 300 | — | URC90014 |
| Container, 200 ml, Screw Cap, sterile, inserted, individually wrapped | 250 | 1 | URC90015 |



FAECAL CONTAINERS

| Product | pcs/case | Code |
|-----------------------------------|----------|-------------|
| Faecal Container, 2 parts (10 ml) | 2200 | FEC90001 |
| Faecal Container, 3 parts (22 ml) | 1300 | FEC90002 |
| Absorption Tissue | 450 | FEC90008 |
| Middle Wrapping, Autoclavable | 900 | FEC90003 |
| Outer Wrapping, Autoclavable | 600 | FEC90004 |
| Outer Carton Box | 1450 | FEC90010 |
| In Set (with FEC90001) | 300 | FEC90009-02 |
| In Set (with FEC90002) | 300 | FEC90009-03 |



BLOOD CONTAINERS

| Product | pcs/case | Code |
|-----------------------------------|----------|----------|
| Absorption Tissue | 300 | BTC90001 |
| Blood Container, Outer Tube | 500 | BTC90002 |
| Blood Container, Outer Carton Box | 1300 | BTC90003 |
| In Set | 200 | BTC90005 |



IV. PLASTIC DISPOSABLES

SWABS

| Product | pcs/case | pcs/unit | Code |
|---|----------|----------|----------|
| Swab Applicator, in tube, wooden, sterile | 2500 | 20 | SWA90001 |
| Swab Applicator, in tube, plastic, sterile | 2500 | 100 | SWA90006 |
| Swab Applicator, in tube, wire, sterile | 2500 | 20 | SWA90007 |
| Absorption Tissue | — | 300 | BTC90001 |
| Cotton-tipped Applicator, wooden | 20000 | 100 | CTA90005 |
| Cotton-tipped Applicator, wooden, sterile | 15000 | 10 | CTA90001 |
| Cotton-tipped Applicator, wooden, sterile | 10000 | 2 | CTA90007 |
| Cotton-tipped Applicator, wooden, sterile, indiv. wrapped | 3000 | 1 | CTA90003 |
| Cotton-tipped Applicator, plastic | 20000 | 100 | CTA90006 |
| Cotton-tipped Applicator, plastic, sterile | 15000 | 10 | CTA90002 |
| Cotton-tipped Applicator, plastic, sterile, indiv. wrapped | 3000 | 1 | CTA90004 |
| Cotton-tipped Applicator, wire | 20000 | 100 | CTA90010 |
| Cotton-tipped Applicator, wire, sterile | 15000 | 10 | CTA90008 |
| Cotton-tipped Applicator, wire, sterile, indiv. wrapped | 3000 | 1 | CTA90009 |
| NEW Breakable plastic Applicator, oropharyngeal, indiv. wrapped, sterile | 100 | 10000 | CTA90014 |
| NEW Breakable plastic Applicator, nasopharyngeal, indiv. wrapped, sterile | 200 | 10000 | CTA90015 |

CULTURE MEDIA TUBES

CULTURE MEDIA TUBES, PLASTIC

| Product | pcs/case | pcs/unit | Code |
|---|----------|----------|----------|
| Culture Media Tube, plastic, with special cap, 100x12 mm | 2000 | — | TUB91001 |
| Culture Media Tube, plastic, with special cap, 100x12 mm, sterile | 3000 | 100 | TUB92001 |
| Culture Media Tube, plastic, with special cap, 100x16 mm | 1500 | — | TUB91002 |
| Culture Media Tube, plastic, with special cap, 100x16 mm, sterile | 2000 | 100 | TUB92002 |
| Culture Media Tube, plastic, with special cap, 150x16 mm | 1000 | — | TUB91003 |
| Culture Media Tube, plastic, with special cap, 150x16 mm, sterile | 1200 | 25 | TUB92003 |

CULTURE MEDIA TUBES, GLASS

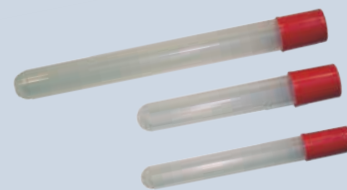
| Product | pcs/case | pcs/unit | Code |
|---|----------|----------|----------|
| Culture Media Tube, glass, with special cap, 100x12 mm, in box | 1800 | 50 | GTU91001 |
| Culture Media Tube, glass, with special cap, 100x12 mm, in box, sterile | 1800 | 50 | GTU92001 |
| Culture Media Tube, glass, with special cap, 100x15 mm, in box | 800 | 50 | GTU91002 |
| Culture Media Tube, glass, with special cap, 100x15 mm, in box, sterile | 800 | 50 | GTU92002 |
| Culture Media Tube, glass, with special cap, 150x15 mm, in box | 800 | 50 | GTU91003 |
| Culture Media Tube, glass, with special cap, 150x15 mm, in box, sterile | 800 | 50 | GTU92003 |
| Culture Media Tube, glass, without special cap, 100x12 mm, bulk | 3000 | 250 | GTU91004 |
| Culture Media Tube, glass, without special cap, 100x15 mm, bulk | 1500 | 250 | GTU91005 |
| Culture Media Tube, glass, without special cap, 150x15 mm, bulk | 1200 | 200 | GTU91006 |
| Special cap for Ø12 mm glass tubes, bulk | 12000 | — | GTU91007 |
| Special cap for Ø15 mm glass tubes, bulk | 8000 | — | GTU91008 |



IV. PLASTIC DISPOSABLES

TUBES

| Product | pcs/case | pcs/unit | Code |
|---|----------|----------|----------|
| Durham Tube, glass (30x8 mm) | 500 | — | TUB90004 |
| Eppendorf Tube, 1,5 ml | 1000 | 1000 | TUB92208 |
| Screw Cap Tubes, conical bottom, 15 ml without skirt | 750 | 50 | TUB91159 |
| Screw Cap Tubes, conical bottom, 15 ml without skirt, sterile | 750 | 50 | TUB92159 |
| Screw Cap Tubes, conical bottom, 50 ml without skirt | 300 | 20 | TUB91160 |
| Screw Cap Tubes, conical bottom, 50 ml without skirt, sterile | 300 | 20 | TUB92160 |
| Screw Cap Tubes, conical bottom, 50 ml with skirt | 250 | 25 | TUB91161 |
| Screw Cap Tubes, conical bottom, 50 ml with skirt, sterile | 250 | 25 | TUB92161 |
| Cryotube with hub and gasket, 1,8 ml, sterile | 10000 | 500 | TUB93001 |
| Cryotube with hub and gasket, 5 ml, sterile | 3200 | 200 | TUB93002 |



IV. PLASTIC DISPOSABLES

SEROLOGICAL PIPETTES

| Product (code) | Volume ml | Type | Sterility | pcs/case | pcs/box | pcs/unit |
|----------------|-----------|--------|-----------|----------|---------|----------|
| 357770 | 1 | narrow | sterile | 2000 | 500 | 1 |
| 357776 | 1 | narrow | sterile | 4000 | 1000 | 25 |
| 357771 | 2 | narrow | sterile | 2000 | 500 | 1 |
| 357777 | 2 | narrow | sterile | 4000 | 1000 | 25 |
| 357772 | 5 | narrow | sterile | 1000 | 250 | 1 |
| 357778 | 5 | narrow | sterile | 1500 | 375 | 25 |
| 357773 | 10 | narrow | sterile | 800 | 200 | 1 |
| 357779 | 10 | narrow | sterile | 1000 | 250 | 25 |
| 357774 | 25 | narrow | sterile | 400 | 100 | 1 |
| 357775 | 50 | narrow | sterile | 200 | 50 | 1 |

Codes of serological pipettes can change.

PIPETTE TIPS

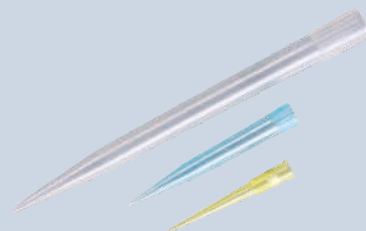
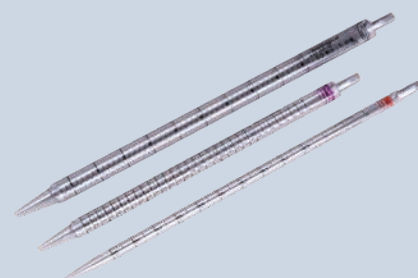
| Product | pcs/case | pcs/unit | Code |
|---|----------|----------|----------|
| 10 µl (Eppendorf) | 50000 | 1000 | PIT91807 |
| 200 µl (Eppendorf) | 50000 | 1000 | PIT91804 |
| 200 µl (Gilson) | 50000 | 1000 | PIT91801 |
| Empty rack for 96 pcs of PIT91801 tips | 100 | 1 | PIT92801 |
| 200 µl PIT91801 tips (96 pcs) in rack | 48 | 1 | PIT93801 |
| 200 µl PIT91801 tips (96 pcs) in rack, sterile | 48 | 1 | PIT94801 |
| 1000 µl (Eppendorf) | 10000 | 500 | PIT91803 |
| 1000 µl (Gilson) | 10000 | 500 | PIT91805 |
| Empty rack for 60 pcs of PIT91805 tips | 100 | 1 | PIT92805 |
| 1000 µl PIT91805 tips (60 pcs) in rack | 48 | 1 | PIT93805 |
| 1000 µl PIT91805 tips (60 pcs) in rack, sterile | 48 | 1 | PIT94805 |
| 5000 µl (Biohit) | 4800 | 300 | PIT91821 |
| 5000 µl (Finn) | 4800 | 300 | PIT91802 |

FILTER PIPETTE TIPS

| Product | pcs/case | pcs/unit | Code |
|---|----------|----------|----------|
| 200 µl (Gilson) with filter | 50000 | 1000 | PIT91808 |
| Empty rack for 96 pcs of PIT91808 tips | 100 | 1 | PIT92801 |
| 200 µl PIT91808 tips (96 pcs) in rack | 48 | 1 | PIT93808 |
| 200 µl PIT91808 tips (96 pcs) in rack, sterile | 48 | 1 | PIT94808 |
| 1000 µl (Gilson) with filter | 10000 | 500 | PIT91809 |
| Empty rack for 60 pcs of PIT91809 tips | 100 | 1 | PIT92805 |
| 1000 µl PIT91809 tips (60 pcs) in rack | 48 | 1 | PIT93809 |
| 1000 µl PIT91809 tips (60 pcs) in rack, sterile | 48 | 1 | PIT94809 |

PASTEUR PIPETTES

| Product | pcs/case | pcs/unit | Code |
|--|----------|----------|----------|
| Pasteur Pipette, 1 ml, non-sterile | 5000 | 500 | PPI91001 |
| Pasteur Pipette, 1 ml, individually wrapped, sterile | 2000 | 100 | PPI92001 |
| Pasteur Pipette, 3 ml, non-sterile | 5000 | 500 | PPI91002 |
| Pasteur Pipette, 3 ml, individually wrapped, sterile | 2000 | 100 | PPI92002 |



IV. PLASTIC DISPOSABLES

STOMACHER BAGS

| Product | pcs/case | pcs/unit | Code |
|--|----------|----------|----------|
| Plastic Bag for Stomacher Blender, 18x35 cm, sterile | 1000 | 100 | HOB90004 |
| Plastic Bag for Stomacher Blender, 18x30 cm, sterile | 1000 | 100 | HOB90001 |
| Plastic Bag for Stomacher Blender, 18x26 cm, sterile | 2000 | 100 | HOB90003 |

STOMACHER BAGS WITH FILTER

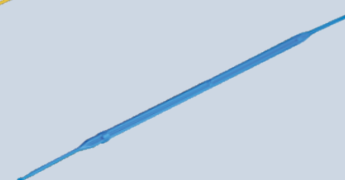
| Product | pcs/case | pcs/unit | Code |
|---|----------|----------|------------|
| Plastic Bag for Stomacher Blender, with filter, 18x30 cm, sterile | 1500 | 50 | SB009.0500 |

ZIPPER BAGS

| Product | pcs/case | pcs/unit | Code |
|---|----------|----------|----------|
| Zipper bag, sterile, 300 x 400 cm | — | — | FZB90006 |
| Zipper bag, sterile, 230 x 320 cm | 3000 | 100 | FZB90007 |
| Zipper bag, sterile, 200 x 300 cm | 3000 | 100 | FZB90005 |
| Zipper bag, sterile, 150 x 100 cm | 6000 | 100 | FZB90004 |
| Zipper bag, non-sterile, 400 x 500 cm | — | — | FZB91006 |
| Zipper bag, non-sterile, 230 x 320 cm | 3000 | 100 | FZB91007 |
| Zipper bag, non-sterile, 200 x 300 cm | 3000 | 100 | FZB91005 |
| Zipper bag, non-sterile, 150 x 100 cm | 6000 | 100 | FZB91004 |
| Zipper bag with write-on label, sterile, 250 x 350 cm | 3000 | 100 | FZB93008 |
| Zipper bag with write-on label, sterile, 200 x 300 cm | 3000 | 100 | FZB93005 |
| Zipper bag with write-on label, sterile, 180 x 250 cm | 3000 | 100 | FZB93004 |
| Zipper bag with write-on label, sterile, 120 x 170 cm | 3000 | 100 | FZB93003 |
| Zipper bag with write-on label, sterile, 100 x 150 cm | 3000 | 100 | FZB93002 |
| Zipper bag with write-on label, sterile, 60 x 80 cm | 3000 | 100 | FZB93001 |
| Zipper bag with write-on label, non-sterile, 250 x 350 cm | 3000 | 100 | FZB92008 |
| Zipper bag with write-on label, non-sterile, 200 x 300 cm | 3000 | 100 | FZB92005 |
| Zipper bag with write-on label, non-sterile, 180 x 250 cm | 3000 | 100 | FZB92004 |
| Zipper bag with write-on label, non-sterile, 120 x 170 cm | 3000 | 100 | FZB92003 |
| Zipper bag with write-on label, non-sterile, 100 x 150 cm | 3000 | 100 | FZB92002 |
| Zipper bag with write-on label, non-sterile, 60 x 80 cm | 0 | 100 | FZB92001 |
| Autoclavable bags 600 x 760 mm | 0 | 1000 | AKZ90001 |

LOOPS

| Product | pcs/case | pcs/unit | Code |
|---|----------|----------|----------|
| Inoculating Loop, 1µl, sterile, 20/bag | 10000 | 1000 | SLO91001 |
| Inoculating Loop, 1µl, sterile, individually wrapped | 3000 | 100 | SLO92001 |
| Inoculating Loop, 10µl, sterile, 20/bag | 10000 | 1000 | SLO91002 |
| Inoculating Loop, 10µl, sterile, individually wrapped | 3000 | 100 | SLO92002 |
| Spreader, sterile, 5pcs/bag | 2000 | 200 | SPR90005 |



IV. PLASTIC DISPOSABLES

OTHERS

| Product | pcs/case | pcs/unit | Code |
|---|----------|----------|----------|
| Sampling Spoon, sterile, individually wrapped | 1200 | 20 | SSP90001 |
| Microscopic slide, frosted one side one end, 25x76 mm | 3600 | 72 | MSL92576 |
| Microscopic slide, plain, 25x76 mm | 2500 | 50 | MSL92676 |
| Cover slide, glass, 20x20 mm | 20000 | 100 | COS92020 |
| Cover slide, glass, 24x20 mm | 20000 | 100 | COS92420 |
| Cover slide, glass, 24x40 mm | 20000 | 100 | COS92440 |
| Cover slide, glass, 24x50 mm | 20000 | 100 | COS92450 |
| Cover slide, glass, 24x55 mm | 20000 | 100 | COS92455 |
| Cover slide, glass, 24x60 mm | 20000 | 100 | COS92460 |
| Plastic forceps | | | PFO90001 |
| Plastic forceps, sterile | | | PFO90002 |



CARDBOARD BOXES FOR HAZARDOUS WASTE

| Product | pcs/unit | Code |
|---|----------|----------|
| Cardboard Box for Hazardous Waste, 3 l | - | WCO90003 |
| Cardboard Box for Hazardous Waste, 6 l | - | WCO90006 |
| Cardboard Box for Hazardous Waste, 12 l | - | WCO90012 |
| Cardboard Box for Hazardous Waste, 25 l | - | WCO90025 |
| Cardboard Box for Hazardous Waste, 50 l | - | WCO90050 |

Boxes and bags holding ADR Certificate ensure the safe transport to incineration.
After permanent closure boxes can not be opened without destruction.



PLASTIC BAGS FOR HAZARDOUS WASTE

| Product | pcs/unit | Code |
|---|----------|----------|
| Plastic Bag for Hazardous Waste, 30x90 cm (5kg) | 200 | WCA90001 |
| Plastic Bag for Hazardous Waste, 40x115 cm (10kg) | 200 | WCA90002 |
| Band for Plastic Bags | 100 | STR90001 |





v. SUPPLEMENTS

SUPPLEMENTS

| Product | Package | Code |
|---|---------|-------------|
| Aeromonas Selective Supplement | 4 ml | AES80004 |
| Ampicillin (5 mg) Supplement | 4 ml | AMP80004 |
| Bacitracin (150 mg) Supplement | 4 ml | BAC80004 |
| Bordetella Selective Supplement | 4 ml | BSS80004 |
| Brilliant Green Solution, Sterile | 100 ml | BGS80100-1D |
| Brilliant Green Solution, Sterile | 30 ml | BGS80030-1D |
| Brilliant Green Solution, Sterile | 10 ml | BGS80010-1D |
| Brucella Selective Supplement | 4 ml | BAS80004 |
| Campylobacter Growth Supplement | 4 ml | CGS80004 |
| Campylobacter Selective Supplement, Blaser-Wang | 4 ml | CBW80004 |
| Campylobacter Selective Supplement, Bolton | 4 ml | CBS80004 |
| Campylobacter Selective Supplement, CCDA | 4 ml | CCS80004 |
| Campylobacter Selective Supplement, Karmali | 4 ml | CPK80004 |
| Campylobacter Selective Supplement, Preston | 4 ml | CPS80004 |
| Campylobacter Selective Supplement, Skirrow | 4 ml | CSS80004 |
| Cefixime Tellurite Selective Supplement | 4 ml | CTS80004 |
| Clostridium Selective Supplement | 4 ml | CDS80004 |
| DTM Selective Supplement | 4 ml | DTS80004 |
| DRBC Plus Selective Supplement | 4 ml | RBS80004 |
| Endo Basic Fuchsin Solution | 60 ml | FBS80060 |
| Ferric Ammonium Citrate Solution, Sterile | 10 ml | FAC80010 |
| Ferric Ammonium Citrate Solution, Sterile | 30 ml | FAC80030 |
| Gardnerella Selective Supplement | 4 ml | GAS80004 |
| GC Selective Supplement, VCN | 4 ml | VCN80004 |
| GC Selective Supplement, VCNT | 4 ml | VCT80004 |
| Glycerol Supplement | 100 ml | GLC80100 |
| Glycerol Supplement | 500 ml | GLC80500 |
| Growth Factor Mixture | 5 ml | GFM80005 |
| GSP Selective Supplement | 4 ml | GSU80004 |
| Haemophilus Supplement | 4 ml | HTS80004 |
| K Agar Malic Acid Solution | 5 ml | KMS80005 |
| Lactic Acid Solution | 100 ml | LAS80100 |
| Legionella BCYE Growth Factor Mixture with Cysteine for 100 ml agar base | 5 ml | LGF80005-01 |
| Legionella BCYE Growth Factor Mixture with Cysteine for 500 ml agar base | 5 ml | LGF80005-02 |
| Legionella BCYE Growth Factor Mixture without Cysteine for 100 ml agar base | 5 ml | LWC80005-01 |
| Legionella BCYE Growth Factor Mixture without Cysteine for 500 ml agar base | 5 ml | LWC80005-02 |
| Legionella Selective Supplement, AB, for 100 ml of BCYE Agar, AB | 5 ml | ABL80005-01 |
| Legionella Selective Supplement, AB, or 500 ml of BCYE Agar, AB | 5 ml | ABL80005-02 |
| Legionella Selective Supplement BMPA, for 100 ml agar base | 5 ml | BMP80005-01 |
| Legionella Selective Supplement BMPA, for 500 ml agar base | 5 ml | BMP80005-02 |
| Legionella Selective Supplement GVPC, for 100 ml agar base | 5 ml | GVP80005-01 |
| Legionella Selective Supplement GVPC, for 500 ml agar base | 5 ml | GVP80005-02 |
| Legionella Selective Supplement MWY, for 100 ml agar base | 5 ml | MWY80005-01 |
| Legionella Selective Supplement MWY, for 500 ml agar base | 5 ml | MWY80005-02 |
| Listeria Selective Supplement, Fraser | 4 ml | LSF80004 |
| Listeria Selective Supplement, Half Fraser | 4 ml | LSH80004 |
| Listeria Selective Supplement, Oxford | 4 ml | LSO80004 |
| Listeria Selective Supplement, Palcam | 4 ml | LSP80004 |
| Listeria Selective Supplement, UVM I | 4 ml | LU180004 |
| Listeria Selective Supplement, UVM II | 4 ml | LU280004 |
| M-CP Chromogenic Supplement, for 100 ml agar base | 4 ml | MCC80004-01 |
| M-CP Chromogenic Supplement, for 500 ml agar base | 4 ml | MCC80004-02 |

V. SUPPLEMENTS

SUPPLEMENTS

| Product | Package | Code |
|--|----------|-------------|
| M-CP Selective Supplement, for 100 ml agar base | 4 ml | MPS80004-01 |
| M-CP Selective Supplement, for 500 ml agar base | 4 ml | MPS80004-02 |
| Malachite Green Solution, Sterile | 10 ml | MSO80010 |
| Malachite Green Solution, Sterile | 30 ml | MSO80030 |
| MRSA Selective Supplement | 4 ml | MSS80004 |
| MUG Supplement | 4 ml | MGS80004 |
| NEW Mycobactin J Supplement | 5 ml | MJS80004 |
| OGYE Selective Supplement | 4 ml | OGS80004 |
| Perfringens Selective Supplement, OPSP, A + B | 2 x 4 ml | POS80004 |
| Perfringens Selective Supplement, SFP | 4 ml | PFS80004 |
| Perfringens Selective Supplement, TSC | 4 ml | PSS80004 |
| Potassium Tellurite Solution, Sterile | 10 ml | PTS80010 |
| Potassium Tellurite Solution, Sterile | 30 ml | PTS80030 |
| Pseudomonas Selective Supplement, CFC | 4 ml | CFC80004 |
| Pseudomonas Selective Supplement, CN | 4 ml | PCN80004 |
| Pseudomonas Selective Supplement, PP | 4 ml | PPP80004 |
| RPMI MOPS Solution, Sterile | 100 ml | RGS80100 |
| Salmonella Selective Supplement | 4 ml | SSS80004 |
| Salmonella Plus Selective Supplement | 4 ml | SSP80004 |
| Shigella Selective Supplement | 4 ml | SBS80004 |
| Sodium Metabisulphite Solution, Sterile | 10 ml | SMS80010 |
| Sodium Metabisulphite Solution, Sterile | 30 ml | SMS80030 |
| Staph/Strep Selective Supplement | 4 ml | SHS80004 |
| Sterile Egg Yolk Emulsion | 25 ml | EYE80025 |
| Sterile Egg Yolk Emulsion | 50 ml | EYE80050 |
| Sterile Egg Yolk Emulsion | 100 ml | EYE80100 |
| Sterile Egg Yolk Polymyxin (PEMBA) Emulsion | 25 ml | EYP80025-01 |
| Sterile Egg Yolk Polymyxin (PEMBA) Emulsion | 50 ml | EYP80050-01 |
| Sterile Egg Yolk Polymyxin (PREP) Emulsion | 50 ml | EYP80050-02 |
| Sterile Egg Yolk Polymyxin (PREP) Emulsion | 100 ml | EYP80100-02 |
| Sterile Egg Yolk Tellurite Emulsion | 25 ml | EYT80025 |
| Sterile Egg Yolk Tellurite Emulsion | 50 ml | EYT80050 |
| Sterile Egg Yolk Tellurite Emulsion | 100 ml | EYT80100 |
| Sterile Egg Yolk Tellurite Emulsion 20% | 50 ml | EYT80050-20 |
| Sulphamandelate Selective Supplement | 4 ml | SUS80004 |
| Tetrathionate Iodine-Iodide Selective Supplement | 10 ml | TTS80010 |
| Tributyryn Supplement | 250 ml | TRS80250 |
| Trichomonas Selective Supplement | 4 ml | TSS80004 |
| Triton X-100 Supplement | 100 ml | TXS80100 |
| Triton X-100 Supplement | 500 ml | TXS80500 |
| TTC Solution, Sterile | 10 ml | TTC80010 |
| TTC Solution, Sterile | 30 ml | TTC80030 |
| TWEEN 20 Supplement | 100 ml | TW28100 |
| TWEEN 20 Supplement | 500 ml | TW28500 |
| TWEEN 80 Supplement | 100 ml | TWS80100 |
| TWEEN 80 Supplement | 500 ml | TWS80500 |
| Vancomycin (3 mg) Supplement | 4 ml | VSS80004-03 |
| Vancomycin (13 mg) Supplement | 4 ml | VSS80004-13 |
| Yersinia (CIN) Selective Supplement | 4 ml | CIN80004 |

NOTES

Lined area for notes, consisting of multiple horizontal lines.

NOTES

Lined area for notes, consisting of multiple horizontal lines.

ALPHABETICAL LIST OF MEDIA

| NAME | | | | | | | | | | | |
|-------|---------|----------|----------|----------|--------|--------|--------------------|--------------------|--------------------|------------------|------------------|
| 500 g | 5 000 g | 10 000 g | 25 000 g | 50 000 g | 100 ml | 500 ml | tube* 100x12 mm | tube* 100x15 mm | tube* 150x15 mm | plate** 55 mm | plate** 90 mm |

| NAME | | | | | | | | | | | |
|--|----------|-----------|-----------|-----------|----------|----------|--------------------|--------------------|--------------------|------------------|------------------|
| 500 g | 5 000 g | 10 000 g | 25 000 g | 50 000 g | 100 ml | 500 ml | tube* 100x12 mm | tube* 100x15 mm | tube* 150x15 mm | plate** 55 mm | plate** 90 mm |
| A-1 Broth Base | | | | | | | | | | | |
| A1B20500 | A1B25000 | A1B210000 | A1B225000 | A1B250000 | | | | | | | |
| A-1 Broth | | | | | | | | | | | |
| Supplement: Triton X-100 Supplement | | | | | | | | | | | |
| | | | | | A1B30100 | A1B30500 | | | A1B40010 | | |
| Acetamide Broth | | | | | | | | | | | |
| ACB20500 | ACB25000 | ACB210000 | ACB225000 | ACB250000 | ACB30100 | ACB30500 | ACB40003 | | | | |
| Acetate Differential Agar | | | | | | | | | | | |
| ADA20500 | ADA25000 | ADA210000 | ADA225000 | ADA250000 | ADA30100 | ADA30500 | ADA40002 | | | | |
| ACG Agar Base | | | | | | | | | | | |
| Supplement: Glycerol | | | | | | | | | | | |
| ACG20500 | ACG25000 | | | | ACG30100 | ACG30500 | | | | ACG50055 | ACG50090 |
| Aeromonas Agar Base | | | | | | | | | | | |
| AEA20500 | AEA25000 | AEA210000 | AEA225000 | AEA250000 | AEA30100 | AEA30500 | | | | | |
| Aeromonas Agar | | | | | | | | | | | |
| Supplement: Aeromonas Selective Supplement | | | | | | | | | | | |
| | | | | | | | | | | AEA50055 | AEA50090 |
| Anaerobe Isolation Agar | | | | | | | | | | | |
| AIA20500 | AIA25000 | AIA210000 | AIA225000 | AIA250000 | AIA30100 | AIA30500 | | | | AIA50055 | AIA50090 |
| Anaerobe Isolation Blood Agar | | | | | | | | | | | |
| Supplement: Defibrinated Blood | | | | | | | | | | | |
| | | | | | | | | | | AIA50055-01 | AIA50090-01 |
| Anaerobe Isolation Broth | | | | | | | | | | | |
| AIB20500 | AIB25000 | AIB210000 | AIB225000 | AIB250000 | AIB30100 | AIB30500 | | | AIB40010 | | |
| PharmaBio® Antibiotic Assay Medium E | | | | | | | | | | | |
| PME20500 | PME25000 | PME210000 | PME225000 | PME250000 | PME30100 | PME30500 | | | | | |
| PharmaBio® Antibiotic Assay Medium No.1 | | | | | | | | | | | |
| P0120500 | P0125000 | P01210000 | P01225000 | P01250000 | P0130100 | P0130500 | | | | | |
| PharmaBio® Antibiotic Assay Medium No.2 | | | | | | | | | | | |
| P0220500 | P0225000 | P02210000 | P02225000 | P02250000 | P0230100 | P0230500 | | | | | |
| PharmaBio® Antibiotic Assay Medium No.3 | | | | | | | | | | | |
| P0320500 | P0325000 | P03210000 | P03225000 | P03250000 | P0330100 | P0330500 | | | | | |
| PharmaBio® Antibiotic Assay Medium No.5 | | | | | | | | | | | |
| P0520500 | P0525000 | P05210000 | P05225000 | P05250000 | P0530100 | P0530500 | | | | | |
| PharmaBio® Antibiotic Assay Medium No.8 | | | | | | | | | | | |
| P0820500 | P0825000 | P08210000 | P08225000 | P08250000 | P0830100 | P0830500 | | | | | |
| PharmaBio® Antibiotic Assay Medium No.9 | | | | | | | | | | | |
| P0920500 | P0925000 | P09210000 | P09225000 | P09250000 | P0930100 | P0930500 | | | | | |
| PharmaBio® Antibiotic Assay Medium No.10 Base | | | | | | | | | | | |
| P1020500 | P1025000 | P10210000 | P10225000 | P10250000 | | | | | | | |
| PharmaBio® Antibiotic Assay Medium No.10 | | | | | | | | | | | |
| Supplement: TWEEN 80 Supplement | | | | | | | | | | | |
| | | | | | P1030100 | P1030500 | | | | | |
| PharmaBio® Antibiotic Assay Medium No.11 | | | | | | | | | | | |
| P1120500 | P1125000 | P11210000 | P11225000 | P11250000 | P1130100 | P1130500 | | | | | |
| PharmaBio® Antibiotic Assay Medium No.12 | | | | | | | | | | | |
| P1220500 | P1225000 | P12210000 | P12225000 | P12250000 | P1230100 | P1230500 | | | | | |

| NAME | | | | | | | | | | | |
|-------|---------|----------|----------|----------|--------|--------|--------------------|--------------------|--------------------|------------------|------------------|
| 500 g | 5 000 g | 10 000 g | 25 000 g | 50 000 g | 100 ml | 500 ml | tube* 100x12 mm | tube* 100x15 mm | tube* 150x15 mm | plate** 55 mm | plate** 90 mm |

| | | | | | | | | | | | |
|---|----------|-----------|-----------|-----------|----------|----------|--|--|--|----------|----------|
| PharmaBio® Antibiotic Assay Medium No.13 | | | | | | | | | | | |
| P1320500 | P1325000 | P13210000 | P13225000 | P13250000 | P1330100 | P1330500 | | | | | |
| PharmaBio® Antibiotic Assay Medium No.19 | | | | | | | | | | | |
| P1920500 | P1925000 | P19210000 | P19225000 | P19250000 | P1930100 | P1930500 | | | | | |
| PharmaBio® Antibiotic Assay Medium No.24 | | | | | | | | | | | |
| P2420500 | P2425000 | P24210000 | P24225000 | P24250000 | P2430100 | P2430500 | | | | | |
| PharmaBio® Antibiotic Assay Medium No.32 | | | | | | | | | | | |
| P3220500 | P3225000 | P32210000 | P32225000 | P32250000 | P3230100 | P3230500 | | | | | |
| PharmaBio® Antibiotic Assay Medium No.34 Base | | | | | | | | | | | |
| P3420500 | P3425000 | P34210000 | P34225000 | P34250000 | | | | | | | |
| PharmaBio® Antibiotic Assay Medium No.34 | | | | | | | | | | | |
| Supplement: Glycerol Supplement | | | | | | | | | | | |
| | | | | | | | | | | P3430100 | P3430500 |
| PharmaBio® Antibiotic Assay Medium No.35 Base | | | | | | | | | | | |
| P3520500 | P3525000 | P35210000 | P35225000 | P35250000 | | | | | | | |
| PharmaBio® Antibiotic Assay Medium No.35 | | | | | | | | | | | |
| Supplement: Glycerol Supplement | | | | | | | | | | | |
| | | | | | | | | | | A3530100 | A3530500 |
| PharmaBio® Antibiotic Assay Medium No.36 | | | | | | | | | | | |
| P3620500 | P3625000 | P36210000 | P36225000 | P36250000 | P3630100 | P3630500 | | | | | |
| PharmaBio® Antibiotic Assay Medium No.39 | | | | | | | | | | | |
| A3920500 | A3925000 | A39210000 | A39225000 | A39250000 | A3930100 | A3930500 | | | | | |
| APT Agar Base | | | | | | | | | | | |
| APT20500 | APT25000 | APT210000 | APT225000 | APT250000 | | | | | | | |
| APT Agar | | | | | | | | | | | |
| Supplement: TWEEN 80 Supplement | | | | | | | | | | | |
| | | | | | | | | | | APT30100 | APT30500 |
| | | | | | | | | | | APT50055 | APT50090 |
| APT Broth Base | | | | | | | | | | | |
| APB20500 | APB25000 | APB210000 | APB225000 | APB250000 | | | | | | | |
| APT Broth | | | | | | | | | | | |
| Supplement: TWEEN 80 Supplement | | | | | | | | | | | |
| | | | | | | | | | | APB30100 | APB30500 |
| | | | | | | | | | | | APB40010 |
| Arginine Broth | | | | | | | | | | | |
| ARB20500 | ARB25000 | ARB210000 | ARB225000 | ARB250000 | ARB30100 | ARB30500 | | | | | ARB40010 |
| Artificial Sea Water | | | | | | | | | | | |
| SIS20500 | SIS25000 | | | | SIS30100 | SIS30500 | | | | | |
| Asparagine Broth Base | | | | | | | | | | | |
| ASB20500 | ASB25000 | ASB210000 | ASB225000 | ASB250000 | | | | | | | |
| Asparagine Broth | | | | | | | | | | | |
| Supplement: Glycerol Supplement | | | | | | | | | | | |
| | | | | | | | | | | ASB30100 | ASB30500 |
| | | | | | | | | | | | ASB40010 |
| Azide Dextrose Broth | | | | | | | | | | | |
| ADB20500 | ADB25000 | ADB210000 | ADB225000 | ADB250000 | ADB30100 | ADB30500 | | | | | ADB40010 |
| Azide Dextrose Broth, Rothe | | | | | | | | | | | |
| ADR20500 | ADR25000 | ADR210000 | ADR225000 | ADR250000 | ADR30100 | ADR30500 | | | | | ADR40010 |
| Bacillus Cereus (PEMBA) Agar Base | | | | | | | | | | | |
| Supplement: Sterile Egg Yolk Polymyxin (PREP) Emulsion | | | | | | | | | | | |
| BCA20500 | BCA25000 | BCA210000 | BCA225000 | BCA250000 | BCA30100 | BCA30500 | | | | | |

* In case of tubes the last figures of code numbers indicate volumes (ml) of media, minimum order is 50 pieces from the same type.

** In case of plates the minimum order is 10 pieces (90 mm) or 20 pieces (55 mm).

| NAME | | | | | | | | | | | |
|-------|---------|----------|----------|----------|--------|--------|--------------------|--------------------|--------------------|------------------|------------------|
| 500 g | 5 000 g | 10 000 g | 25 000 g | 50 000 g | 100 ml | 500 ml | tube* 100x12 mm | tube* 100x15 mm | tube* 150x15 mm | plate** 55 mm | plate** 90 mm |

| Bacillus Cereus (PEMBA) Agar | | | | | | | | | | | | Supplement: Sterile Egg Yolk Polymyxin (PEMBA) Emulsion | |
|--|----------|-----------|-----------|-----------|----------|----------|--|--|----------|----------|----------|--|--|
| | | | | | | | | | | BCA50055 | BCA50090 | | |
| Bacillus Cereus (PREP) Agar Base | | | | | | | | | | | | | |
| BPR20500 | BPR25000 | BPR210000 | BPR225000 | BPR250000 | BPR30100 | BPR30500 | | | | BRP50055 | BRP50090 | | |
| Bacillus Cereus (PREP) Agar | | | | | | | | | | | | Supplement: Sterile Egg Yolk Polymyxin (PREP) Emulsion | |
| | | | | | | | | | | BPR50055 | BPR50090 | | |
| Bacteroides Bile Esculin Agar | | | | | | | | | | | | | |
| BBE20500 | BBE25000 | BBE210000 | BBE225000 | BBE250000 | BBE30100 | BBE30500 | | | | BBE50055 | BBE50090 | | |
| BAGG Broth Base | | | | | | | | | | | | | |
| BAG20500 | BAG25000 | BAG210000 | BAG225000 | BAG250000 | | | | | | | | | |
| BAGG Broth | | | | | | | | | | | | Supplement: Glycerol Supplement | |
| | | | | | BAG30100 | BAG30500 | | | BAG40010 | | | | |
| Baird-Parker Agar Base, ISO | | | | | | | | | | | | Supplement: Sterile Egg Yolk Tellurite Emulsion | |
| BPI20500 | BPI25000 | BPI210000 | BPI225000 | BPI250000 | BPI30100 | BPI30500 | | | | BPI50055 | BPI50090 | | |
| Baird-Parker Agar Base, PH EUR | | | | | | | | | | | | | |
| BPA20500 | BPA25000 | BPA210000 | BPA225000 | BPA250000 | BPA30100 | BPA30500 | | | | | | | |
| Baird-Parker Agar, PH EUR | | | | | | | | | | | | Supplement: Sterile Egg Yolk Tellurite Emulsion | |
| | | | | | | | | | | BPA50055 | BPA50090 | | |
| Baird-Parker Broth Base | | | | | | | | | | | | | |
| BBR20500 | BBR25000 | BBR210000 | BBR225000 | BBR250000 | BBR30100 | BBR30500 | | | | | | | |
| Baird-Parker Broth | | | | | | | | | | | | Supplement: Sterile Egg Yolk Tellurite Emulsion | |
| | | | | | | | | | BBR40010 | | | | |
| BAT Agar | | | | | | | | | | | | | |
| BTA20500 | BTA25000 | BTA210000 | BTA225000 | BTA250000 | BTA30100 | BTA30500 | | | | BTA50055 | BTA50090 | | |
| Bile Esculin Agar | | | | | | | | | | | | | |
| BEA20500 | BEA25000 | BEA210000 | BEA225000 | BEA250000 | BEA30100 | BEA30500 | | | | BEA50055 | BEA50090 | | |
| Bile Esculin Azide Agar | | | | | | | | | | | | | |
| BES20500 | BES25000 | BES210000 | BES225000 | BES250000 | BES30100 | BES30500 | | | | BES50055 | BES50090 | | |
| Bile Esculin Azide Broth | | | | | | | | | | | | | |
| BIB20500 | BIB25000 | BIB210000 | BIB225000 | BIB250000 | BIB30100 | BIB30500 | | | BIB40010 | | | | |
| Bile Esculin Broth | | | | | | | | | | | | | |
| BEB20500 | BEB25000 | BEB210000 | BEB225000 | BEB250000 | BEB30100 | BEB30500 | | | BEB40010 | | | | |
| Bismuth Sulphite Agar (agar base+indicator) KIT | | | | | | | | | | | | | |
| BSA20450 | BSA24500 | BSA210000 | BSA225000 | BSA250000 | BSA30100 | BSA30500 | | | | | | | |
| Bismuth Sulphite Agar | | | | | | | | | | | | | |
| | | | | | | | | | | BSA50055 | BSA50090 | | |
| Blood Agar Base | | | | | | | | | | | | | |
| BAN20500 | BAN25000 | BAN210000 | BAN225000 | BAN250000 | BAN30100 | BAN30500 | | | | | | | |
| Blood Agar | | | | | | | | | | | | Supplement: Defibrinated Blood | |
| | | | | | | | | | | BAN50055 | BAN50090 | | |
| Blood Agar Base No.2 | | | | | | | | | | | | | |
| BAL20500 | BAL25000 | BAL210000 | BAL225000 | BAL250000 | BAL30100 | BAL30500 | | | | | | | |

| NAME | | | | | | | | | | | |
|-------|---------|----------|----------|----------|--------|--------|--------------------|--------------------|--------------------|------------------|------------------|
| 500 g | 5 000 g | 10 000 g | 25 000 g | 50 000 g | 100 ml | 500 ml | tube* 100x12 mm | tube* 100x15 mm | tube* 150x15 mm | plate** 55 mm | plate** 90 mm |

| Blood agar Base No. 2. ISO | | | | | | | | | | | | | |
|--|----------|-----------|-----------|-----------|----------|----------|--|--|----------|-------------|-------------|---|--|
| BAI20500 | BAI25000 | BAI210000 | BAI225000 | BAI250000 | BAI30100 | BAI30500 | | | | | | | |
| Blood Agar No.2 | | | | | | | | | | | | Supplement: Defibrinated Blood | |
| | | | | | | | | | | BAL50055 | BAL50090 | | |
| Blue Agar | | | | | | | | | | | | | |
| BLU20500 | BLU25000 | BLU210000 | BLU225000 | BLU250000 | BLU30100 | BLU30500 | | | | BLU50055 | BLU50090 | | |
| Blue Broth | | | | | | | | | | | | | |
| BLB20500 | BLB25000 | BLB210000 | BLB225000 | BLB250000 | BLB30100 | BLB30500 | | | BLB40010 | | | | |
| Bolton Broth Base | | | | | | | | | | | | | |
| BOB20500 | BOB25000 | BOB210000 | BOB225000 | BOB250000 | BOB30100 | BOB30500 | | | | | | | |
| Bolton Broth | | | | | | | | | | | | Supplement: Lysed Horse Blood + Campylobacter Selective Supplement, Bolton | |
| | | | | | | | | | BOB40010 | | | | |
| Bordatella Agar- From Active Coal Agar Base | | | | | | | | | | | | Supplement: Bordatella Selective Supplement | |
| | | | | | | | | | | | CHA50090-BO | | |
| Brain Heart Infusion Agar | | | | | | | | | | | | | |
| BHA20500 | BHA25000 | BHA210000 | BHA225000 | BHA250000 | BHA30100 | BHA30500 | | | | BHA50055 | BHA50090 | | |
| Vancomycin Screen Agar | | | | | | | | | | | | Supplement: Vancomycin (3 mg) Supplement | |
| | | | | | | | | | | BHA50055-01 | BHA50090-01 | | |
| Brain Heart Infusion Broth | | | | | | | | | | | | | |
| BHI20500 | BHI25000 | BHI210000 | BHI225000 | BHI250000 | BHI30100 | BHI30500 | | | BHI40010 | | | | |
| Brilliant Green Agar Base, Modified | | | | | | | | | | | | | |
| BGM20500 | BGM25000 | BGM210000 | BGM225000 | BGM250000 | BGM30100 | BGM30500 | | | | | | | |
| Brilliant Green Agar, Modified | | | | | | | | | | | | Supplement: Sulphamandate Selective Supplement | |
| | | | | | | | | | | BGM50055 | BGM50090 | | |
| Brilliant Green (BPLS) Agar, PH EUR | | | | | | | | | | | | | |
| BPE20500 | BPE25000 | BPE210000 | BPE225000 | BPE250000 | BPE30100 | BPE30500 | | | | BPE50055 | BPE50090 | | |
| Brilliant Green Agar Base, Human | | | | | | | | | | | | | |
| BGH20500 | BGH25000 | BGH210000 | BGH225000 | BGH250000 | BGH30100 | BGH30500 | | | | | | | |
| Brilliant Green Agar, Human | | | | | | | | | | | | Supplement: Brilliant Green Solution, Sterile | |
| | | | | | | | | | | | BGH50090 | | |
| Brilliant Green Bile (2%) Broth | | | | | | | | | | | | | |
| BBE20500 | BBE25000 | BBE210000 | BBE225000 | BBE250000 | BBE30100 | BBE30500 | | | | | | | |
| Brilliant Green Bile (2%) Broth + Durham Tube | | | | | | | | | | | | | |
| | | | | | | | | | BBB40010 | | | | |
| Brolac Agar | | | | | | | | | | | | | |
| BRO20500 | BRO25000 | BRO210000 | BRO225000 | BRO250000 | BRO30100 | BRO30500 | | | | BRO50055 | BRO50090 | | |
| Bromocresol Purple Glucose Agar | | | | | | | | | | | | | |
| BPD20500 | BPD25000 | BPD210000 | BPD225000 | BPD250000 | BPD30100 | BPD30500 | | | | BPD50055 | BPD50090 | | |
| Bromocresol Purple Lactose Agar | | | | | | | | | | | | | |
| BPL20500 | BPL25000 | BPL210000 | BPL225000 | BPL250000 | BPL30100 | BPL30500 | | | | BPL50055 | BPL50090 | | |
| Bromocresol Purple Azide Broth Base | | | | | | | | | | | | | |
| BCB20500 | BCB25000 | BCB210000 | BCB225000 | BCB250000 | | | | | | | | | |

* In case of tubes the last figures of code numbers indicate volumes (ml) of media, minimum order is 50 pieces from the same type.

** In case of plates the minimum order is 10 pieces (90 mm) or 20 pieces (55 mm).

| NAME | | | | | | | | | | | |
|-------|---------|----------|----------|----------|--------|--------|--------------------|--------------------|--------------------|------------------|------------------|
| 500 g | 5 000 g | 10 000 g | 25 000 g | 50 000 g | 100 ml | 500 ml | tube* 100x12 mm | tube* 100x15 mm | tube* 150x15 mm | plate** 55 mm | plate** 90 mm |

| | | | | | | | | | | | | |
|--|----------|-----------|-----------|-----------|--|----------|--|--|--|----------|-------------|-------------|
| Bromocresol Purple Azide Broth | | | | | Supplement: Glycerol Supplement | | | | | | | |
| | | | | | BCB30100 | BCB30500 | | | | BCB40010 | | |
| Bruceella Agar Base | | | | | | | | | | | | |
| BAB20500 | BAB25000 | BAB210000 | BAB225000 | BAB250000 | BAB30100 | BAB30500 | | | | | | |
| Bruceella Agar | | | | | Supplement: Bruceella Selective Supplement | | | | | | | |
| | | | | | | | | | | BAB50055 | BAB50090 | |
| Bruceella Agar Base + Hemin + Vitamin K | | | | | | | | | | | | |
| BHK20500 | BHK25000 | BHK210000 | BHK225000 | BHK250000 | BHK30100 | BHK30500 | | | | | | |
| Bruceella Agar + Hemin + Vitamin K | | | | | Supplement: Defibrinated Sheep Blood | | | | | | | |
| | | | | | | | | | | BHK50055 | BHK50090 | |
| Bruceella Broth | | | | | | | | | | | | |
| BRB20500 | BRB25000 | BRB210000 | BRB225000 | BRB250000 | BRB30100 | BRB30500 | | | | | BRB40010 | |
| Bryant-Burkey Broth (broth base + supplement) KIT | | | | | | | | | | | | |
| BBA20500 | BBA25000 | BBA210000 | BBA225000 | BBA250000 | | | | | | | | |
| Bryant-Burkey Broth | | | | | | | | | | | | |
| | | | | | | | | | | | BBA40010 | |
| Burkholderia (BCSA) Agar | | | | | | | | | | | | |
| BUA20500 | BUA25000 | BUA210000 | BUA225000 | BUA250000 | BUA30100 | BUA30500 | | | | | BUA50055 | BUA50090 |
| Campylobacter Agar Base | | | | | Supplement: Sterile Lysed Horse Blood + Campylobacter Growth Sup. + Campylobacter Selective Sup., Blaser-Wang | | | | | | | |
| CAA20500 | CAA25000 | CAA210000 | CAA225000 | CAA250000 | CAA30100 | CAA30500 | | | | | CAA50055-BW | CAA50090-BW |
| Campylobacter Agar, Preston | | | | | Supplement: Sterile Lysed Horse Blood + Campylobacter Growth Sup. + Campylobacter Selective Sup., Preston | | | | | | | |
| | | | | | | | | | | | CAA50055-PR | CAA50090-PR |
| Campylobacter Agar, Skirrow | | | | | Supplement: Sterile Lysed Horse Blood + Campylobacter Growth Sup. + Campylobacter Selective Sup., Skirrow | | | | | | | |
| | | | | | | | | | | | CAA50055-SR | CAA50090-SR |
| Campylobacter Agar Base, Karmali | | | | | | | | | | | | |
| CAK20500 | CAK25000 | CAK210000 | CAK225000 | CAK250000 | CAK30100 | CAK30500 | | | | | | |
| Campylobacter Agar, Karmali | | | | | Supplement: Campylobacter Selective Supplement, Karmali | | | | | | | |
| | | | | | | | | | | | CAK50055 | CAK50090 |
| Campylobacter Blood-free (CCDA) Agar Base | | | | | | | | | | | | |
| CCA20500 | CCA25000 | CCA210000 | CCA225000 | CCA250000 | CCA30100 | CCA30500 | | | | | | |
| Campylobacter Blood-free (CCDA) Agar | | | | | Supplement: Campylobacter Selective Supplement, CCDA | | | | | | | |
| | | | | | | | | | | | CCA50055 | CCA50090 |
| Casein Peptone Lecithin Polysorbate Broth Base, USP | | | | | | | | | | | | |
| CLP20500 | CLP25000 | CLP210000 | CLP225000 | CLP250000 | | | | | | | | |
| Casein Peptone Lecithin Polysorbate Broth, USP | | | | | Supplement: TWEEN 80 Supplement | | | | | | | |
| | | | | | CLP30100 | CLP30500 | | | | | | |
| CATC Agar Base | | | | | | | | | | | | |
| CAT20500 | CAT25000 | CAT210000 | CAT225000 | CAT250000 | CAT30100 | CAT30500 | | | | | | |
| CATC Agar | | | | | Supplement: TTC Solution, Sterile | | | | | | | |
| | | | | | | | | | | | CAT50055 | CAT50090 |

* In case of tubes the last figures of code numbers indicate volumes (ml) of media, minimum order is 50 pieces from the same type.

** In case of plates the minimum order is 10 pieces (90 mm) or 20 pieces (55 mm).

| NAME | | | | | | | | | | | | | |
|-------|---------|----------|----------|----------|--------|--------|--------------------|--------------------|--------------------|------------------|------------------|--|--|
| 500 g | 5 000 g | 10 000 g | 25 000 g | 50 000 g | 100 ml | 500 ml | tube* 100x12 mm | tube* 100x15 mm | tube* 150x15 mm | plate** 55 mm | plate** 90 mm | | |

| | | | | | | | | | | | | | |
|---|----------|-----------|-----------|-----------|--|----------|----------|----------|--|--|--|-------------|-------------|
| Cetrimide Agar Base, PH EUR - USP | | | | | | | | | | | | | |
| CAB20500 | CAB25000 | CAB210000 | CAB225000 | CAB250000 | | | | | | | | | |
| Cetrimide Agar, PH EUR - USP | | | | | Supplement: Glycerol Supplement | | | | | | | | |
| | | | | | | | | | | | | CAB50055 | CAB50090 |
| Cetrimide (CN) Agar Base | | | | | | | | | | | | | |
| CCN20500 | CCN25000 | CCN210000 | CCN225000 | CCN250000 | | | | | | | | | |
| Cetrimide (CN) Agar | | | | | Supplement: Glycerol Supplement | | | | | | | | |
| | | | | | CCN30100 | CCN30500 | | | | | | CCN50055 | CCN50090 |
| Cetrimide Agar Base No.2 | | | | | | | | | | | | | |
| CCT20500 | CCT25000 | CCT210000 | CCT225000 | CCT250000 | | | | | | | | | |
| Cetrimide Agar Base No.2 | | | | | Supplement: Glycerol Supplement. To be added: Pseudomonas Selective Supplement, CN or CFC | | | | | | | | |
| | | | | | | | CCT30100 | CCT30500 | | | | | |
| Cetrimide Agar Base No.2 | | | | | Supplement: Glycerol Supplement + Pseudomonas Selective Supplement, CN | | | | | | | | |
| | | | | | | | | | | | | CCT50055-01 | CCT50090-01 |
| Cetrimide Agar Base No.2 | | | | | Supplement: Glycerol Supplement + Pseudomonas Selective Supplement, CFC | | | | | | | | |
| | | | | | | | | | | | | CCT50055-02 | CCT50090-02 |
| Cetrimide Agar Base No.2 | | | | | Supplement: Glycerol Supplement + Pseudomonas Selective Supplement, PP | | | | | | | | |
| | | | | | | | | | | | | CCT50055-03 | CCT50090-03 |
| Cetrimide Broth Base | | | | | Supplement: Glycerol Supplement | | | | | | | | |
| CBB20500 | CBB25000 | CBB210000 | CBB225000 | CBB250000 | CBB30100 | CBB30500 | | | | | | CBB40010 | |
| Charcoal Agar Base | | | | | | | | | | | | | |
| CHA20500 | CHA25000 | CHA210000 | CHA225000 | CHA250000 | CHA30100 | CHA30500 | | | | | | | |
| China Blue Lactose Agar | | | | | | | | | | | | | |
| CBA20500 | CBA25000 | CBA210000 | CBA225000 | CBA250000 | CBA30100 | CBA30500 | | | | | | CBA50055 | CBA50090 |
| Chloramphenicol Glucose Agar | | | | | | | | | | | | | |
| CGA20500 | CGA25000 | CGA210000 | CGA225000 | CGA250000 | CGA30100 | CGA30500 | | | | | | CGA50055 | CGA50090 |
| Chocolate Agar (agar base+supplement) KIT | | | | | | | | | | | | | |
| CHO20500 | CHO25000 | CHO210000 | CHO225000 | CHO250000 | CHO30100 | CHO30500 | | | | | | | |
| Chocolate Agar with Growth Factor Mixture | | | | | Supplement: Defibrinated Blood + Growth Factor Mixture | | | | | | | | |
| | | | | | | | | | | | | CHO50055-02 | CHO50090-02 |
| Chocolate Agar with Growth Factor Mixture + Bacitracin | | | | | Supplement: Defibrinated Blood + Growth Factor Mixture + Bacitracin (150 mg) Supplement | | | | | | | | |
| | | | | | | | | | | | | CHO50055-03 | CHO50090-03 |
| Chocolate Agar with Growth Factor Mixture + Vancomycin | | | | | Supplement: Defibrinated Blood + Growth Factor Mixture + Vancomycin (13 mg) Supplement | | | | | | | | |
| | | | | | | | | | | | | CHO50055-04 | CHO50090-04 |
| ChromoBio® Candida | | | | | | | | | | | | | |
| CAN20500 | CAN25000 | CAN210000 | CAN225000 | CAN250000 | CAN30100 | CAN30500 | | | | | | CAN50055 | CAN50090 |
| ChromoBio® Cereus (base + supplement) KIT | | | | | | | | | | | | | |
| CER20500 | CER25000 | CER210000 | CER225000 | CER250000 | CER30100 | CER30500 | | | | | | | |
| ChromoBio® Cereus | | | | | | | | | | | | | |
| | | | | | | | | | | | | CER50055 | CER50090 |
| ChromoBio® Coliform ES | | | | | Supplement: Coliform Selective Supplement | | | | | | | | |
| | | | | | | | | | | | | COF50055-EN | COF50090-EN |

| NAME | | | | | | | | | | | |
|-------|---------|----------|----------|----------|--------|--------|--------------------|--------------------|--------------------|------------------|------------------|
| 500 g | 5 000 g | 10 000 g | 25 000 g | 50 000 g | 100 ml | 500 ml | tube* 100x12 mm | tube* 100x15 mm | tube* 150x15 mm | plate** 55 mm | plate** 90 mm |

| | | | | | | | | | | | |
|--|----------|-----------|-----------|-----------|----------|----------|--|--|----------|----------|----------|
| ChromoBio® Coliform | | | | | | | | | | | |
| COF20500 | COF25000 | COF210000 | COF225000 | COF250000 | COF30100 | COF30500 | | | | COF50055 | COF50090 |
| ChromoBio® Enterococcus Agar | | | | | | | | | | | |
| CEA20500 | CEA25000 | CEA210000 | CEA225000 | CEA250000 | CEA30100 | CEA30500 | | | | CEA50055 | CEA50090 |
| ChromoBio® Enterococcus Broth | | | | | | | | | | | |
| CEB20500 | CEB25000 | CEB210000 | CEB225000 | CEB250000 | CEB30100 | CEB30500 | | | CEB40010 | | |
| ChromoBio® Listeria (agar base+ liquid supplement+ selective supplement) KIT | | | | | | | | | | | |
| ALO20500 | ALO25000 | ALO210000 | ALO225000 | ALO250000 | ALO30100 | ALO30500 | | | | | |
| ChromoBio® Listeria | | | | | | | | | | | |
| | | | | | | | | | | ALO50055 | ALO50090 |
| ChromoBio® Listeria Plus (agar base+ liquid supplement+ selective supplement) KIT | | | | | | | | | | | |
| LCA20500 | LCA25000 | LCA210000 | LCA225000 | LCA250000 | LCA30100 | LCA30500 | | | | | |
| ChromoBio® Listeria Plus | | | | | | | | | | | |
| | | | | | | | | | | LCA50055 | LCA50090 |
| ChromoBio® LMX | | | | | | | | | | | |
| LMX20500 | LMX25000 | LMX210000 | LMX225000 | LMX250000 | LMX30100 | LMX30500 | | | LMX40010 | | |
| ChromoBio® M-CP Base | | | | | | | | | | | |
| MCP20500 | MCP25000 | MCP210000 | MCP225000 | MCP250000 | MCP30100 | MCP30500 | | | | | |
| ChromoBio® M-CP Supplement: M-CP Chromogenic and Selective Supplement | | | | | | | | | | | |
| | | | | | | | | | | MCP50055 | MCP50090 |
| ChromoBio® MLGA | | | | | | | | | | | |
| MLG20500 | MLG25000 | MLG210000 | MLG225000 | MLG250000 | MLG30100 | MLG30500 | | | | MLG50055 | MLG50090 |
| ChromoBio® MRSA (agar base + supplement) KIT | | | | | | | | | | | |
| CMR20500 | CMR25000 | CMR210000 | CMR225000 | CMR250000 | CMR30100 | CMR30500 | | | | | |
| ChromoBio® Salmonella Base | | | | | | | | | | | |
| SAL20500 | SAL25000 | SAL210000 | SAL225000 | SAL250000 | SAL30100 | SAL30500 | | | | | |
| ChromoBio® Salmonella Supplement: Salmonella Selective Supplement | | | | | | | | | | | |
| | | | | | | | | | | SAL50055 | SAL50090 |
| ChromoBio® Salmonella Plus Base | | | | | | | | | | | |
| SAP20500 | SAP25000 | SAP210000 | SAP225000 | SAP250000 | SAP30100 | SAP30500 | | | | | |
| ChromoBio® Salmonella Plus Supplement: Salmonella Plus Selective Supplement | | | | | | | | | | | |
| | | | | | | | | | | SAP50055 | SAP50090 |
| ChromoBio® Staphylococcus | | | | | | | | | | | |
| STP20500 | STP25000 | STP210000 | STP225000 | STP250000 | STP30100 | STP30500 | | | | STP50055 | STP50090 |
| Chromobio Strep B | | | | | | | | | | | |
| CSB20500 | CSB25000 | CSB210000 | CSB225000 | CSB250000 | CSB30100 | CSB30500 | | | | CSB50055 | CSB50090 |
| ChromoBio® TBX | | | | | | | | | | | |
| TBX20500 | TBX25000 | TBX210000 | TBX225000 | TBX250000 | TBX30100 | TBX30500 | | | | TBX50055 | TBX50090 |
| ChromoBio® UTI | | | | | | | | | | | |
| URN20500 | URN25000 | URN210000 | URN225000 | URN250000 | URN30100 | URN30500 | | | | URN50055 | URN50090 |
| Clausen Medium Base | | | | | | | | | | | |
| CLB20500 | CLB25000 | CLB210000 | CLB225000 | CLB250000 | | | | | | | |

* In case of tubes the last figures of code numbers indicate volumes (ml) of media, minimum order is 50 pieces from the same type.

** In case of plates the minimum order is 10 pieces (90 mm) or 20 pieces (55 mm).

| NAME | | | | | | | | | | | |
|-------|---------|----------|----------|----------|--------|--------|--------------------|--------------------|--------------------|------------------|------------------|
| 500 g | 5 000 g | 10 000 g | 25 000 g | 50 000 g | 100 ml | 500 ml | tube* 100x12 mm | tube* 100x15 mm | tube* 150x15 mm | plate** 55 mm | plate** 90 mm |

| | | | | | | | | | | | |
|--|----------|-----------|-----------|-----------|----------|----------|--|--|----------|-------------|-------------|
| Clausen Medium Supplement: Glycerol Supplement + TWEEN 80 Supplement | | | | | | | | | | | |
| | | | | | CLB30100 | CLB30500 | | | CLB40010 | | |
| CLED Agar | | | | | | | | | | | |
| CLA20500 | CLA25000 | CLA210000 | CLA225000 | CLA250000 | CLA30100 | CLA30500 | | | | CLA50055 | CLA50090 |
| CLED Agar with Andrade Indicator | | | | | | | | | | | |
| CLD20500 | CLD25000 | CLD210000 | CLD225000 | CLD250000 | CLD30100 | CLD30500 | | | | CLD50055 | CLD50090 |
| Clostridium Difficile Agar Base | | | | | | | | | | | |
| CDA20500 | CDA25000 | CDA210000 | CDA225000 | CDA250000 | CDA30100 | CDA30500 | | | | | |
| Clostridium Difficile Agar Supplement: Clostridium Selective Supplement + Defibrinated Blood | | | | | | | | | | | |
| | | | | | | | | | | CDA50055 | CDA50090 |
| Clostridium Difficile (CCFA) Agar Base | | | | | | | | | | | |
| CCF20500 | CCF25000 | CCF210000 | CCF225000 | CCF250000 | CCF30100 | CCF30500 | | | | | |
| Clostridium Difficile (CCFA) Agar Supplement: Clostridium Selective Supplement | | | | | | | | | | | |
| | | | | | | | | | | CCF50055 | CCF50090 |
| CM Broth for Aerobe Enrichment | | | | | | | | | | | |
| | | | | | | | | | CMA40010 | | |
| CM Broth for Anaerobe Enrichment | | | | | | | | | | | |
| | | | | | | | | | CMB40010 | | |
| Columbia Blood Agar Base | | | | | | | | | | | |
| COL20500 | COL25000 | COL210000 | COL225000 | COL250000 | COL30100 | COL30500 | | | | | |
| Columbia Blood Agar Supplement: Defibrinated Blood | | | | | | | | | | | |
| | | | | | | | | | | COL50055 | COL50090 |
| Columbia Blood Agar with Ampicillin Supplement: Defibrinated Blood + Ampicillin (5 mg) Supplement | | | | | | | | | | | |
| | | | | | | | | | | COL50055-AM | COL50090-AM |
| Columbia Blood Agar with Esculin Supplement: Defibrinated Blood + Esculin | | | | | | | | | | | |
| | | | | | | | | | | COL50055-ES | COL50090-ES |
| Gardnerella Selective Agar Supplement: Defibrinated Blood + Gardnerella Selective Supplement | | | | | | | | | | | |
| | | | | | | | | | | COL50055-GA | COL50090-GA |
| Columbia Agar, PH EUR – USP | | | | | | | | | | | |
| CLE20500 | CLE25000 | CLE210000 | CLE225000 | CLE250000 | CLE30100 | CLE30500 | | | | CLE50055 | CLE50090 |
| Columbia CNA Agar Base | | | | | | | | | | | |
| CNA20500 | CNA25000 | CNA210000 | CNA225000 | CNA250000 | CNA30100 | CNA30500 | | | | | |
| Columbia CNA Agar Supplement: Defibrinated Blood | | | | | | | | | | | |
| | | | | | | | | | | CNA50055 | CNA50090 |
| Copper Sulfate Agar | | | | | | | | | | | |
| CSA20500 | CSA25000 | CSA210000 | CSA225000 | CSA250000 | CSA30100 | CSA30500 | | | | | |
| Czapek-Dox Agar | | | | | | | | | | | |
| CZA20500 | CZA25000 | CZA210000 | CZA225000 | CZA250000 | CZA30100 | CZA30500 | | | | CZA50055 | CZA50090 |
| Czapek Yeast Extract Agar | | | | | | | | | | | |
| CYA20500 | CYA25000 | CYA210000 | CYA225000 | CYA250000 | CYA30100 | CYA30500 | | | | CYA50055 | CYA50090 |
| Decarboxylase Broth Base, Falkow See: Falkow Broth Base | | | | | | | | | | | |
| | | | | | | | | | | | |

| NAME | | | | | | | | | | | |
|-------|---------|----------|----------|----------|--------|--------|--------------------|--------------------|--------------------|------------------|------------------|
| 500 g | 5 000 g | 10 000 g | 25 000 g | 50 000 g | 100 ml | 500 ml | tube* 100x12 mm | tube* 100x15 mm | tube* 150x15 mm | plate** 55 mm | plate** 90 mm |

| Deoxycholate Citrate Agar | | | | | | | | | | | |
|---|----------|-----------|-----------|-----------|----------|----------|----------|----------|--|----------|----------|
| DCD20500 | DCD25000 | DCD210000 | DCD225000 | DCD250000 | DCD30100 | DCD30500 | | | | DCD50055 | DCD50090 |
| Deoxycholate Citrate Agar, Hynes | | | | | | | | | | | |
| DCH20500 | DCH25000 | DCH210000 | DCH225000 | DCH250000 | DCH30100 | DCH30500 | | | | DCH50055 | DCH50090 |
| Deoxycholate Citrate Agar, Leifson | | | | | | | | | | | |
| DCC20500 | DCC25000 | DCC210000 | DCC225000 | DCC250000 | DCC30100 | DCC30500 | | | | DCC50055 | DCC50090 |
| Deoxycholate Citrate Agar, PH EUR | | | | | | | | | | | |
| DCE20500 | DCE25000 | DCE210000 | DCE225000 | DCE250000 | DCE30100 | DCE30500 | | | | DCE50055 | DCE50090 |
| Deoxycholate Lactose Agar | | | | | | | | | | | |
| DCL20500 | DCL25000 | DCL210000 | DCL225000 | DCL250000 | DCL30100 | DCL30500 | | | | DCL50055 | DCL50090 |
| Dextrose Broth | | | | | | | | | | | |
| DEB20500 | DEB25000 | DEB210000 | DEB225000 | DEB250000 | DEB30100 | DEB30500 | DEB40001 | DEB40005 | | | |
| Dextrose Tryptone Agar | | | | | | | | | | | |
| DTR20500 | DTR25000 | DTR210000 | DTR225000 | DTR250000 | DTR30100 | DTR30500 | | | | DTR50055 | DTR50090 |
| Dextrose Tryptone Broth | | | | | | | | | | | |
| DTB20500 | DTB25000 | DTB210000 | DTB225000 | DTB250000 | DTB30100 | DTB30500 | | DTB40010 | | | |
| DG18 Agar Base | | | | | | | | | | | |
| D1820500 | D1825000 | D18210000 | D18225000 | D18250000 | | | | | | | |
| DG18 Agar Supplement: Glycerol Supplement | | | | | | | | | | | |
| | | | | | D1830100 | D1830500 | | | | D1850055 | D1850090 |
| Diagnostic Sensitivity Test Agar | | | | | | | | | | | |
| DST20500 | DST25000 | DST210000 | DST225000 | DST250000 | DST30100 | DST30500 | | | | | DST50090 |
| Diasalm Medium (medium base+supplement) KIT | | | | | | | | | | | |
| DIM20500 | DIM25000 | DIM210000 | DIM225000 | DIM250000 | | | | | | | |
| Diasalm Medium Sup.: DIASALM-MSRV Magnesium Chloride Solution. To be added: Novobiocin (5mg) Supplement | | | | | | | | | | | |
| | | | | | DIM30100 | DIM30500 | | | | | |
| DNase Agar | | | | | | | | | | | |
| DNA20500 | DNA25000 | DNA210000 | DNA225000 | DNA250000 | DNA30100 | DNA30500 | | | | DNA50055 | DNA50090 |
| DNase Agar with Mannitol | | | | | | | | | | | |
| DNM20500 | DNM25000 | DNM210000 | DNM225000 | DNM250000 | DNM30100 | DNM30500 | | | | DNM50055 | DNM50090 |
| DNase Agar with Methyl Green | | | | | | | | | | | |
| DNG20500 | DNG25000 | DNG210000 | DNG225000 | DNG250000 | DNG30100 | DNG30500 | | | | DNG50055 | DNG50090 |
| DNase Agar with Toluidine Blue | | | | | | | | | | | |
| DNT20500 | DNT25000 | DNT210000 | DNT225000 | DNT250000 | DNT30100 | DNT30500 | | | | DNT50055 | DNT50090 |
| Drigalski Glucose Agar | | | | | | | | | | | |
| DAC20500 | DAC25000 | DAC210000 | DAC225000 | DAC250000 | DAC30100 | DAC30500 | | | | DAC50055 | DAC50090 |
| Drigalski Lactose Agar | | | | | | | | | | | |
| DAS20500 | DAS25000 | DAS210000 | DAS225000 | DAS250000 | DAS30100 | DAS30500 | | | | DAS50055 | DAS50090 |
| DTM Agar Base | | | | | | | | | | | |
| DTM20500 | DTM25000 | DTM210000 | DTM225000 | DTM250000 | DTM30100 | DTM30500 | | | | | |
| DTM Agar Supplement: DTM Selective Supplement | | | | | | | | | | | |
| | | | | | | | | | | DTM50055 | DTM50090 |

| NAME | | | | | | | | | | | |
|-------|---------|----------|----------|----------|--------|--------|--------------------|--------------------|--------------------|------------------|------------------|
| 500 g | 5 000 g | 10 000 g | 25 000 g | 50 000 g | 100 ml | 500 ml | tube* 100x12 mm | tube* 100x15 mm | tube* 150x15 mm | plate** 55 mm | plate** 90 mm |

| EC Broth | | | | | | | | | | | |
|---|----------|-----------|-----------|-----------|----------|----------|----------|--|----------|----------|----------|
| ECB20500 | ECB25000 | ECB210000 | ECB225000 | ECB250000 | ECB30100 | ECB30500 | | | | | |
| EC Broth + Durham Tube | | | | | | | | | | | |
| | | | | | | | | | | ECB40010 | |
| EE Broth, PH EUR - USP | | | | | | | | | | | |
| EEB20500 | EEB25000 | EEB210000 | EEB225000 | EEB250000 | EEB30100 | EEB30500 | | | EEB40010 | | |
| Edwards Agar Base | | | | | | | | | | | |
| EDA20500 | EDA25000 | EDA210000 | EDA225000 | EDA250000 | EDA30100 | EDA30500 | | | | | |
| Edwards Agar Supplement: Defibrinated Blood | | | | | | | | | | | |
| | | | | | | | | | | EDA50055 | EDA50090 |
| Elliker Broth | | | | | | | | | | | |
| ELB20500 | ELB25000 | ELB210000 | ELB225000 | ELB250000 | ELB30100 | ELB30500 | | | ELB40010 | | |
| Endo Agar (agar base+ endo basic fuchsin solution) KIT | | | | | | | | | | | |
| END20500 | END25000 | END210000 | END225000 | END250000 | | | | | | | |
| Endo Agar | | | | | | | | | | | |
| | | | | | END30100 | END30500 | | | | END50055 | END50090 |
| Endo Agar, DEV (agar base+ endo basic fuchsin solution) KIT | | | | | | | | | | | |
| EDE20500 | EDE25000 | EDE210000 | EDE225000 | EDE250000 | | | | | | | |
| Endo Agar, DEV | | | | | | | | | | | |
| | | | | | EDE30100 | EDE30500 | | | | EDE50055 | EDE50090 |
| Endo LES Agar (agar base+ endo basic fuchsin solution) KIT | | | | | | | | | | | |
| ELA20500 | ELA25000 | ELA210000 | ELA225000 | ELA250000 | | | | | | | |
| Endo LES Agar | | | | | | | | | | | |
| | | | | | ELA30100 | ELA30500 | | | | ELA50055 | ELA50090 |
| Endo M Broth Base | | | | | | | | | | | |
| ENB20500 | ENB25000 | ENB210000 | ENB225000 | ENB250000 | | | | | ENB40002 | | |
| Endo M Broth Supplement: Endo Basic Fuchsin Solution | | | | | | | | | | | |
| | | | | | ENB30100 | ENB30500 | ENB40002 | | | | |
| Enterococcus (Litsky-Mallman) Broth See: Ethyl Violet Azide (EVA) Broth | | | | | | | | | | | |
| | | | | | | | | | | | |
| Eosin Methylene Blue Agar, USP | | | | | | | | | | | |
| EMB20500 | EMB25000 | EMB210000 | EMB225000 | EMB250000 | EMB30100 | EMB30500 | | | | EMB50055 | EMB50090 |
| Eosin Methylene Blue Lactose Sucrose Agar | | | | | | | | | | | |
| EMC20500 | EMC25000 | EMC210000 | EMC225000 | EMC250000 | EMC30100 | EMC30500 | | | | EMC50055 | EMC50090 |
| Esculin Agar | | | | | | | | | | | |
| ESA20500 | ESA25000 | ESA210000 | ESA225000 | ESA250000 | ESA30100 | ESA30500 | ESA40003 | | | | |
| Esculin Broth | | | | | | | | | | | |
| ESB20500 | ESB25000 | ESB210000 | ESB225000 | ESB250000 | ESB30100 | ESB30500 | ESB40003 | | | | |
| Ethyl Violet Azide (EVA) Broth | | | | | | | | | | | |
| EVA20500 | EVA25000 | EVA210000 | EVA225000 | EVA250000 | EVA30100 | EVA30500 | | | EVA40010 | | |
| EUGON LT 100 Agar Base | | | | | | | | | | | |
| EUA20500 | EUA25000 | EUA210000 | EUA225000 | EUA250000 | | | | | | | |

* In case of tubes the last figures of code numbers indicate volumes (ml) of media, minimum order is 50 pieces from the same type.

** In case of plates the minimum order is 10 pieces (90 mm) or 20 pieces (55 mm).

| NAME | | | | | | | | | | | |
|-------|---------|----------|----------|----------|--------|--------|--------------------|--------------------|--------------------|------------------|------------------|
| 500 g | 5 000 g | 10 000 g | 25 000 g | 50 000 g | 100 ml | 500 ml | tube* 100x12 mm | tube* 100x15 mm | tube* 150x15 mm | plate** 55 mm | plate** 90 mm |

| | | | | | | | | | | | | | |
|--------------------------------------|-------------|--------------|--------------|--------------|-------------|-------------|-------------|--|----------|----------|----------|--|--|
| EUGON LT 100 Agar | | | | | | | | | | | | Supplement: TWEEN 80 Supplement + TRITON X-100 Supplement | |
| | | | | | EUA30100 | EUA30500 | | | | EUA50055 | EUA50090 | | |
| EUGON LT 100 Broth Base | | | | | | | | | | | | | |
| EUB20500 | EUB25000 | EUB210000 | EUB225000 | EUB250000 | | | | | | | | | |
| EUGON LT 100 Broth | | | | | | | | | | | | Supplement: TWEEN 80 Supplement + TRITON X-100 Supplement | |
| | | | | | EUB30100 | EUB30500 | | | EUB40010 | | | | |
| Falkow Broth Base | | | | | | | | | | | | | |
| DBF20500 | DBF25000 | DBF210000 | DBF225000 | DBF250000 | DBF30100 | DBF30500 | | | | | | | |
| Falkow Broth Base | | | | | | | | | | | | Covered with paraffin oil | |
| | | | | | | | DBF40002 | | | | | | |
| Falkow Broth, Arginine | | | | | | | | | | | | | |
| DBF20500-AR | DBF25000-AR | DBF210000-AR | DBF225000-AR | DBF250000-AR | DBF30100-AR | DBF30500-AR | | | | | | | |
| Falkow Broth, Arginine | | | | | | | | | | | | Covered with paraffin oil | |
| | | | | | | | DBF40002-AR | | | | | | |
| Falkow Broth, Lysine | | | | | | | | | | | | | |
| DBF20500-LY | DBF25000-LY | DBF210000-LY | DBF225000-LY | DBF250000-LY | DBF30100-LY | DBF30500-LY | | | | | | | |
| Falkow Broth, Lysine | | | | | | | | | | | | Covered with paraffin oil | |
| | | | | | | | DBF40002-LY | | | | | | |
| Falkow Broth, Ornithine | | | | | | | | | | | | | |
| DBF20500-OR | DBF25000-OR | DBF210000-OR | DBF225000-OR | DBF250000-OR | DBF30100-OR | DBF30500-OR | | | | | | | |
| Falkow Broth, Ornithine | | | | | | | | | | | | Covered with paraffin oil | |
| | | | | | | | DBF40002-OR | | | | | | |
| FluoroBio® BGLB | | | | | | | | | | | | | |
| BBM20500 | BBM25000 | BBM210000 | BBM225000 | BBM250000 | BBM30100 | BBM30500 | | | | | | | |
| FluoroBio® BGLB + Durham Tube | | | | | | | | | | | | | |
| | | | | | | | | | BBM40010 | | | | |
| FluoroBio® CLED | | | | | | | | | | | | | |
| CLM20500 | CLM25000 | CLM210000 | CLM225000 | CLM250000 | CLM30100 | CLM30500 | | | | CLM50055 | CLM50090 | | |
| FluoroBio® EC | | | | | | | | | | | | | |
| ECM20500 | ECM25000 | ECM210000 | ECM225000 | ECM250000 | ECM30100 | ECM30500 | | | | | | | |
| FluoroBio® EC + Durham Tube | | | | | | | | | | | | | |
| | | | | | | | | | ECM40010 | | | | |
| FluoroBio® ECD | | | | | | | | | | | | | |
| EDM20500 | EDM25000 | EDM210000 | EDM225000 | EDM250000 | EDM30100 | EDM30500 | | | | EDM50055 | EDM50090 | | |
| FluoroBio® LSB | | | | | | | | | | | | | |
| LSM20500 | LSM25000 | LSM210000 | LSM225000 | LSM250000 | LSM30100 | LSM30500 | | | | | | | |
| FluoroBio® LSB + Durham Tube | | | | | | | | | | | | | |
| | | | | | | | | | LSM40010 | | | | |
| FluoroBio® MacConkey Agar | | | | | | | | | | | | | |
| MCM20500 | MCM25000 | MCM210000 | MCM225000 | MCM250000 | MCM30100 | MCM30500 | | | | MCM50055 | MCM50090 | | |
| FluoroBio® MacConkey Broth | | | | | | | | | | | | | |
| MNM20500 | MNM25000 | MNM210000 | MNM225000 | MNM250000 | MNM30100 | MNM30500 | | | | | | | |

| NAME | | | | | | | | | | | |
|-------|---------|----------|----------|----------|--------|--------|--------------------|--------------------|--------------------|------------------|------------------|
| 500 g | 5 000 g | 10 000 g | 25 000 g | 50 000 g | 100 ml | 500 ml | tube* 100x12 mm | tube* 100x15 mm | tube* 150x15 mm | plate** 55 mm | plate** 90 mm |

| | | | | | | | | | | | | | |
|---|----------|-----------|-----------|-----------|----------|----------|----------|--|----------|-------------|-------------|---|--|
| FluoroBio® MacConkey Broth + Durham Tube | | | | | | | | | | | | | |
| | | | | | | | | | MNM40010 | | | | |
| FluoroBio® VRBL | | | | | | | | | | | | | |
| VBM20500 | VBM25000 | VBM210000 | VBM225000 | VBM250000 | VBM30100 | VBM30500 | | | | VBM50055 | VBM50090 | | |
| GBS Agar Base | | | | | | | | | | | | | |
| GBS20500 | GBS25000 | GBS210000 | GBS225000 | GBS250000 | GBS30100 | GBS30500 | | | | | | | |
| GBS Agar | | | | | | | | | | | | Supplement: Inactivated Horse Serum | |
| | | | | | | | | | | GBS50055 | GBS50090 | | |
| GC Agar (agar base+supplement) KIT | | | | | | | | | | | | Supplement: Defibrinated Blood | |
| GCA20500 | GCA25000 | GCA210000 | GCA225000 | GCA250000 | GCA30100 | GCA30500 | | | | GCA50055-01 | GCA50090-01 | | |
| Thayer-Martin Agar | | | | | | | | | | | | Supplement: Defibrinated Blood + Growth Factor Mixture | |
| | | | | | | | | | | | GCA50090-01 | | |
| Thayer-Martin Agar, Selective, VCNT | | | | | | | | | | | | Supplement: Defibrinated Blood + Growth Factor Mixture + GC Selective Supplement, VCNT | |
| | | | | | | | | | | GCA50055-02 | GCA50090-02 | | |
| Thayer-Martin Agar, Selective, VCNT | | | | | | | | | | | | Supplement: Defibrinated Blood + Growth Factor Mixture + GC Selective Supplement, VCNT | |
| | | | | | | | | | | GCA50055-03 | GCA50090-03 | | |
| Gelatine Peptone Agar | | | | | | | | | | | | | |
| GPA20500 | GPA25000 | GPA210000 | GPA225000 | GPA250000 | GPA30100 | GPA30500 | | | | GPA50055 | GPA50090 | | |
| Giolitti-Cantoni Broth Base + TWEEN | | | | | | | | | | | | Supplement: Potassium Tellurite Solution, Sterile | |
| GCC20500 | GCC25000 | GCC210000 | GCC225000 | GCC250000 | GCC30100 | GCC30500 | | | | | | | |
| Giolitti-Cantoni Broth | | | | | | | | | | | | Supplement: Potassium Tellurite Solution, Sterile | |
| | | | | | | | | | | GCB40010 | | | |
| Glutamate Broth Base, Modified | | | | | | | | | | | | | |
| MMG20500 | MMG25000 | MMG210000 | MMG225000 | MMG250000 | | | | | | | | | |
| Glutamate Broth, Modified | | | | | | | | | | | | Supplement: Ammonium Chloride and Sodium Glutamate | |
| | | | | | | MMG30100 | MMG30500 | | | | | | |
| Glutamate Broth, Modified + Durham Tube | | | | | | | | | | | | Supplement: Ammonium Chloride and Sodium Glutamate | |
| | | | | | | | | | | MMG40010 | | | |
| GN Broth | | | | | | | | | | | | | |
| GNB20500 | GNB25000 | GNB210000 | GNB225000 | GNB250000 | GNB30100 | GNB30500 | | | | GNB40010 | | | |
| GSP Agar Base | | | | | | | | | | | | | |
| GSP20500 | GSP25000 | GSP210000 | GSP225000 | GSP250000 | GSP30100 | GSP30500 | | | | | | | |
| GSP Agar | | | | | | | | | | | | Supplement: GSP Selective Supplement | |
| | | | | | | | | | | GSP50055 | GSP50090 | | |
| Haemophilus Agar- From Active Coal Agar Base | | | | | | | | | | | | Supplement: Growth Factor Mixture | |
| | | | | | | | | | | | CHA50090-HA | | |
| Haemophilus Test Agar Base | | | | | | | | | | | | | |
| HTM20500 | HTM25000 | HTM210000 | HTM225000 | HTM250000 | HTM30100 | HTM30500 | | | | | | | |
| Haemophilus Test Agar | | | | | | | | | | | | Supplement: Haemophilus Supplement | |
| | | | | | | | | | | HTM50055 | HTM50090 | | |
| Hektoen Enteric Agar | | | | | | | | | | | | | |
| HEA20500 | HEA25000 | HEA210000 | HEA225000 | HEA250000 | HEA30100 | HEA30500 | | | | HEA50055 | HEA50090 | | |

* In case of tubes the last figures of code numbers indicate volumes (ml) of media, minimum order is 50 pieces from the same type.

** In case of plates the minimum order is 10 pieces (90 mm) or 20 pieces (55 mm).

| NAME | | | | | | | | | | | |
|-------|---------|----------|----------|----------|--------|--------|--------------------|--------------------|--------------------|------------------|------------------|
| 500 g | 5 000 g | 10 000 g | 25 000 g | 50 000 g | 100 ml | 500 ml | tube* 100x12 mm | tube* 100x15 mm | tube* 150x15 mm | plate** 55 mm | plate** 90 mm |

| NAME | | | | | | | | | | | |
|---|------------|-------------|-------------|-------------|------------|------------|--------------------|--------------------|--------------------|------------------|------------------|
| 500 g | 5 000 g | 10 000 g | 25 000 g | 50 000 g | 100 ml | 500 ml | tube* 100x12 mm | tube* 100x15 mm | tube* 150x15 mm | plate** 55 mm | plate** 90 mm |
| Hugh-Leifson OF Medium Base | | | | | | | | | | | |
| SUG20500 | SUG25000 | SUG210000 | SUG225000 | SUG250000 | SUG30100 | SUG30500 | | | | | |
| Hugh-Leifson OF Glucose Medium, ISO | | | | | | | | | | | |
| SUI20500 | SUI25000 | SUI21000 | SUI225000 | SUI250000 | SUI30100 | SUI30500 | | | | | |
| Hugh-Leifson OF Medium with sugars (see the list of sugars on page 27) | | | | | | | | | | | |
| SUG20500-? | SUG25000-? | SUG210000-? | SUG225000-? | SUG250000-? | SUG30100-? | SUG30500-? | SUG40004-? | | | | |
| Indole Motility Ornithine (IMO) Medium | | | | | | | | | | | |
| IMO20500 | IMO25000 | IMO210000 | IMO225000 | IMO250000 | IMO30100 | IMO30500 | IMO40002 | | | | |
| Iron Sulphite Agar | | | | | | | | | | | |
| ISA20500 | ISA25000 | ISA210000 | ISA225000 | ISA250000 | ISA30100 | ISA30500 | | ISA40010 | | | |
| K Agar Base | | | | | | | | | | | |
| KSA20500 | KSA25000 | KSA210000 | KSA225000 | KSA250000 | | | | | | | |
| K Agar Base Supplement: TWEEN 80 Supplement. To be added: K Agar Malic Acid Solution | | | | | | | | | | | |
| | | | | | KSA30100 | KSA30500 | | | | | |
| K Agar Supplement: TWEEN 80 Supplement + K Agar Malic Acid Solution | | | | | | | | | | | |
| | | | | | | | | | KSA50055 | KSA50090 | |
| Kanamycin Esculin Azide Agar | | | | | | | | | | | |
| KEA20500 | KEA25000 | KEA210000 | KEA225000 | KEA250000 | KEA30100 | KEA30500 | | | | KEA50055 | KEA50090 |
| Kanamycin Esculin Azide Broth | | | | | | | | | | | |
| KEB20500 | KEB25000 | KEB210000 | KEB225000 | KEB250000 | KEB30100 | KEB30500 | | | KEB40010 | | |
| KF Streptococcus Agar Base | | | | | | | | | | | |
| KFA20500 | KFA25000 | KFA210000 | KFA225000 | KFA250000 | KFA30100 | KFA30500 | | | | | |
| KF Streptococcus Agar Supplement: KF TTC Solution, Sterile | | | | | | | | | | | |
| | | | | | | | | | KFA50055 | KFA50090 | |
| Kimmig Agar Base | | | | | | | | | | | |
| KIM20500 | KIM25000 | KIM210000 | KIM225000 | KIM250000 | | | | | | | |
| Kimmig Agar Supplement: Glycerol Supplement | | | | | | | | | | | |
| | | | | | KIM30100 | KIM30500 | | | KIM40005 | KIM50055 | KIM50090 |
| King A Agar Base, USP | | | | | | | | | | | |
| KA20500 | KA25000 | KA210000 | KA225000 | KA250000 | | | | | | | |
| King A Agar, USP Supplement: Glycerol Supplement | | | | | | | | | | | |
| | | | | | KA30100 | KA30500 | | | KA40005 | | |
| King B Agar, USP (agar base+ King B supplement) KIT | | | | | | | | | | | |
| KAB20500 | KAB25000 | KAB210000 | KAB225000 | KAB250000 | | | | | | | |
| King B Agar, USP Supplement: Glycerol Supplement | | | | | | | | | | | |
| | | | | | KAB30100 | KAB30500 | | | KAB40005 | | |
| Kligler Iron Agar | | | | | | | | | | | |
| KIA20500 | KIA25000 | KIA210000 | KIA225000 | KIA250000 | KIA30100 | KIA30500 | KIA40003 | | | | |
| Klimmer Agar | | | | | | | | | | | |
| KLA20500 | KLA25000 | KLA210000 | KLA225000 | KLA250000 | KLA30100 | KLA30500 | | | KLA50055 | KLA50090 | |
| Koser Citrate Broth | | | | | | | | | | | |
| KSB20500 | KSB25000 | KSB210000 | KSB225000 | KSB250000 | KSB30100 | KSB30500 | KSB40003 | | | | |

* In case of tubes the last figures of code numbers indicate volumes (ml) of media, minimum order is 50 pieces from the same type.

** In case of plates the minimum order is 10 pieces (90 mm) or 20 pieces (55 mm).

| NAME | | | | | | | | | | | |
|-------|---------|----------|----------|----------|--------|--------|--------------------|--------------------|--------------------|------------------|------------------|
| 500 g | 5 000 g | 10 000 g | 25 000 g | 50 000 g | 100 ml | 500 ml | tube* 100x12 mm | tube* 100x15 mm | tube* 150x15 mm | plate** 55 mm | plate** 90 mm |

| NAME | | | | | | | | | | | |
|---|----------|-----------|-----------|-----------|----------|----------|--------------------|--------------------|--------------------|------------------|------------------|
| 500 g | 5 000 g | 10 000 g | 25 000 g | 50 000 g | 100 ml | 500 ml | tube* 100x12 mm | tube* 100x15 mm | tube* 150x15 mm | plate** 55 mm | plate** 90 mm |
| Lactose Broth, PH EUR | | | | | | | | | | | |
| LAB20500 | LAB25000 | LAB210000 | LAB225000 | LAB250000 | LAB30100 | LAB30500 | | | | | |
| Lactose Broth, PH EUR + Durham Tube | | | | | | | | | | | |
| | | | | | | | | | | LAB40010 | |
| Lactose Peptone Broth, DEV | | | | | | | | | | | |
| LPB20500 | LPB25000 | LPB210000 | LPB225000 | LPB250000 | LPB30100 | LPB30500 | | | | | |
| Lactose Peptone Broth, DEV + Durham Tube | | | | | | | | | | | |
| | | | | | | | | | | LPB40010 | |
| Lactose (1%) Phenol Red Broth | | | | | | | | | | | |
| LFB20500 | LFB25000 | LFB210000 | LFB225000 | LFB250000 | LFB30100 | LFB30500 | | | | | |
| Lactose (1%) Phenol Red Broth + Durham Tube | | | | | | | | | | | |
| | | | | | | | | | | LFB40010 | |
| Lactose Sulphite Broth Base, PH EUR | | | | | | | | | | | |
| LSU20500 | LSU25000 | LSU210000 | LSU225000 | LSU250000 | LSU30100 | LSU30500 | | | | | |
| Lactose Gelatine Medium | | | | | | | | | | | |
| LGM20500 | LGM25000 | LGM210000 | LGM225000 | LGM30100 | LGM30500 | | | | | LGM40010 | |
| Lactose Sulphite Broth, PH EUR + Durham Tube Supplement: Sodium Metabisulphite Solution, Sterile + Ferric Ammonium Citrate Solution, Sterile | | | | | | | | | | | |
| | | | | | | | | | | LSU40010 | |
| Lauryl Sulphate Broth | | | | | | | | | | | |
| LSB20500 | LSB25000 | LSB210000 | LSB225000 | LSB250000 | LSB30100 | LSB30500 | | | | | |
| Lauryl Sulphate Broth + Durham Tube | | | | | | | | | | | |
| | | | | | | | | | | LSB40010 | |
| Lauryl Tryptose Mannitol Broth | | | | | | | | | | | |
| LTM20500 | LTM25000 | LTM210000 | LTM225000 | LTM250000 | LTM30100 | LTM30500 | | | | | |
| Lauryl Tryptose Mannitol Broth + Durham Tube | | | | | | | | | | | |
| | | | | | | | | | | LTM40010 | |
| Legionella (CYE) Agar Base | | | | | | | | | | | |
| CYE20500 | CYE25000 | CYE210000 | CYE225000 | CYE250000 | CYE30100 | CYE30500 | | | | | |
| Legionella BCYE Agar with Cysteine Supplement: Legionella BCYE Growth Factor Mixture with Cysteine | | | | | | | | | | | |
| | | | | | | | | | | CYE50055-01 | CYE50090-01 |
| Legionella BCYE Agar without Cysteine Supplement: Legionella BCYE Growth Factor Mixture without Cysteine | | | | | | | | | | | |
| | | | | | | | | | | CYE50055-02 | CYE50090-02 |
| Legionella BCYE Agar, BMPA Supplement: Legionella BCYE Growth Factor Mixture with Cysteine + Legionella Selective Supplement, BMPA | | | | | | | | | | | |
| | | | | | | | | | | CYE50055-03 | CYE50090-03 |
| Legionella BCYE Agar, MWY Supplement: Legionella BCYE Growth Factor Mixture with Cysteine + Legionella Selective Supplement, MWY | | | | | | | | | | | |
| | | | | | | | | | | CYE50055-04 | CYE50090-04 |
| Legionella BCYE Agar, GVPC Supplement: Legionella BCYE Growth Factor Mixture with Cysteine + Legionella Selective Supplement, GVPC | | | | | | | | | | | |
| | | | | | | | | | | CYE50055-05 | CYE50090-05 |
| Lethen Agar Base | | | | | | | | | | | |
| LTA20500 | LTA25000 | LTA210000 | LTA225000 | LTA250000 | | | | | | | |
| Lethen Agar Supplement: TWEEN 80 Supplement | | | | | | | | | | | |
| | | | | | LTA30100 | LTA30500 | | | | LTA50055 | LTA50090 |

| NAME | | | | | | | | | | | |
|-------|---------|----------|----------|----------|--------|--------|--------------------|--------------------|--------------------|------------------|------------------|
| 500 g | 5 000 g | 10 000 g | 25 000 g | 50 000 g | 100 ml | 500 ml | tube* 100x12 mm | tube* 100x15 mm | tube* 150x15 mm | plate** 55 mm | plate** 90 mm |

| | | | | | | | | | | | |
|--|-------------|--------------|--------------|--------------|-------------|-------------|--|--|--|----------------------|----------|
| Letheen Broth Base | | | | | | | | | | | |
| LTB20500 | LTB25000 | LTB210000 | LTB225000 | LTB250000 | | | | | | | |
| Letheen Broth | | | | | | | | | | | |
| Supplement: TWEEN 80 Supplement | | | | | | | | | | | |
| | | | | | LTB30100 | LTB30500 | | | | LTB40010 | |
| Leuconostoc Agar | | | | | | | | | | | |
| LEA20500 | LEA25000 | LEA210000 | LEA225000 | LEA250000 | LEA30100 | LEA30500 | | | | LEA50055 | LEA50090 |
| Linden-Grain Broth | | | | | | | | | | | |
| LGB20500 | LGB25000 | LGB210000 | LGB225000 | LGB250000 | LGB30100 | LGB30500 | | | | | |
| Listeria Enrichment Broth | | | | | | | | | | | |
| LEN20500 | LEN25000 | LEN210000 | LEN225000 | LEN250000 | LEN30100 | LEN30500 | | | | LEN40010 | |
| Listeria Enrichment Broth, Buffered | | | | | | | | | | | |
| LEB20500 | LEB25000 | LEB210000 | LEB225000 | LEB250000 | LEB30100 | LEB30500 | | | | LEB40010 | |
| Listeria Enrichment Broth Base, UVM - Fraser | | | | | | | | | | | |
| LEF20500 | LEF25000 | LEF210000 | LEF225000 | LEF250000 | LEF30100 | LEF30500 | | | | | |
| Listeria Enrichment Broth, Half Fraser | | | | | | | | | | | |
| Supplement: Listeria Selective Supplement, Half Fraser | | | | | | | | | | | |
| | | | | | | | | | | LEF40010-HF | |
| Listeria Enrichment Broth, Fraser | | | | | | | | | | | |
| Supplement: Listeria Selective Supplement, Fraser | | | | | | | | | | | |
| | | | | | | | | | | LEF40010-TF | |
| Listeria Enrichment Broth, UVM I | | | | | | | | | | | |
| Supplement: Listeria Selective Supplement, UVM I | | | | | | | | | | | |
| LEF20500-U1 | LEF25000-U1 | LEF210000-U1 | LEF225000-U1 | LEF250000-U1 | LEF30100-U1 | LEF30500-U1 | | | | LEF40010-U1 | |
| Listeria Enrichment Broth, UVM II | | | | | | | | | | | |
| Supplement: Listeria Selective Supplement, UVM II | | | | | | | | | | | |
| LEF20500-U2 | LEF25000-U2 | LEF210000-U2 | LEF225000-U2 | LEF250000-U2 | LEF30100-U2 | LEF30500-U2 | | | | LEF40010-U2 | |
| Listeria Enrichment Broth, Fraser | | | | | | | | | | | |
| LEF20500-TF | LEF25000-TF | LEF210000-TF | LEF225000-TF | LEF250000-TF | LEF30100-TF | LEF30500-TF | | | | LEF40010-TF | |
| Listeria Enrichment Broth, Half Fraser | | | | | | | | | | | |
| LEF20500-HF | LEF25000-HF | LEF210000-HF | LEF225000-HF | LEF250000-HF | LEF30100-HF | LEF30500-HF | | | | LEF40010-HF | |
| Listeria Selective Agar Base, Oxford | | | | | | | | | | | |
| LAO20500 | LAO25000 | LAO210000 | LAO225000 | LAO250000 | LAO30100 | LAO30500 | | | | | |
| Listeria Selective Agar, Oxford | | | | | | | | | | | |
| Supplement: Listeria Selective Supplement, Oxford | | | | | | | | | | | |
| | | | | | | | | | | LAO50055 | LAO50090 |
| Listeria Selective Agar Base, Palcam | | | | | | | | | | | |
| LAP20500 | LAP25000 | LAP210000 | LAP225000 | LAP250000 | LAP30100 | LAP30500 | | | | | |
| Listeria Selective Agar, Palcam | | | | | | | | | | | |
| Supplement: Listeria Selective Supplement, Palcam | | | | | | | | | | | |
| | | | | | | | | | | LAP50055 | LAP50090 |
| Litmus Milk Broth | | | | | | | | | | | |
| LBT20500 | LBT25000 | | | | LBT30100 | LBT30500 | | | | LBT40010 LBT40008 | |
| Liver Broth | | | | | | | | | | | |
| LVB20500 | LVB25000 | LVB210000 | LVB225000 | LVB250000 | LVB30100 | LVB30500 | | | | LVB40010 | |
| Loeffler Medium Base | | | | | | | | | | | |
| Supplement: Sterile Inactivated Horse Serum | | | | | | | | | | | |
| LOE20500 | LOE25000 | LOE210000 | LOE225000 | LOE250000 | | | | | | | |
| Loeffler Medium | | | | | | | | | | | |
| | | | | | | | | | | LOE40003 | LOE40005 |

* In case of tubes the last figures of code numbers indicate volumes (ml) of media, minimum order is 50 pieces from the same type.

** In case of plates the minimum order is 10 pieces (90 mm) or 20 pieces (55 mm).

| NAME | | | | | | | | | | | |
|-------|---------|----------|----------|----------|--------|--------|--------------------|--------------------|--------------------|------------------|------------------|
| 500 g | 5 000 g | 10 000 g | 25 000 g | 50 000 g | 100 ml | 500 ml | tube* 100x12 mm | tube* 100x15 mm | tube* 150x15 mm | plate** 55 mm | plate** 90 mm |

| | | | | | | | | | | | |
|--|----------|-----------|-----------|-----------|----------|----------|----------|----------|--|----------------|----------|
| Lowenstein-Jensen Medium Base | | | | | | | | | | | |
| LJM20500 | LJM25000 | LJM210000 | LJM225000 | LJM250000 | | | | | | | |
| Lowenstein-Jensen medium w/o MG w/o G w/o P | | | | | | | | | | | |
| | | | | | | | | | | LJM40006-AO-01 | |
| Lowenstein-Jensen medium + MG w/o G w/o P | | | | | | | | | | | |
| | | | | | | | | | | LJM40006-AO-02 | |
| Lowenstein-Jensen medium + MG + G w/o P | | | | | | | | | | | |
| | | | | | | | | | | LJM40006-AO-03 | |
| Lowenstein-Jensen medium + MG w/o G + P | | | | | | | | | | | |
| | | | | | | | | | | LJM40006-AO-04 | |
| Lowenstein-Jensen medium + MG + G + P | | | | | | | | | | | |
| | | | | | | | | | | LJM40006-AO-05 | |
| Luria Agar | | | | | | | | | | | |
| LBA20500 | LBA25000 | LBA210000 | LBA225000 | LBA250000 | LBA30100 | LBA30500 | | | | LBA50055 | LBA50090 |
| Luria-Bertani Broth | | | | | | | | | | | |
| LBB20500 | LBB25000 | LBB210000 | LBB225000 | LBB250000 | LBB30100 | LBB30500 | | | | LBB40010 | |
| Lysine Decarboxylase Broth | | | | | | | | | | | |
| See: Culture Media for Amino Acid Decomposition Studies on page 27 | | | | | | | | | | | |
| Lysine Iron (LIA) Agar | | | | | | | | | | | |
| LIA20500 | LIA25000 | LIA210000 | LIA225000 | LIA250000 | LIA30100 | LIA30500 | LIA40003 | | | | |
| M 17 Agar | | | | | | | | | | | |
| M1A20500 | M1A25000 | M1A210000 | M1A225000 | M1A250000 | M1A30100 | M1A30500 | | | | M1A50055 | M1A50090 |
| M 17 Broth | | | | | | | | | | | |
| M1B20500 | M1B25000 | M1B210000 | M1B225000 | M1B250000 | M1B30100 | M1B30500 | | | | M1B40010 | |
| M-FC Agar | | | | | | | | | | | |
| MFC20500 | MFC25000 | MFC210000 | MFC225000 | MFC250000 | MFC30100 | MFC30500 | | | | MFC50055 | MFC50090 |
| M-FC Broth | | | | | | | | | | | |
| MFB20500 | MFB25000 | MFB210000 | MFB225000 | MFB250000 | | | | | | | |
| M-FC Broth | | | | | | | | | | | |
| | | | | | | MFB30100 | MFB30500 | MFB40002 | | | |
| M-Green Agar | | | | | | | | | | | |
| MGA20500 | MGA25000 | MGA210000 | MGA225000 | MGA250000 | MGA30100 | MGA30500 | | | | MGA50055 | MGA50090 |
| MacConkey Agar | | | | | | | | | | | |
| MCD20500 | MCD25000 | MCD210000 | MCD225000 | MCD250000 | MCD30100 | MCD30500 | | | | MCD50055 | MCD50090 |
| M-Green Broth | | | | | | | | | | | |
| MGB20500 | MGB25000 | MGB210000 | MGB225000 | MGB250000 | MGB30100 | MGB30500 | MGB40002 | | | | |
| MacConkey Agar No.3 | | | | | | | | | | | |
| MCA20500 | MCA25000 | MCA210000 | MCA225000 | MCA250000 | MCA30100 | MCA30500 | | | | MCA50055 | MCA50090 |
| MacConkey Agar Base, Sorbitol | | | | | | | | | | | |
| MCS20500 | MCS25000 | MCS210000 | MCS225000 | MCS250000 | MCS30100 | MCS30500 | | | | | |
| MacConkey Agar, Sorbitol | | | | | | | | | | | |
| Supplement: Cefixime Tellurite Selective Supplement | | | | | | | | | | | |
| | | | | | | | | | | MCS50055 | MCS50090 |

| NAME | | | | | | | | | | | |
|-------|---------|----------|----------|----------|--------|--------|--------------------|--------------------|--------------------|------------------|------------------|
| 500 g | 5 000 g | 10 000 g | 25 000 g | 50 000 g | 100 ml | 500 ml | tube* 100x12 mm | tube* 100x15 mm | tube* 150x15 mm | plate** 55 mm | plate** 90 mm |

| | | | | | | | | | | | |
|--|----------|-----------|-----------|-----------|----------|----------|----------|--|----------|----------|----------|
| MacConkey Agar, PH EUR - USP | | | | | | | | | | | |
| MCE20500 | MCE25000 | MCE210000 | MCE225000 | MCE250000 | MCE30100 | MCE30500 | | | | MCE50055 | MCE50090 |
| MacConkey Agar without Crystal Violet | | | | | | | | | | | |
| MWC20500 | MWC25000 | MWC210000 | MWC225000 | MWC250000 | MWC30100 | MWC30500 | | | | MWC50055 | MWC50090 |
| MacConkey Agar without Salt | | | | | | | | | | | |
| MWS20500 | MWS25000 | MWS210000 | MWS225000 | MWS250000 | MWS30100 | MWS30500 | | | | MWS50055 | MWS50090 |
| MacConkey Agar without Salt and Crystal Violet | | | | | | | | | | | |
| MWD20500 | MWD25000 | MWD210000 | MWD225000 | MWD250000 | MWD30100 | MWD30500 | | | | MWD50055 | MWD50090 |
| MacConkey Broth, PH EUR - USP | | | | | | | | | | | |
| MBE20500 | MBE25000 | MBE210000 | MBE225000 | MBE250000 | MBE30100 | MBE30500 | | | | | |
| MacConkey Broth, PH EUR - USP + Durham Tube | | | | | | | | | | | |
| | | | | | | | | | MBE40010 | | |
| Malachite Green Broth Base | | | | | | | | | | | |
| MIB20500 | MIB25000 | MIB210000 | MIB225000 | MIB250000 | MIB30100 | MIB30500 | | | | | |
| Malachite Green Broth Supplement: Malachite Green Solution, Sterile | | | | | | | | | | | |
| | | | | | | | | | MIB40010 | | |
| Malonate Agar | | | | | | | | | | | |
| MAA20500 | MAA25000 | MAA210000 | MAA225000 | MAA250000 | MAA30100 | MAA30500 | MAA40002 | | | | |
| Malonate Broth | | | | | | | | | | | |
| MAD20500 | MAD25000 | MAD210000 | MAD225000 | MAD250000 | MAD30100 | MAD30500 | MAD40003 | | | | |
| Malt Extract Agar Supplement: Lactic Acid Solution (if requested) | | | | | | | | | | | |
| MEA20500 | MEA25000 | MEA210000 | MEA225000 | MEA250000 | MEA30100 | MEA30500 | | | | MEA50055 | MEA50090 |
| Malt Extract Broth Supplement: Lactic Acid Solution (if requested) | | | | | | | | | | | |
| MBR20500 | MBR25000 | MBR210000 | MBR225000 | MBR250000 | MBR30100 | MBR30500 | | | MBR40010 | | |
| Mannitol Lysine Brilliant Green Agar | | | | | | | | | | | |
| MLA20500 | MLA25000 | MLA210000 | MLA225000 | MLA250000 | MLA30100 | MLA30500 | | | | MLA50055 | MLA50090 |
| Mannitol Motility Nitrate (MMN) Medium | | | | | | | | | | | |
| MMN20500 | MMN25000 | MMN210000 | MMN225000 | MMN250000 | MMN30100 | MMN30500 | MMN40003 | | | | |
| Mannitol Salt Agar, PH EUR - USP | | | | | | | | | | | |
| MSA20500 | MSA25000 | MSA210000 | MSA225000 | MSA250000 | MSA30100 | MSA30500 | | | | MSA50055 | MSA50090 |
| Mannose Broth Supplement: TWEEN 80 Supplement | | | | | | | | | | | |
| | | | | | MNB30100 | MNB30500 | | | MNB40010 | | |
| Maximum Recovery Diluent | | | | | | | | | | | |
| MRD20500 | MRD25000 | MRD210000 | MRD225000 | MRD250000 | MRD30100 | MRD30500 | | | MRD40010 | | |
| MEA Agar | | | | | | | | | | | |
| MEC20500 | MEC25000 | MEC210000 | MEC225000 | MEC250000 | MEC30100 | MEC30500 | | | | MEC50055 | MEC50090 |
| Meat Extract Broth | | | | | | | | | | | |
| MEX20500 | MEX25000 | MEX210000 | MEX225000 | MEX250000 | MEX30100 | MEX30500 | | | MEX40010 | | |
| Membran Lauryl Sulphate (MLSb) Broth | | | | | | | | | | | |
| MLS20500 | MLS25000 | MLS210000 | MLS225000 | MLS250000 | MLS30100 | MLS30500 | MLS40002 | | | | |
| Moeller Broth Base | | | | | | | | | | | |
| DBM20500 | DBM25000 | DBM210000 | DBM225000 | DBM250000 | DBM30100 | DBM30500 | | | | | |

| NAME | | | | | | | | | | | |
|-------|---------|----------|----------|----------|--------|--------|--------------------|--------------------|--------------------|------------------|------------------|
| 500 g | 5 000 g | 10 000 g | 25 000 g | 50 000 g | 100 ml | 500 ml | tube* 100x12 mm | tube* 100x15 mm | tube* 150x15 mm | plate** 55 mm | plate** 90 mm |

| | | | | | | | | | | | |
|---|-------------|--------------|--------------|--------------|-------------|-------------|----------|--|-------------|----------|----------|
| Moeller Broth Base Covered with paraffin oil | | | | | | | | | | | |
| | | | | | | | | | DBM40002 | | |
| Moeller Broth, Arginine | | | | | | | | | | | |
| DBM20500-AR | DBM25000-AR | DBM210000-AR | DBM225000-AR | DBM250000-AR | DBM30100-AR | DBM30500-AR | | | | | |
| Moeller Broth, Arginine Covered with paraffin oil | | | | | | | | | | | |
| | | | | | | | | | DBM40002-AR | | |
| Moeller Broth, Lysine | | | | | | | | | | | |
| DBM20500-LY | DBM25000-LY | DBM210000-LY | DBM225000-LY | DBM250000-LY | DBM30100-LY | DBM30500-LY | | | | | |
| Moeller Broth, Lysine Covered with paraffin oil | | | | | | | | | | | |
| | | | | | | | | | DBM40002-LY | | |
| Moeller Broth, Ornithine | | | | | | | | | | | |
| DBM20500-OR | DBM25000-OR | DBM210000-OR | DBM225000-OR | DBM250000-OR | DBM30100-OR | DBM30500-OR | | | | | |
| Moeller Broth, Ornithine Covered with paraffin oil | | | | | | | | | | | |
| | | | | | | | | | DBM40002-OR | | |
| Motility Indole Lysine (MIL) Medium | | | | | | | | | | | |
| MIL20500 | MIL25000 | MIL210000 | MIL225000 | MIL250000 | MIL30100 | MIL30500 | MIL40003 | | | | |
| Motility Indole Urea (MIU) Medium (medium base-urea) KIT | | | | | | | | | | | |
| MIU20500 | MIU25000 | MIU210000 | MIU225000 | MIU250000 | | | | | | | |
| Motility Indole Urea (MIU) Medium Supplement: Urea | | | | | | | | | | | |
| | | | | | MIU30100 | MIU30500 | | | MIU40005 | | |
| Motility Medium | | | | | | | | | | | |
| MOA20500 | MOA25000 | MOA210000 | MOA225000 | MOA250000 | MOA30100 | MOA30500 | MOA40003 | | | | |
| Motility Nitrate (MN) Medium Base | | | | | | | | | | | |
| MON20500 | MON25000 | MON210000 | MON225000 | MON250000 | | | | | | | |
| Motility Nitrate (MN) Medium Supplement: Glycerol Supplement | | | | | | | | | | | |
| | | | | | MON30100 | MON30500 | MON40003 | | | | |
| M-PA-B Agar | | | | | | | | | | | |
| MPB20500 | MPB25000 | MPB210000 | MPB225000 | MPB250000 | MPB30100 | MPB30500 | | | | MPB50055 | MPB50090 |
| M-PA-C Agar | | | | | | | | | | | |
| MPA20500 | MPA25000 | MPA210000 | MPA225000 | MPA250000 | MPA30100 | MPA30500 | | | | MPA50055 | MPA50090 |
| MRS Agar (agar base + MRS supplement) KIT | | | | | | | | | | | |
| MRA20500 | MRA25000 | MRA210000 | MRA225000 | MRA250000 | | | | | | | |
| MRS Agar | | | | | | | | | | | |
| | | | | | MRA30100 | MRA30500 | | | | MRA50055 | MRA50090 |
| MRS Broth (broth base + MRS supplement) KIT | | | | | | | | | | | |
| MRB20500 | MRB25000 | MRB210000 | MRB225000 | MRB250000 | | | | | | | |
| MRS Broth | | | | | | | | | | | |
| | | | | | MRB30100 | MRB30500 | | | MRB40010 | | |
| MRSA Screen Agar Base | | | | | | | | | | | |
| MRS20500 | MRS25000 | MRS210000 | MRS225000 | MRS250000 | MRS30100 | MRS30500 | | | | | |
| MRSA Screen Agar Supplement: MRSA Selective Supplement | | | | | | | | | | | |
| | | | | | | | | | | | MRS50090 |

* In case of tubes the last figures of code numbers indicate volumes (ml) of media, minimum order is 50 pieces from the same type.

** In case of plates the minimum order is 10 pieces (90 mm) or 20 pieces (55 mm).

| NAME | | | | | | | | | | | |
|-------|---------|----------|----------|----------|--------|--------|--------------------|--------------------|--------------------|------------------|------------------|
| 500 g | 5 000 g | 10 000 g | 25 000 g | 50 000 g | 100 ml | 500 ml | tube* 100x12 mm | tube* 100x15 mm | tube* 150x15 mm | plate** 55 mm | plate** 90 mm |

| NAME | | | | | | | | | | | |
|---|-------------|--------------|--------------|--------------|-------------|-------------|--------------------|--------------------|--------------------|------------------|------------------|
| 500 g | 5 000 g | 10 000 g | 25 000 g | 50 000 g | 100 ml | 500 ml | tube* 100x12 mm | tube* 100x15 mm | tube* 150x15 mm | plate** 55 mm | plate** 90 mm |
| MRVP Broth | | | | | | | | | | | |
| MVP20500 | MVP25000 | MVP210000 | MVP225000 | MVP250000 | MVP30100 | MVP30500 | MVP40002 | | | | |
| Mueller-Hinton II Agar | | | | | | | | | | | |
| MHT20500 | MHT25000 | MHT210000 | MHT225000 | MHT250000 | MHT30100 | MHT30500 | | | | | MHT50090-01 |
| Mueller-Hinton II Blood Agar, EUCAST Supplement: Defibrinated Horse Blood | | | | | | | | | | | |
| | | | | | | | | | | | MHT50090-04 |
| Mueller-Hinton II Agar, Methylene Blue | | | | | | | | | | | |
| MHM20500 | MHM25000 | MHM210000 | MHM225000 | MHM250000 | MHM30100 | MHM30500 | | | | | MHM50090 |
| Mueller-Hinton Agar, Fungi | | | | | | | | | | | |
| MHF20500 | MHF25000 | MHF210000 | MHF225000 | MHF250000 | MHF30100 | MHF30500 | | | | | MHF50090 |
| Mueller-Hinton II Broth | | | | | | | | | | | |
| MHC20500 | MHC25000 | MHC210000 | MHC225000 | MHC250000 | MHC30100 | MHC30500 | | | MHC40010 | | |
| Mycoplasma (PPLO) Agar Base | | | | | | | | | | | |
| MYA20500 | MYA25000 | MYA210000 | MYA225000 | MYA250000 | MYA30100 | MYA30500 | | | | | |
| Mycoplasma (PPLO) Broth Base | | | | | | | | | | | |
| MYB20500 | MYB25000 | MYB210000 | MYB225000 | MYB250000 | MYB30100 | MYB30500 | | | | | |
| Neutralising Broth Base | | | | | | | | | | | |
| NSB20500 | NSB25000 | NSB210000 | NSB225000 | NSB250000 | | | | | | | |
| Neutralising Broth Supplement: TWEEN 80 Supplement | | | | | | | | | | | |
| | | | | | NSB30100 | NSB30500 | | | | | |
| Neutralizing Fluid Base, PH EUR | | | | | | | | | | | |
| NSE20500 | NSE25000 | NSE210000 | NSE225000 | NSE250000 | | | | | | | |
| Neutralizing Fluid, PH EUR Supplement: TWEEN 80 Supplement | | | | | | | | | | | |
| | | | | | NSE30100 | NSE30500 | | | | | |
| Nitrate Broth | | | | | | | | | | | |
| NIT205000 | NIT25000 | NIT210000 | NIT225000 | NIT250000 | NIT30100 | NIT30500 | | | | | |
| Nitrate Broth + Durham Tube | | | | | | | | | | | |
| | | | | | | | | | NIT40004 | | |
| Nutrient Agar | | | | | | | | | | | |
| NUA20500 | NUA25000 | NUA210000 | NUA225000 | NUA250000 | NUA30100 | NUA30500 | | | | NUA50055 | NUA50090 |
| Nutrient Agar, DEV | | | | | | | | | | | |
| NUD20500 | NUD25000 | NUD210000 | NUD225000 | NUD250000 | NUD30100 | NUD30500 | | | | NUD50055 | NUD50090 |
| Nutrient Agar ISO 21528 | | | | | | | | | | | |
| NUC20500 | NUC25000 | NUC210000 | NUC225000 | NUC250000 | NUC30100 | NUC30500 | | | | NUC50055 | NUC50090 |
| Nutrient Agar, ISO | | | | | | | | | | | |
| NUI20500 | NUI25000 | NUI210000 | NUI225000 | NUI250000 | NUI30100 | NUI30500 | | | | NUI50055 | NUI50090 |
| Nutrient Agar, ISO 16266 | | | | | | | | | | | |
| NUK20500 | NUK25000 | NUK210000 | NUK225000 | NUK250000 | NUK30100 | NUK30500 | | | | NUK50055 | NUK50090 |
| Nutrient Agar SEMISOLID | | | | | | | | | | | |
| NUA20500-SS | NUA25000-SS | NUA210000-SS | NUA225000-SS | NUA250000-SS | NUA30100-SS | NUA30500-SS | | | | NUA50050-SS | NUA50090-SS |
| Nutrient Broth | | | | | | | | | | | |
| NUB20500 | NUB25000 | NUB210000 | NUB225000 | NUB250000 | NUB30100 | NUB30500 | | | NUB40010 | | |

| NAME | | | | | | | | | | | |
|-------|---------|----------|----------|----------|--------|--------|--------------------|--------------------|--------------------|------------------|------------------|
| 500 g | 5 000 g | 10 000 g | 25 000 g | 50 000 g | 100 ml | 500 ml | tube* 100x12 mm | tube* 100x15 mm | tube* 150x15 mm | plate** 55 mm | plate** 90 mm |

| | | | | | | | | | | | |
|--|-------------|--------------|--------------|--------------|-------------|-------------|-------------|--|----------|-------------|----------|
| Nutrient Broth, DEV | | | | | | | | | | | |
| NBD20500 | NBD25000 | NBD210000 | NBD225000 | NBD250000 | NBD30100 | NBD30500 | | | NBD40010 | | |
| Nutrient Broth No.2 | | | | | | | | | | | |
| NUN20500 | NUN25000 | NUN210000 | NUN225000 | NUN250000 | NUN30100 | NUN30500 | | | | NUN40010 | |
| Nutrient Gelatine Medium | | | | | | | | | | | |
| GEM20500 | GEM25000 | GEM210000 | GEM225000 | GEM250000 | GEM30100 | GEM30500 | | | | | |
| Nutrient Agar SEMISOLID | | | | | | | | | | | |
| NUA20500-SS | NUA25000-SS | NUA210000-SS | NUA225000-SS | NUA250000-SS | NUA30100-SS | NUA30500-SS | NUA40003-SS | | | | |
| Nutrient Yeast Glucose (NYDA) Agar | | | | | | | | | | | |
| NYG20500 | NYG25000 | NYG210000 | NYG225000 | NYG250000 | NYG30100 | NYG30500 | | | | NYG50055 | NYG50090 |
| Orange Serum Agar (agar base + orange juice) KIT | | | | | | | | | | | |
| OSA20400 | OSA24000 | OSA210000 | OSA225000 | OSA250000 | | | | | | | |
| Orange Serum Agar | | | | | | | | | | | |
| | | | | | OSA30100 | OSA30500 | | | | OSA50055 | OSA50090 |
| Orange Serum Broth (broth base + orange juice) KIT | | | | | | | | | | | |
| OSB20500 | OSB25000 | OSB210000 | OSB225000 | OSB250000 | | | | | | | |
| Orange Serum Broth | | | | | | | | | | | |
| | | | | | OSB30100 | OSB30500 | | | | OSB40010 | |
| Oxytetracycline Glucose Yeast Extract Agar Base | | | | | | | | | | | |
| OGY20500 | OGY25000 | OGY210000 | OGY225000 | OGY250000 | OGY30100 | OGY30500 | | | | | |
| Oxytetracycline Glucose Yeast Extract Agar Supplement: OGYE Selective Supplement | | | | | | | | | | | |
| | | | | | | | | | | OGY50055 | OGY50090 |
| Önöz Agar | | | | | | | | | | | |
| ONO20500 | ONO25000 | ONO210000 | ONO225000 | ONO250000 | ONO30100 | ONO30500 | | | | ONO50055 | ONO50090 |
| Parisian Mannitol Medium | | | | | | | | | | | |
| PAM20500 | PAM25000 | PAM210000 | PAM225000 | PAM250000 | PAM30100 | PAM30500 | | | | | |
| PBS Buffer | | | | | | | | | | | |
| PBS20500 | PBS25000 | PBS210000 | PBS225000 | PBS250000 | PBS30100 | PBS30500 | | | | | |
| Peptone Water Base | | | | | | | | | | | |
| PEW20500 | PEW25000 | PEW210000 | PEW225000 | PEW250000 | PEW30100 | PEW30500 | | | | | |
| Peptone Water + Andrade Base | | | | | | | | | | | |
| PEW20500-00 | PEW25000-00 | PEW210000-00 | PEW225000-00 | PEW250000-00 | PEW30100-00 | PEW30500-00 | | | | | |
| Peptone Water + Andrade with sugars (see the list of sugars on page 27) | | | | | | | | | | | |
| PEW20500-? | PEW25000-? | PEW210000-? | PEW225000-? | PEW250000-? | PEW30100-? | PEW30500-? | | | | | |
| Peptone Water + BCP Base | | | | | | | | | | | |
| PAW20500-00 | PAW25000-00 | PAW210000-00 | PAW225000-00 | PAW250000-00 | PAW30100-00 | PAW30500-00 | | | | | |
| Peptone Water with Bromocresol Purple with sugars (see the list of sugars on page 27) | | | | | | | | | | | |
| PAW20500-? | PAW25000-? | PAW210000-? | PAW225000-? | PAW250000-? | PAW30100-? | PAW30500-? | PAW40002-? | | | | |
| Peptone Water, Alkaline | | | | | | | | | | | |
| PEW20500-22 | PEW25000-22 | PEW210000-22 | PEW225000-22 | PEW250000-22 | PEW30100-22 | PEW30500-22 | | | | PEW40010-22 | |
| Peptone Water, Buffered | | | | | | | | | | | |
| PWB20500 | PWB25000 | PWB210000 | PWB225000 | PWB250000 | PWB30100 | PWB30500 | | | | PWB40010 | |

* In case of tubes the last figures of code numbers indicate volumes (ml) of media, minimum order is 50 pieces from the same type.

** In case of plates the minimum order is 10 pieces (90 mm) or 20 pieces (55 mm).

| NAME | | | | | | | | | | | |
|-------|---------|----------|----------|----------|--------|--------|--------------------|--------------------|--------------------|------------------|------------------|
| 500 g | 5 000 g | 10 000 g | 25 000 g | 50 000 g | 100 ml | 500 ml | tube* 100x12 mm | tube* 100x15 mm | tube* 150x15 mm | plate** 55 mm | plate** 90 mm |

| | | | | | | | | | | | |
|---|----------|-----------|-----------|-----------|----------|----------|----------|--|-------------|-------------|--|
| Peptone Water, Buffered, PH EUR - USP | | | | | | | | | | | |
| PBE20500 | PBE25000 | PBE210000 | PBE225000 | PBE250000 | PBE30100 | PBE30500 | | | PBE40010 | | |
| Peptone Water, Double Buffered | | | | | | | | | | | |
| PWD20500 | PWD25000 | PWD210000 | PWD225000 | PWD250000 | PWD30100 | PWD30500 | | | PWD40010 | | |
| Perfringens (OPSP) Agar Base | | | | | | | | | | | |
| POB20500 | POB25000 | POB210000 | POB225000 | POB250000 | POB30100 | POB30500 | | | | | |
| OPSP Agar Supplement: Perfringens Selective Supplement, OPSP, A+B | | | | | | | | | | | |
| | | | | | | | | | POB50055 | POB50090 | |
| Perfringens (TSC + SFP) Agar Base | | | | | | | | | | | |
| PAB20500 | PAB25000 | PAB210000 | PAB225000 | PAB250000 | PAB30100 | PAB30500 | | | | | |
| TSC Agar Supplement: Perfringens Selective Supplement, TSC + Sterile Egg Yolk Emulsion | | | | | | | | | | | |
| | | | | | | | | | PAB50055-01 | PAB50090-01 | |
| TSC Agar, Egg Yolk Free Supplement: Perfringens Selective Supplement, TSC | | | | | | | | | | | |
| | | | | | | | | | PAB50055-02 | PAB50090-02 | |
| SFP Agar Supplement: Perfringens Selective Supplement, SFP + Sterile Egg Yolk Emulsion | | | | | | | | | | | |
| | | | | | | | | | PAB50055-03 | PAB50090-03 | |
| SFP Agar, Egg Yolk Free Supplement: Perfringens Selective Supplement, SFP | | | | | | | | | | | |
| | | | | | | | | | PAB50055-04 | PAB50090-04 | |
| Phenol Red Agar Base | | | | | | | | | | | |
| PHA20500 | PHA25000 | PHA210000 | PHA225000 | PHA250000 | PHA30100 | PHA30500 | | | | | |
| Phenol Red Agar Base with sugars (see the list of sugars on page 27) | | | | | | | | | | | |
| | | | | | | | | | PHA40003-? | | |
| Phenol Red Broth Base | | | | | | | | | | | |
| PHB20500 | PHB25000 | PHB210000 | PHB225000 | PHB250000 | PHB30100 | PHB30500 | | | | | |
| Phenol Red Broth with sugars (see the list of sugars on page 27) | | | | | | | | | | | |
| | | | | | | | | | PHB40003-? | | |
| Phenylalanine Agar | | | | | | | | | | | |
| PNA20500 | PNA25000 | PNA210000 | PNA225000 | PNA250000 | PNA30100 | PNA30500 | PNA40002 | | | | |
| Phenylalanine Rhamnose (FARH) Agar | | | | | | | | | | | |
| PRH20500 | PRH25000 | PRH210000 | PRH225000 | PRH250000 | PRH30100 | PRH30500 | PRH40003 | | | | |
| Phenylethyl Alcohol (PEA) Agar (agar base+supplement) KIT | | | | | | | | | | | |
| PED20500 | PED25000 | PED210000 | PED225000 | PED250000 | | | | | | | |
| Phenylethyl Alcohol (PEA) Blood Agar Supplement: Phenylethanol Supplement + Defibrinated Blood | | | | | | | | | | | |
| | | | | | PED30100 | PED30500 | | | PED50055 | PED50090 | |
| Pike Broth | | | | | | | | | | | |
| PBB20500 | PBB25000 | PBB210000 | PBB225000 | PBB250000 | PBB30100 | PBB30500 | | | PBB40010 | | |
| Plate Count Agar | | | | | | | | | | | |
| PCA20500 | PCA25000 | PCA210000 | PCA225000 | PCA250000 | PCA30100 | PCA30500 | | | PCA50055 | PCA50090 | |
| Plate Count Agar, ISO 6222 | | | | | | | | | | | |
| PCW20500 | PCW25000 | PCW210000 | PCW225000 | PCW250000 | PCW30100 | PCW30500 | | | PCW50055 | PCW50090 | |
| Plate Count Skim Milk Agar | | | | | | | | | | | |
| PCS20500 | PCS25000 | PCS210000 | PCS225000 | PCS250000 | PCS30100 | PCS30500 | | | PCS50055 | PCS50090 | |

| NAME | | | | | | | | | | | |
|-------|---------|----------|----------|----------|--------|--------|--------------------|--------------------|--------------------|------------------|------------------|
| 500 g | 5 000 g | 10 000 g | 25 000 g | 50 000 g | 100 ml | 500 ml | tube* 100x12 mm | tube* 100x15 mm | tube* 150x15 mm | plate** 55 mm | plate** 90 mm |

| | | | | | | | | | | | |
|---|----------|-----------|-----------|-----------|----------|----------|--|--|----------|-------------|----------|
| Plate Count Broth | | | | | | | | | | | |
| PCB20500 | PCB25000 | PCB210000 | PCB225000 | PCB250000 | PCB30100 | PCB30500 | | | PCB40010 | | |
| Potato Dextrose Agar, PH EUR - USP | | | | | | | | | | | |
| PDA20500 | PDA25000 | PDA210000 | PDA225000 | PDA250000 | PDA30100 | PDA30500 | | | | PDA50055 | PDA50090 |
| Potato Dextrose Broth | | | | | | | | | | | |
| PDB20500 | PDB25000 | PDB210000 | PDB225000 | PDB250000 | PDB30100 | PDB30500 | | | PDB40010 | | |
| Pseudomonas Isolation Agar Base | | | | | | | | | | | |
| PIA20500 | PIA25000 | PIA210000 | PIA225000 | PIA250000 | | | | | | | |
| Pseudomonas Isolation Agar Supplement: Glycerol Supplement | | | | | | | | | | | |
| | | | | | PIA30100 | PIA30500 | | | | PIA50055 | PIA50090 |
| Purple Lactose Agar Base, Modified | | | | | | | | | | | |
| BLA20500 | BLA25000 | BLA210000 | BLA225000 | BLA250000 | BLA30100 | BLA30500 | | | | | |
| Purple Lactose Agar, Modified Supplement: Defibrinated Blood | | | | | | | | | | | |
| | | | | | | | | | | BLA50055 | BLA50090 |
| R2A Agar, PH EUR | | | | | | | | | | | |
| R2A20500 | R2A25000 | R2A210000 | R2A225000 | R2A250000 | R2A30100 | R2A30500 | | | | R2A50055 | R2A50090 |
| R2A Broth | | | | | | | | | | | |
| R2B20500 | R2B25000 | R2B210000 | R2B225000 | R2B250000 | R2B30100 | R2B30500 | | | R2B40010 | | |
| Rappaport-Vassiliadis Broth, PH EUR - USP (broth base + Rappaport-Vassiliadis Mg-chloride solution) KIT | | | | | | | | | | | |
| RVB20500 | RVB25000 | RVB210000 | RVB225000 | RVB250000 | | | | | | | |
| Rappaport-Vassiliadis Broth, PH EUR - USP | | | | | | | | | | | |
| | | | | | RVB30100 | RVB30500 | | | | RVB40010 | |
| Rappaport-Vassiliadis (MSRV) Medium (medium base + DIADALM-MSRV Mg-chloride solution) KIT | | | | | | | | | | | |
| MSR20500 | MSR25000 | MSR210000 | MSR225000 | MSR250000 | | | | | | | |
| Rappaport-Vassiliadis (MSRV) Medium To be added: Novobiocin (10 mg) Supplement | | | | | | | | | | | |
| | | | | | MSR30100 | MSR30500 | | | | | |
| Reinforced Clostridial (RCM) Agar | | | | | | | | | | | |
| RCA20500 | RCA25000 | RCA210000 | RCA225000 | RCA250000 | RCA30100 | RCA30500 | | | | | |
| Reinforced Clostridial (RCM-DRCM) Medium Base, PH EUR - USP Supplement: Sodium Metabisulphite Solution, Sterile + Ferric Ammonium Citrate Solution, Sterile (if requested) | | | | | | | | | | | |
| RCM20500 | RCM25000 | RCM210000 | RCM225000 | RCM250000 | RCM30100 | RCM30500 | | | | | |
| RCM Medium | | | | | | | | | | | |
| | | | | | | | | | | RCM40010-01 | |
| Reinforced Clostridial Differential Broth | | | | | | | | | | | |
| RCD20500 | RCD25000 | RCD210000 | RCD225000 | RCD250000 | RCD30100 | RCD30500 | | | | | |
| Ringer Solution, 1/4 Strength | | | | | | | | | | | |
| RIS20500 | RIS25000 | RIS210000 | RIS225000 | RIS250000 | RIS30100 | RIS30500 | | | | | |
| Rogosa Agar (agar base + Rogosa saline) KIT | | | | | | | | | | | |
| ROA20500 | ROA25000 | ROA210000 | ROA225000 | ROA250000 | | | | | | | |
| Rogosa Agar Supplement: Glacial Acetic Acid (if requested) | | | | | | | | | | | |
| | | | | | ROA30100 | ROA30500 | | | | ROA50055 | ROA50090 |

* In case of tubes the last figures of code numbers indicate volumes (ml) of media, minimum order is 50 pieces from the same type.

** In case of plates the minimum order is 10 pieces (90 mm) or 20 pieces (55 mm).

| NAME | | | | | | | | | | | |
|-------|---------|----------|----------|----------|--------|--------|--------------------|--------------------|--------------------|------------------|------------------|
| 500 g | 5 000 g | 10 000 g | 25 000 g | 50 000 g | 100 ml | 500 ml | tube* 100x12 mm | tube* 100x15 mm | tube* 150x15 mm | plate** 55 mm | plate** 90 mm |

| Rose Bengal Chloramphenicol Agar | | | | | | | | | | | |
|--|----------|-----------|-----------|-----------|----------|----------|----------|----------|--|-------------|-------------|
| RBA20500 | RBA25000 | RBA210000 | RBA225000 | RBA250000 | RBA30100 | RBA30500 | | | | RBA50055 | RBA50090 |
| Rose Bengal Dichloran Agar | | | | | | | | | | | |
| RBD20500 | RBD25000 | RBD210000 | RBD225000 | RBD250000 | RBD30100 | RBD30500 | | | | RBD50055 | RBD50090 |
| RPMI MOPS Agar Base | | | | | | | | | | | |
| RGM20500 | RGM25000 | RGM210000 | RGM225000 | RGM250000 | RGM30100 | RGM30500 | | | | | |
| RPMI MOPS Agar Supplement: RPMI MOPS Solution, Sterile | | | | | | | | | | | |
| | | | | | | | | | | RGM50055 | RGM50090 |
| Russel Agar | | | | | | | | | | | |
| RUS20500 | RUS25000 | RUS210000 | RUS225000 | RUS250000 | RUS30100 | RUS30500 | RUS40003 | | | | |
| Sabouraud Dextrose (1%) Maltose (1%) Agar | | | | | | | | | | | |
| SDM20500 | SDM25000 | SDM210000 | SDM225000 | SDM250000 | SDM30100 | SDM30500 | | | | SDM50055 | SDM50090 |
| Sabouraud Dextrose (2%) Agar | | | | | | | | | | | |
| SDD20500 | SDD25000 | SDD210000 | SDD225000 | SDD250000 | SDD30100 | SDD30500 | | | | SDD50055 | SDD50090 |
| Sabouraud Dextrose (4%) Agar, PH EUR – USP | | | | | | | | | | | |
| SDA20500 | SDA25000 | SDA210000 | SDA225000 | SDA250000 | SDA30100 | SDA30500 | | | | SDA50055 | SDA50090 |
| Sabouraud Maltose (4%) Agar | | | | | | | | | | | |
| SMA20500 | SMA25000 | SMA210000 | SMA225000 | SMA250000 | SMA30100 | SMA30500 | | | | SMA50055 | SMA50090 |
| Sabouraud Chloramphenicol Agar | | | | | | | | | | | |
| SCH20500 | SCH25000 | SCH210000 | SCH225000 | SCH250000 | SCH30100 | SCH30500 | | SCH40005 | | SCH50055 | SCH50090 |
| Sabouraud Chloramphenicol Agar, PH EUR | | | | | | | | | | | |
| SCE20500 | SCE25000 | SCE210000 | SCE225000 | SCE250000 | SCE30100 | SCE30500 | | SCE40005 | | SCE50055 | SCE50090 |
| Sabouraud Chloramphenicol Actidion Agar | | | | | | | | | | | |
| SCA20500 | SCA25000 | SCA210000 | SCA225000 | SCA250000 | SCA30100 | SCA30500 | | SCA40005 | | SCA50055 | SCA50090 |
| Sabouraud Chloramphenicol Gentamicin Agar | | | | | | | | | | | |
| SCG20500 | SCG25000 | SCG210000 | SCG225000 | SCG250000 | SCG30100 | SCG30500 | | SCG40005 | | SCG50055 | SCG50090 |
| Sabouraud Chloramphenicol Gentamicin Tetrazolium Agar | | | | | | | | | | | |
| STG20500 | STG25000 | STG210000 | STG225000 | STG250000 | STG30100 | STG30500 | | STG40005 | | STG50055 | STG50090 |
| Sabouraud (4%) Chloremphenicol Gentamicin Agar | | | | | | | | | | | |
| SDG20500 | SDG25000 | SDG210000 | SDG225000 | SDG250000 | SDG30100 | SDG30500 | SDG40005 | | | SDG50055 | SDG50090 |
| Sabouraud Dextrose Broth, PH EUR – USP | | | | | | | | | | | |
| SDB20500 | SDB25000 | SDB210000 | SDB225000 | SDB250000 | SDB30100 | SDB30500 | | SDB40010 | | | |
| Sabouraud Chloramphenicol Broth | | | | | | | | | | | |
| SCC20500 | SCC25000 | SCC210000 | SCC225000 | SCC250000 | SCC30100 | SCC30500 | | SCC40010 | | | |
| Salmonella Shigella (SS) Agar | | | | | | | | | | | |
| SSA20500 | SSA25000 | SSA210000 | SSA225000 | SSA250000 | SSA30100 | SSA30500 | | | | SSA50055 | SSA50090 |
| Salt (7%) Agar | | | | | | | | | | | |
| | | | | | SAN30100 | SAN30500 | | | | SAN50055-01 | SAN50090-01 |
| Salt Agar, with Blood Supplement: Defibrinated Blood | | | | | | | | | | | |
| | | | | | | | | | | SAN50055-02 | SAN50090-02 |
| Salt Broth | | | | | | | | | | | |
| SBR20500 | SBR25000 | SBR210000 | SBR225000 | SBR250000 | SBR30100 | SBR30500 | SBR40003 | | | | |

* In case of tubes the last figures of code numbers indicate volumes (ml) of media, minimum order is 50 pieces from the same type.

** In case of plates the minimum order is 10 pieces (90 mm) or 20 pieces (55 mm).

| NAME | | | | | | | | | | | |
|-------|---------|----------|----------|----------|--------|--------|--------------------|--------------------|--------------------|------------------|------------------|
| 500 g | 5 000 g | 10 000 g | 25 000 g | 50 000 g | 100 ml | 500 ml | tube* 100x12 mm | tube* 100x15 mm | tube* 150x15 mm | plate** 55 mm | plate** 90 mm |

| Schaedler Agar | | | | | | | | | | | |
|--|----------|------------|-----------|-----------|-----------|----------|----------|--|----------|------------|-------------|
| SAA20500 | SAA25000 | SAA210000 | SAA225000 | SAA250000 | SAA30100 | SAA30500 | | | | SAA5055-04 | SAA50090-04 |
| Schaedler Blood Agar Supplement: Defibrinated Blood | | | | | | | | | | | |
| | | | | | | | | | | SAA50055 | SAA50090 |
| Schaedler Broth | | | | | | | | | | | |
| SAB20500 | SAB25000 | SAB210000 | SAB225000 | SAB250000 | SAB30100 | SAB30500 | | | SAB40010 | | |
| Selenite Broth (broth base+ selenite supplement) KIT | | | | | | | | | | | |
| SEB20500 | SEB25000 | SEB210000 | SEB225000 | SEB250000 | | | | | | | |
| Selenite Broth | | | | | | | | | | | |
| | | | | | SEB30100 | SEB30500 | | | SEB40010 | | |
| Selenite Cystine Broth, USP (broth base + selenite supplement) KIT | | | | | | | | | | | |
| SCB20500 | SCB25000 | SCB210000 | SCB225000 | SCB250000 | | | | | | | |
| Selenite Cystine Broth, USP | | | | | | | | | | | |
| | | | | | SCB30100 | SCB30500 | | | SCB40010 | | |
| Selenite Cystine Mannitol Broth (broth base + selenite supplement) KIT | | | | | | | | | | | |
| SCM20500 | SCM25000 | SCM210000 | SCM225000 | SCM250000 | | | | | | | |
| Selenite Cystine Mannitol Broth | | | | | | | | | | | |
| | | | | | SCM30100 | SCM30500 | | | SCM40010 | | |
| Shigella Broth Base | | | | | | | | | | | |
| SHB20500 | SHB25000 | SHB210000 | SHB225000 | SHB250000 | SHB30100 | SHB30500 | | | | | |
| Shigella Broth Supplement: Shigella Selective Supplement | | | | | | | | | | | |
| | | | | | | | | | SHB40010 | | |
| SIM Medium | | | | | | | | | | | |
| SIM20500 | SIM25000 | SIM210000 | SIM225000 | SIM250000 | SIM30100 | SIM30500 | SIM40003 | | | | |
| Simmons Citrate Agar | | | | | | | | | | | |
| CIT20500 | CIT25000 | CIT210000 | CIT225000 | CIT250000 | CIT30100 | CIT30500 | CIT40002 | | | | |
| Slanetz-Bartley Agar Base | | | | | | | | | | | |
| SLA20500 | SLA25000 | SLA210000 | SLA225000 | SLA250000 | SLA30100 | SLA30500 | | | | | |
| Slanetz-Bartley Agar Supplement: TTC Solution, Sterile | | | | | | | | | | | |
| | | | | | | | | | | SLA50055 | SLA50090 |
| SPS Agar | | | | | | | | | | | |
| SPS20500 | SPS25000 | SPS210000 | SPS225000 | SPS250000 | SPS30100 | SPS30500 | | | | SPS50055 | SPS50090 |
| Staphylococcus Agar No.110 | | | | | | | | | | | |
| STM20500 | STM25000 | STM210000 | STM225000 | STM250000 | STM30100 | STM30500 | | | | STM50055 | STM50090 |
| Strain Agar | | | | | | | | | | | |
| | | | | | | | | | STA40003 | | |
| Sugar Free Agar | | | | | | | | | | | |
| SFA20500 | SFA25000 | SFA210000 | SFA225000 | SFA250000 | SFA30100 | SFA30500 | | | | SFA50055 | SFA50090 |
| Sven-Gard Medium | | | | | | | | | | | |
| SGM20500 | SGM25000 | SGM 210000 | SGM225000 | SGM250000 | SGM30100 | SGM30500 | | | | | |
| TAT Broth Base, USP | | | | | | | | | | | |
| TAT20500 | TAT25000 | TAT210000 | TAT225000 | TAT250000 | TAT 30100 | TAT30500 | | | | | |

| NAME | | | | | | | | | | | |
|-------|---------|----------|----------|----------|--------|--------|--------------------|--------------------|--------------------|------------------|------------------|
| 500 g | 5 000 g | 10 000 g | 25 000 g | 50 000 g | 100 ml | 500 ml | tube* 100x12 mm | tube* 100x15 mm | tube* 150x15 mm | plate** 55 mm | plate** 90 mm |

| Taylor Broth Base | | | | | | | | | | | |
|--|-------------|--------------|--------------|--------------|-------------|-------------|-------------|--|--|----------|----------|
| DBT20500 | DBT25000 | DBT210000 | DBT225000 | DBT250000 | DBT30100 | DBT30500 | DBT40002 | | | | |
| Taylor Broth, Arginine | | | | | | | | | | | |
| DBT20500-AR | DBT25000-AR | DBT210000-AR | DBT225000-AR | DBT250000-AR | DBT30100-AR | DBT30500-AR | DBT40002-AR | | | | |
| Taylor Broth, Lysine | | | | | | | | | | | |
| DBT20500-LY | DBT25000-LY | DBT210000-LY | DBT225000-LY | DBT250000-LY | DBT30100-LY | DBT30500-LY | DBT40002-LY | | | | |
| Taylor Broth, Ornithine | | | | | | | | | | | |
| DBT20500-OR | DBT25000-OR | DBT210000-OR | DBT225000-OR | DBT250000-OR | DBT30100-OR | DBT30500-OR | DBT40002-OR | | | | |
| TCBS Agar | | | | | | | | | | | |
| TCB20500 | TCB25000 | TCB210000 | TCB225000 | TCB250000 | TCB30100 | TCB30500 | | | | TCB50055 | TCB50090 |
| Tergitol 7 Agar Base | | | | | | | | | | | |
| TEA20500 | TEA25000 | TEA210000 | TEA225000 | TEA250000 | TEA30100 | TEA30500 | | | | | |
| Tergitol 7 Agar Supplement: TTC Solution, Sterile | | | | | | | | | | | |
| | | | | | | | | | | TEA50055 | TEA50090 |
| Terrific Broth | | | | | | | | | | | |
| TER20500 | TER25000 | TER210000 | TER225000 | TER250000 | TER30100 | TER30500 | | | | | |
| Test Agar, pH 6.0 | | | | | | | | | | | |
| T6020500 | T6025000 | T60210000 | T60225000 | T60250000 | T6030100 | T6030500 | | | | | |
| Test Agar, pH 7.2 | | | | | | | | | | | |
| T7220500 | T7225000 | T72210000 | T72225000 | T72250000 | T7230100 | T7230500 | | | | | |
| Test Agar, pH 8.0 | | | | | | | | | | | |
| T8020500 | T8025000 | T80210000 | T80225000 | T80250000 | T8030100 | T8030500 | | | | | |
| Tetrathionate Broth Base, Muller-Kauffmann To be added: Tetrathionate Iodine-Iodide Sel. Sup. + Brilliant Green Solution, Sterile | | | | | | | | | | | |
| MTB20500 | MTB25000 | MTB210000 | MTB225000 | MTB250000 | MTB30100 | MTB30500 | | | | MTB40010 | |
| Tetrathionate Broth Base, Muller-Kauffmann (MKTn) To be added: Novobiocin (20 mg) Sup. + Tetrathionate Iodine-Iodide Sel. Sup. + Brilliant Green Solution, Sterile | | | | | | | | | | | |
| TMK20500 | TMK25000 | TMK210000 | TMK225000 | TMK250000 | TMK30100 | TMK30500 | | | | TMK40010 | |
| Tetrathionate Broth Base, Preuss | | | | | | | | | | | |
| TTP20500 | TTP25000 | TTP210000 | TTP225000 | TTP250000 | TTP30100 | TTP30500 | | | | TTP40010 | |
| Tetrathionate Broth Base, PH EUR To be added: Tetrathionate Iodine-Iodide Sel. Sup. | | | | | | | | | | | |
| TTE20500 | TTE25000 | TTE210000 | TTE225000 | TTE250000 | TTE30100 | TTE30500 | | | | TTE40010 | |
| Tetrathionate Broth Base, USP To be added: Tetrathionate Iodine-Iodide Sel. Sup. | | | | | | | | | | | |
| TTB20500 | TTB25000 | TTB210000 | TTB225000 | TTB250000 | TTB30100 | TTB30500 | | | | TTB40010 | |
| Thioglycollate Medium, Brewer | | | | | | | | | | | |
| TBR20500 | TBR25000 | TBR210000 | TBR225000 | TBR250000 | TBR30100 | TBR30500 | | | | TBR40010 | |
| Thioglycollate Medium G | | | | | | | | | | | |
| THG20500 | THG25000 | THG210000 | THG225000 | THG250000 | THG30100 | THG30500 | | | | THG40010 | |
| Thioglycollate Medium, PH EUR | | | | | | | | | | | |
| THM20500 | THM25000 | THM210000 | THM225000 | THM250000 | THM30100 | THM30500 | | | | THM40010 | |
| Thioglycollate Medium with Hemin + Vitamin K3 | | | | | | | | | | | |
| THK20500 | THK25000 | THK210000 | THK225000 | THK250000 | THK30100 | THK30500 | | | | THK40010 | |

* In case of tubes the last figures of code numbers indicate volumes (ml) of media, minimum order is 50 pieces from the same type.

** In case of plates the minimum order is 10 pieces (90 mm) or 20 pieces (55 mm).

| NAME | | | | | | | | | | | |
|-------|---------|----------|----------|----------|--------|--------|--------------------|--------------------|--------------------|------------------|------------------|
| 500 g | 5 000 g | 10 000 g | 25 000 g | 50 000 g | 100 ml | 500 ml | tube* 100x12 mm | tube* 100x15 mm | tube* 150x15 mm | plate** 55 mm | plate** 90 mm |

| Todd-Hewitt Broth | | | | | | | | | | | |
|--|----------|-----------|-----------|-----------|----------|----------|----------|--|--|-------------|----------|
| THB20500 | THB25000 | THB210000 | THB225000 | THB250000 | THB30100 | THB30500 | | | | THB40010 | |
| Todd-Hewitt Broth, Selective Supplement: Todd-Hewitt Selective Supplement | | | | | | | | | | | |
| | | | | | | | | | | THB40010-02 | |
| Tomato Extract Agar | | | | | | | | | | | |
| TJA20500 | TJA25000 | TJA210000 | TJA225000 | TJA250000 | TJA30100 | TJA30500 | | | | TJA50055 | TJA50090 |
| Transport Medium, Amies with Charcoal | | | | | | | | | | | |
| TAC20500 | TAC25000 | TAC210000 | TAC225000 | TAC250000 | TAC30100 | TAC30500 | | | | | |
| Transport Medium, Amies without Charcoal | | | | | | | | | | | |
| TAW20500 | TAW25000 | TAW210000 | TAW225000 | TAW250000 | TAW30100 | TAW30500 | | | | | |
| Transport Medium, Cary-Blair | | | | | | | | | | | |
| TCW20500 | TCW25000 | TCW210000 | TCW225000 | TCW250000 | TCW30100 | TCW30500 | | | | | |
| Transport Medium, Stuart with Charcoal | | | | | | | | | | | |
| TSC20500 | TSC25000 | TSC210000 | TSC225000 | TSC250000 | TSC30100 | TSC30500 | | | | | |
| Transport Medium, Stuart without Charcoal | | | | | | | | | | | |
| TSW20500 | TSW25000 | TSW210000 | TSW225000 | TSW250000 | TSW30100 | TSW30500 | | | | | |
| Tributyryn Agar Base | | | | | | | | | | | |
| TRA20500 | TRA25000 | TRA210000 | TRA225000 | TRA250000 | | | | | | | |
| Tributyryn Agar Supplement: Tributyrin Supplement | | | | | | | | | | | |
| | | | | | TRA30100 | TRA30500 | | | | TRA50055 | TRA50090 |
| Trichomonas (CPLM) Medium Base, Modified | | | | | | | | | | | |
| CPL20500 | CPL25000 | CPL210000 | CPL225000 | CPL250000 | CPL30100 | CPL30500 | | | | | |
| Trichomonas (CPLM) Medium, Modified Supplement: Trichomonas Selective Supplement + Inactivated Horse Serum | | | | | | | | | | | |
| | | | | | | | | | | CPL40010 | |
| Trichomonas Medium Base | | | | | | | | | | | |
| TRM20500 | TRM25000 | TRM210000 | TRM225000 | TRM250000 | TRM30100 | TRM30500 | | | | | |
| Trichomonas Medium Supplement: Trichomonas Selective Supplement + Inactivated Horse Serum | | | | | | | | | | | |
| | | | | | | | | | | TRM40010 | |
| Triple Sugar Iron (TSI) Agar, PH EUR | | | | | | | | | | | |
| TSI20500 | TSI25000 | TSI210000 | TSI225000 | TSI250000 | TSI30100 | TSI30500 | TSI40003 | | | | |
| Tryptone Bile Agar | | | | | | | | | | | |
| TBA20500 | TBA25000 | TBA210000 | TBA225000 | TBA250000 | TBA30100 | TBA30500 | | | | TBA50055 | TBA50090 |
| Tryptone Soya Agar, PH EUR - USP | | | | | | | | | | | |
| TSA20500 | TSA25000 | TSA210000 | TSA225000 | TSA250000 | TSA30100 | TSA30500 | | | | TSA50055 | TSA50090 |
| Tryptone Soya Bile (mTSB) Broth | | | | | | | | | | | |
| TBB20500 | TBB25000 | TBB210000 | TBB225000 | TBB250000 | TBB30100 | TBB30500 | | | | TBB40010 | |
| Tryptone Soya Bile (mTSB+n) Broth with Novobiocin | | | | | | | | | | | |
| TBN20500 | TBN25000 | TBN210000 | TBN225000 | TBN250000 | TBN30100 | TBN30500 | | | | TBN40010 | |
| Tryptone Soya Broth, PH EUR - USP | | | | | | | | | | | |
| TSB20500 | TSB25000 | TSB210000 | TSB225000 | TSB250000 | TSB30100 | TSB30500 | | | | TSB40010 | |
| Tryptone Soya Yeast Extract Agar | | | | | | | | | | | |
| TYA20500 | TYA25000 | TYA210000 | TYA225000 | TYA250000 | TYA30100 | TYA30500 | | | | TYA50055 | TYA50090 |

| NAME | | | | | | | | | | | |
|-------|---------|----------|----------|----------|--------|--------|--------------------|--------------------|--------------------|------------------|------------------|
| 500 g | 5 000 g | 10 000 g | 25 000 g | 50 000 g | 100 ml | 500 ml | tube* 100x12 mm | tube* 100x15 mm | tube* 150x15 mm | plate** 55 mm | plate** 90 mm |

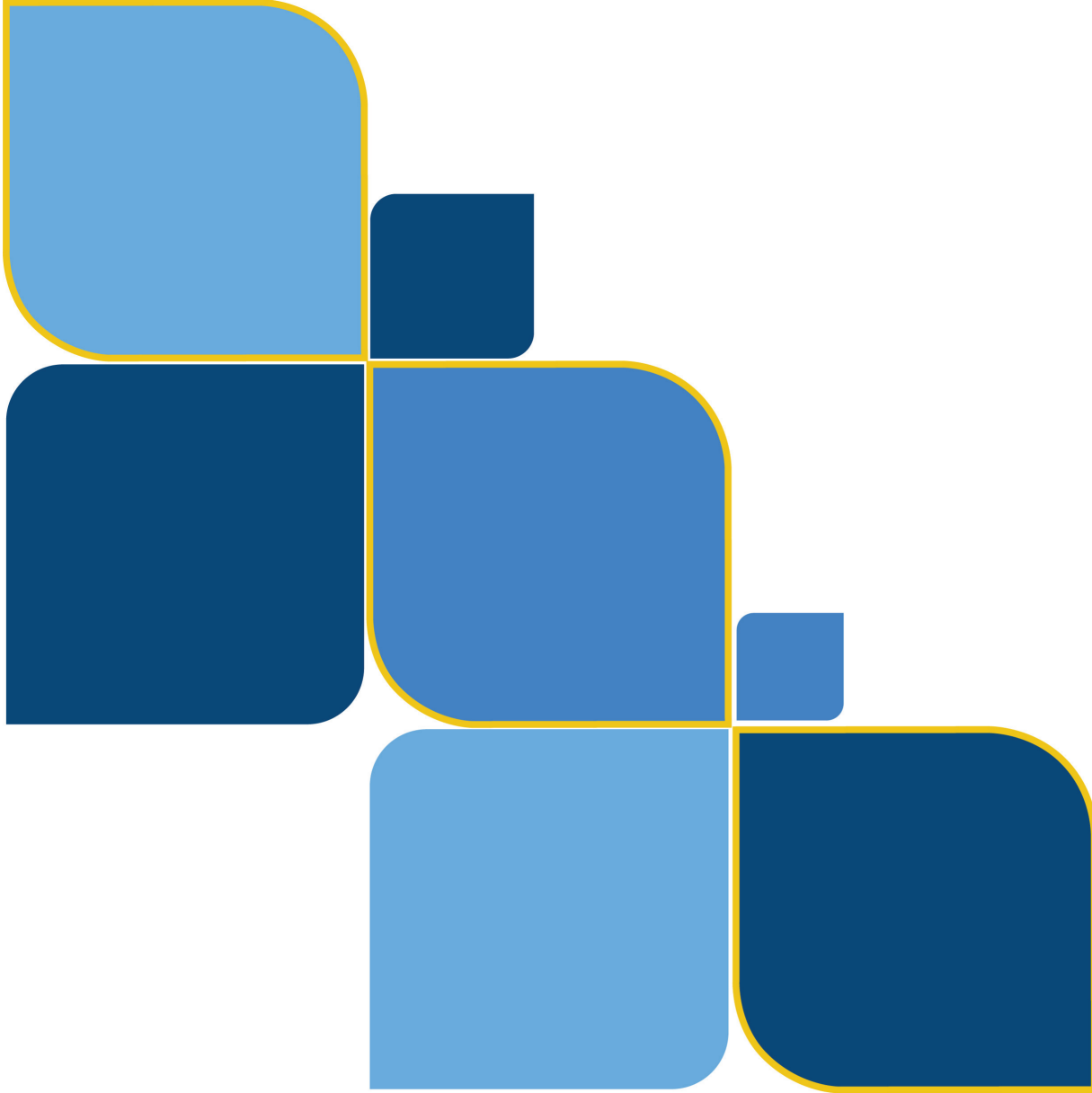
| Tryptone Soya Yeast Extract Broth | | | | | | | | | | | |
|--|----------|-----------|-----------|-----------|----------|----------|----------|--|----------|----------|--|
| YTB20500 | YTB25000 | YTB210000 | YTB225000 | YTB250000 | YTB30100 | YTB30500 | | | YTB40010 | | |
| Tryptone Water | | | | | | | | | | | |
| TRW20500 | TRW25000 | TRW210000 | TRW225000 | TRW250000 | TRW30100 | TRW30500 | TRW40003 | | | | |
| Tryptophan Broth | | | | | | | | | | | |
| TRB20500 | TRB25000 | TRB210000 | TRB225000 | TRB250000 | TRB30100 | TRB30500 | TRB40003 | | | | |
| Tryptose Phosphate Broth | | | | | | | | | | | |
| TPB20500 | TPB25000 | TPB210000 | TPB225000 | TPB250000 | TPB30100 | TPB30500 | | | TPB40010 | | |
| TSN Agar | | | | | | | | | | | |
| TSN20500 | TSN25000 | TSN210000 | TSN225000 | TSN250000 | TSN30100 | TSN30500 | | | TSN50055 | TSN50090 | |
| Universal Beer Agar | | | | | | | | | | | |
| UBA20500 | UBA25000 | UBA210000 | UBA225000 | UBA250000 | | | | | | | |
| Urea Agar (agar base + carbamide) KIT | | | | | | | | | | | |
| URD20500 | URD25000 | URD210000 | URD225000 | URD250000 | | | | | | | |
| Urea Agar | | | | | | | | | | | |
| | | | | | URD30100 | URD30500 | | | URD40005 | | |
| Urea Broth (broth base + carbamide) KIT | | | | | | | | | | | |
| URE20500 | URE25000 | URE210000 | URE225000 | URE250000 | | | | | | | |
| Urea Broth | | | | | | | | | | | |
| | | | | | URE30100 | URE30500 | | | URE40005 | | |
| Urea Indole Broth (broth base + carbamide) KIT | | | | | | | | | | | |
| URI20500 | URI25000 | URI210000 | URI225000 | URI250000 | | | | | | | |
| Urea Indole Broth | | | | | | | | | | | |
| | | | | | URI30100 | URI30500 | URI40002 | | | | |
| Violet Red Bile Glucose Agar, PH EUR | | | | | | | | | | | |
| VBE20500 | VBE25000 | VBE210000 | VBE225000 | VBE250000 | VBE30100 | VBE30500 | | | VBE50055 | VBE50090 | |
| Violet Red Bile Glucose Agar, PH EUR - USP | | | | | | | | | | | |
| VBH20500 | VBH25000 | VBH210000 | VBH225000 | VBH250000 | VBH30100 | VBH30500 | | | VBH50055 | VBH50090 | |
| Violet Red Bile Lactose Agar | | | | | | | | | | | |
| VBL20500 | VBL25000 | VBL210000 | VBL225000 | VBL250000 | VBL30100 | VBL30500 | | | VBL50055 | VBL50090 | |
| Violet Red Bile Lactose Agar, Buffered | | | | | | | | | | | |
| VBB20500 | VBB25000 | VBB210000 | VBB225000 | VBB250000 | VBB30100 | VBB30500 | | | VBB50055 | VBB50090 | |
| Vogel-Johnson Agar Base, USP | | | | | | | | | | | |
| VJA20500 | VJA25000 | VJA210000 | VJA225000 | VJA250000 | VJA30100 | VJA30500 | | | | | |
| Vogel-Johnson Agar, USP | | | | | | | | | | | |
| | | | | | | | | | VJA50055 | VJA50090 | |
| Wilkins-Chalgren Agar | | | | | | | | | | | |
| WCA20500 | WCA25000 | WCA210000 | WCA225000 | WCA250000 | WCA30100 | WCA30500 | | | | | |
| Wilkins-Chalgren Blood Agar | | | | | | | | | | | |
| | | | | | | | | | WCA50055 | WCA50090 | |
| Wilkins-Chalgren Broth | | | | | | | | | | | |
| WCB20500 | WCB25000 | WCB210000 | WCB225000 | WCB250000 | WCB30100 | WCB30500 | | | WCB40010 | | |

* In case of tubes the last figures of code numbers indicate volumes (ml) of media, minimum order is 50 pieces from the same type.

** In case of plates the minimum order is 10 pieces (90 mm) or 20 pieces (55 mm).

| NAME | | | | | | | | | | | |
|-------|---------|----------|----------|----------|--------|--------|--------------------|--------------------|--------------------|------------------|------------------|
| 500 g | 5 000 g | 10 000 g | 25 000 g | 50 000 g | 100 ml | 500 ml | tube* 100x12 mm | tube* 100x15 mm | tube* 150x15 mm | plate** 55 mm | plate** 90 mm |

| Willis-Hobbs Agar Base | | | | | | | | | | | |
|---|----------|-----------|-----------|-----------|----------|----------|--|--|----------|----------|----------|
| WHA20500 | WHA25000 | WHA210000 | WHA225000 | WHA250000 | WHA30100 | WHA30500 | | | | | |
| Supplement: Willis-Hobbs Milk Solution, Sterile; Sterile Egg Yolk Emulsion; Willis-Hobbs Selective Supplement | | | | | | | | | | | |
| | | | | | | | | | | WHA50055 | WHA50090 |
| Wilson Agar Base | | | | | | | | | | | |
| WAB20500 | WAB25000 | WAB210000 | WAB225000 | WAB250000 | WAB30100 | WAB30500 | | | | WAB50055 | WAB50090 |
| WL Differential Agar | | | | | | | | | | | |
| WLD20500 | WLD25000 | WLD210000 | WLD225000 | WLD250000 | WLD30100 | WLD30500 | | | | WLD50055 | WLD50090 |
| WL Differential Broth | | | | | | | | | | | |
| WDB20500 | WDB25000 | WDB210000 | WDB225000 | WDB250000 | WDB30100 | WDB30500 | | | WDB40010 | | |
| WL Nutrient Agar | | | | | | | | | | | |
| WLN20500 | WLN25000 | WLN210000 | WLN225000 | WLN250000 | WLN30100 | WLN30500 | | | | WLN50055 | WLN50090 |
| WL Nutrient Broth | | | | | | | | | | | |
| WLB20500 | WLB25000 | WLB210000 | WLB225000 | WLB250000 | WLB30100 | WLB30500 | | | WLB40010 | | |
| Wort Agar Base | | | | | | | | | | | |
| WOA20500 | WOA25000 | WOA210000 | WOA225000 | WOA250000 | | | | | | | |
| Wort Agar | | | | | | | | | | | |
| | | | | | | | | | WOA30100 | WOA30500 | |
| Supplement: Glycerol Supplement | | | | | | | | | | | |
| | | | | | | | | | | WOA50055 | WOA50090 |
| Wort Broth Base | | | | | | | | | | | |
| WOB20500 | WOB25000 | WOB210000 | WOB225000 | WOB250000 | | | | | | | |
| Wort Broth | | | | | | | | | | | |
| | | | | | | | | | WOB30100 | WOB30500 | |
| | | | | | | | | | | WOB40010 | |
| XLD Agar, ISO | | | | | | | | | | | |
| XLI20500 | XLI25000 | XLI210000 | XLI225000 | XLI250000 | XLI30100 | XLI30500 | | | | | |
| XLD Agar, PH EUR - USP | | | | | | | | | | | |
| XLD20500 | XLD25000 | XLD210000 | XLD225000 | XLD250000 | XLD30100 | XLD30500 | | | | XLD50055 | XLD50090 |
| Yeast Extract Agar | | | | | | | | | | | |
| YEA20500 | YEA25000 | YEA210000 | YEA225000 | YEA250000 | YEA30100 | YEA30500 | | | | YEA50055 | YEA50090 |
| Yeast Malt Agar | | | | | | | | | | | |
| YMA20500 | YMA25000 | YMA210000 | YMA225000 | YMA250000 | YMA30100 | YMA30500 | | | | YMA50055 | YMA50090 |
| Yeast Malt Broth | | | | | | | | | | | |
| YMB20500 | YMB25000 | YMB210000 | YMB225000 | YMB250000 | YMB30100 | YMB30500 | | | YMB40010 | | |
| Yersinia Agar Base | | | | | | | | | | | |
| YAB20500 | YAB25000 | YAB210000 | YAB225000 | YAB50000 | YAB30100 | YAB30500 | | | | | |
| Yersinia Agar | | | | | | | | | | | |
| | | | | | | | | | | | |
| | | | | | | | | | | YAB50055 | YAB50090 |
| Supplement: Yersinia (CIN) Selective Supplement | | | | | | | | | | | |
| | | | | | | | | | | | |
| Yersinia Broth Base | | | | | | | | | | | |
| YBB20500 | YBB25000 | YBB210000 | YBB225000 | YBB50000 | YBB30100 | YBB30500 | | | | | |
| Yersinia Broth | | | | | | | | | | | |
| | | | | | | | | | | YBB40010 | |
| Supplement: Yersinia (CIN) Selective Supplement | | | | | | | | | | | |
| | | | | | | | | | | | |



biolab
FOR SPLENDID ISOLATION

Biolab Inc.

H-1141 Budapest, Öv u. 43. Hungary

Phone: (+36 1) 221 96 14 **Fax:** (+36 1) 364 20 06

www.biolab.hu E-mail: export@biolab.hu